

-Committee Meeting 1- Middle School Rezoning Study

October 11, 2018

CropperGIS

Welcome and Introductions

Who We Are

Cropper GIS Consulting, LLC

K-12 school planning is our business and our passion. Our specialty is school realignment.

Cropper works with K-12 school districts to:

- develop redistricting plans,
- facilitate community engagement,
- research, map and write demographic studies,
- prepare long-range facility master plans,
- author site feasibility studies,
- conduct & publish housing impact and yield factor studies, and
- provide GIS implementation & training.

Who We Are

Cropper GIS is an ESRI Authorized Business Partner



Recent Projects:

- Richmond Public Schools, VA
- Henrico County Public Schools, VA
- Alexandria City Public Schools, VA
- Union County Public Schools, NC
- Brunswick County Public Schools, NC
- Frederick County Public Schools, MD
- Baltimore County Public Schools, MD
- Alexandria City Public Schools, VA
- Meridian Public School District, MS
- Kershaw County School District, SC
- Calhoun County Public Schools, SC
- Akron Public Schools, OH



Matthew Cropper

- 20 years experience providing GIS mapping and analysis services to school districts and other clients.
- Manages and Facilitates K-12 redistricting and facility planning projects across the U.S.
- Expert consultant for U.S. Department of Justice, Civil Right's Division
- Published numerous papers about using GIS in master planning and educational planning.

Why We're Here

1. Frederick County Public Schools (FCPS) have an imbalance in middle school utilization:
 - a) James Wood Middle School is overcrowded.
 - b) Frederick County Middle School has available capacity.
 - c) Admiral Byrd Middle School is also overcrowded, but it is expected to get relief when R. E. Aylor Middle School is rebuilt, and subsequent rezoning occurs.
 - d) The expectation is that this rezoning will only impact middle schools, with no impact on elementary or high school boundary lines.
2. These factors necessitate a comprehensive look at attendance boundaries.

Project Objectives

1. To explore and develop middle school rezoning options through a community-based process.
2. Focus on developing options that best meet the FCPS rezoning criteria.

Why We're Here

Middle School Rezoning Study

Cropper GIS Consulting were hired by the district to facilitate and manage the project. Our firms are tasked to:

- A. Develop supporting materials to help facilitate the study.
- B. Facilitate a community-based process of developing a middle school rezoning plan.
- C. Empower the community throughout the process.
- D. Leverage expertise to develop logical, efficient, and effective student realignment options with the committee.

Why We're Here

Rezoning Criteria

Rules to Follow

The Frederick County Public Schools has a set of criteria to follow when evaluating middle school rezoning options. These are rules to follow when considering any potential attendance zone adjustment.

The rezoning committee will be oriented on these criteria and will follow them as best as possible as they consider rezoning options.

- **Balance building utilization.**
 - Schools should be at similar percentages of capacity when the next middle school is planned to be opened. Allow for increasing attendance in high growth areas. Keep future capital projects in mind.
 - Building utilization does not include the use of portable or semi-permanent spaces in the total building capacity.
 - Avoid additional rezonings before the next middle school opens.
 - Economic, cultural, and ethnic diversity should be considered to ensure schools are inclusionary and not adversely affected by realignment decisions.
 - Special needs populations should be evenly distributed across all schools in a manner consistent with sound educational practices.

- **Minimize impact on students.**
 - Minimize the number of students impacted by a boundary adjustment.
 - Students should be assigned to the school closest to their homes when possible.
 - Establish a clean feeder pattern system; reduce the number of schools at the next level any single school feeds. When splits are necessary, the attendance zone should be divided in a balanced manner, so that students continue to the next level with their peers. Eliminate existing splits and/or improve split balance.
 - Minimize the number of times any single child must be moved by rezonings.
- **Minimize impact on communities.**
 - Keep all students from each neighborhood/community together at the same school.
 - Minimize the division of clearly identifiable community components (i.e. villages, settled areas, etc.)

- **Maximize student transportation efficiency.**

- Account for school bus routes when determining a boundary adjustment.
- Minimize travel times and costs. Students should be assigned to the school closest to their homes when possible.



- Use major roads and natural boundaries when feasible to define attendance zones. Minimize the number of students crossing major intersections and other barriers to maximize their safety and security. Contain bus routes within natural boundaries to avoid traffic delays and late arrivals.
- Make all effort to establish contiguous attendance zones. Avoid creating satellite zones, which are not connected to the primary attendance zone. Attempt to eliminate existing satellite zones.

Review of Timeline

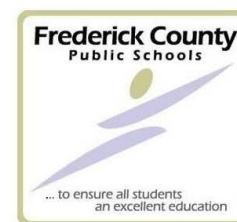
Process & Timeline for Rezoning Study					
	Sept. '18	Oct. '18	Nov. '18	Dec. '18	Jan. '19
<i>Redistricting Criteria / Guideline Development</i>					
Rezoning Study					
<i>Data Collection</i>					
<i>Data Analysis / Assimilation</i>					
<i>Internal Logistics Planning with district</i>					
<i>Background Report Development</i>					
<i>Baseline Options Development</i>					
<i>Public Information Session #1: Present Project Process, Criteria, Timeline, and Realignment Objectives to Community. Information meeting to public, without public comments.</i>		10/10			
<u><i>Committee Meeting 1</i></u> <i>- Orientation, Review Background Data, Introduce Baseline Options</i>		10/11			
<u><i>Committee Meeting 2</i></u> <i>- Options Development</i>		10/24			
<u><i>Committee Meeting 3</i></u> <i>- Options Development, Prepare for Public Information Session #2</i>			11/14		
<i>Public Information Session #2: Present Preliminary Realignment Options to Community for Comment/Feedback</i>			11/28		
<u><i>Committee Meeting 4</i></u> <i>- Review public input, modify options</i>				12/12	
<u><i>Committee Meeting 5</i></u> <i>- Finalize Recommendations & Prepare for Board Presentation</i>					1/8
<i>Presentation of Final Recommendations to the Board of Education</i>					1/15

We are here

Background Report

Each committee member will be provided with a background report. The report expands the extensive knowledge each committee and public member already has about Frederick County.

The background report helps committee members share a message with the community that is consistent and accurate.



**Frederick County Public Schools, VA
Rezoning Study**

Background Report

Online Map

- An online map has been developed to further inform the committee and public on the work of the committee.
- Current zones and options can be viewed on the map.
- Other features can be turned on/off on the map, including planning blocks.
- Map is customizable, and can/will be updated during the process to show new options along with other information requested by the committee.
- Site can be viewed on any device, including mobile devices and tablets (with internet connection).
- Site address is:

www.croppermap.com/fcpsva

Communication Logistics

Communication Logistics

Personal Information and Email

- Committee member names will be made public. No personal information of members will be released.
- Any emails that a particular committee member wants to send to the whole committee can be sent to Cropper, and they will make sure the rest of the group receives it.
- All emails will be copied to FCPS.



*All communications
are public record.*

Questions

- Direct questions you are unable to answer to either FCPS or Cropper.
- **Middle School Rezoning process website!:**
 - Helps to refer inquiring community to this website to answer questions about the school rezoning process, schedule and a quantity of data and maps.
 - www.fcpsvarezoning.com
 - An online feedback form is on this page where any member of the public can provide ongoing input.
- Remember to refer to your Background Report.

Contact Info:

Cropper GIS

Matthew Cropper

mcropper@croppergis.com

614.451.1242

Frederick County Schools Contact:

Wayne Lee

leew@fcpsk12.net

540.662.3889 ext. 88249

Members of the public, please use the online
comment form for general comments.

Communication Logistics

Members of the public have the opportunity to participate in the process in many ways:

- All materials shared with the committee will be made available on the Middle School Rezoning Study webpage, located at www.fcpsvare zoning.com
- The rezoning web-page contains a feedback form that allows the public to provide any feedback regarding the process at any time. This information will be shared with the committee, and will be made public.
- The Public Input Session on November 28th is designed to share with the public the DRAFT options that are under consideration, and to solicit feedback on the options from you. At this meeting, we will be presenting the options and allowing you to review large maps and discuss your thoughts with the committee and/or consultants.

Review of DRAFT Options

Remember that everything is considered
DRAFT!

- Nothing is written in stone
- Existing DRAFT options are subject to change
- New options can/will be created

*Focus isn't on picking the best solution YET, but to
openly explore the various options to present to the
public for feedback*

Review of DRAFT Options

DRAFT options are presented to you this evening

- Committee has 8.5x11 maps, as well as plots of maps for review
- Option maps are now available on interactive map (www.croppermap.com/fcpsva)
- Copies of the handouts, including small and large format maps are now posted on the FCPS Rezoning webpage.

Review of DRAFT Options

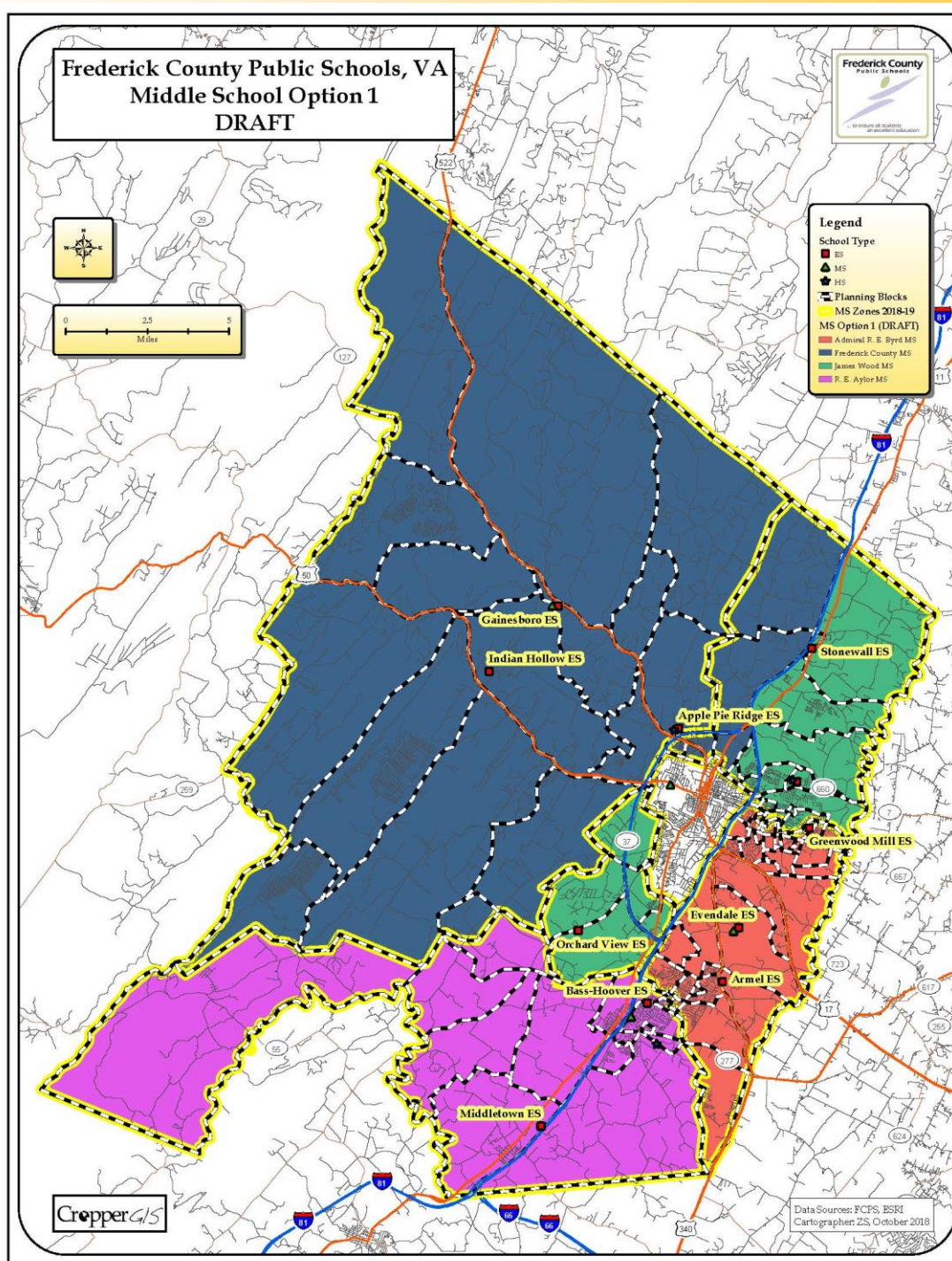
When analyzing boundary options, it is best to look at the information in two different ways:

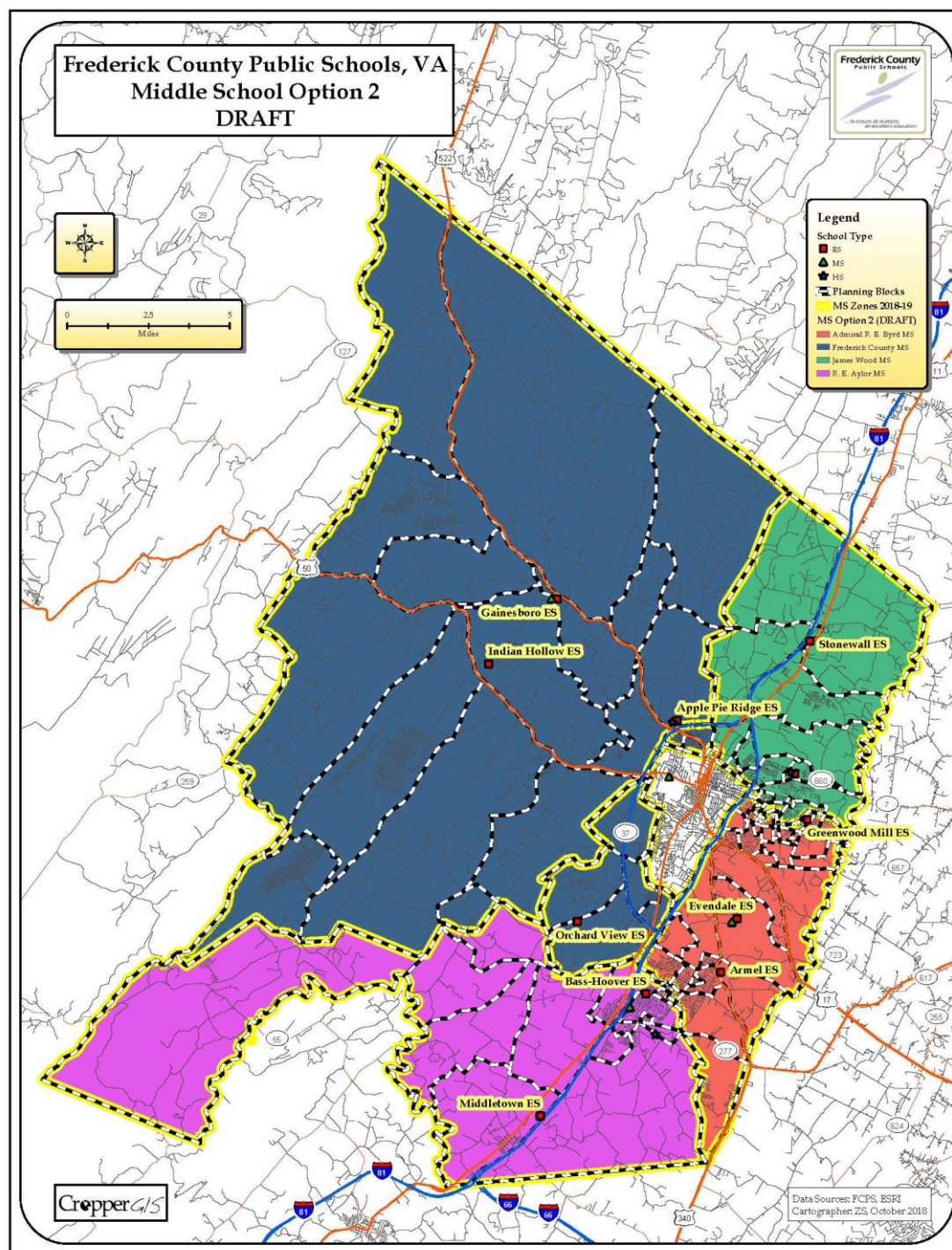
- Study the geography i.e. shape of the current and option zone lines
 - Look at where the lines shift away from the current vs. the option
 - Look at road networks and envision how school busses and parents would travel to school
- Study the tables
 - Review the balance of enrollment, and identify any imbalances that may exist
 - Question why there may be imbalances, and examine possible ways to provide better balance

Review of DRAFT Options

Review Objective and Criteria

- Understand how DRAFT options support the realignment study objectives and criteria.
- Examine ways to improve alignment with realignment study objectives and criteria.





Review of DRAFT Options

Middle School	2018-19 Capacity	Total Enrolled	MS Option 1 Estimated Enrollment ¹	MS Option 2 Estimated Enrollment ¹
Admiral R. E. Byrd MS	900	970	953	953
Frederick County MS	900	713	854	857
James Wood MS	900	953	811	808
R. E. Aylor MS	720	609	627	627
Total	3420	3245	3245	3245

Student counts are based on the 9/14/2018 FCPS student database.

¹ Estimated enrollment is calculated by adding the 2018-19 Unmatched students to their currently enrolled school plus the 6-8th grade live-in totals within each option.

Middle School	2018-19 Capacity	Enrolled Utilization	MS Option 1 Estimated Utilization	MS Option 2 Estimated Utilization
Admiral R. E. Byrd MS	900	108%	106%	106%
Frederick County MS	900	79%	95%	95%
James Wood MS	900	106%	90%	90%
R. E. Aylor MS	720	85%	87%	87%
Total	3420	95%	95%	95%

Student counts are based on the 9/14/2018 FCPS student database.

¹ Estimated enrollment is calculated by adding the 2018-19 Unmatched students to their currently enrolled school plus the 6-8th grade live-in totals within each option.

Review of DRAFT Options

Middle School	Enrolled		MS Option 1		MS Option 2	
	Free or Reduced Meals %	Non-Free or Reduced Meals %	Free or Reduced Meals %	Non-Free or Reduced Meals %	Free or Reduced Meals %	Non-Free or Reduced Meals %
Admiral R. E. Byrd MS	31%	69%	31%	69%	31%	69%
Frederick County MS	38%	62%	38%	62%	38%	62%
James Wood MS	46%	54%	47%	53%	47%	53%
R. E. Aylor MS	38%	62%	39%	61%	39%	61%
Total	38%	62%	38%	62%	38%	62%

Student counts are based on the 9/14/2018 FCPS student database.

Middle School	Enrolled				MS Option 1 Estimated Enrollment ¹				MS Option 2 Estimated Enrollment ¹			
	Percent Black	Percent White	Percent Hispanic	Percent Other	Percent Black	Percent White	Percent Hispanic	Percent Other	Percent Black	Percent White	Percent Hispanic	Percent Other
Admiral R. E. Byrd MS	6%	68%	18%	8%	6%	68%	18%	9%	6%	68%	18%	9%
Frederick County MS	2%	87%	8%	4%	2%	85%	9%	4%	2%	84%	10%	4%
James Wood MS	5%	59%	27%	8%	6%	56%	29%	9%	6%	57%	29%	8%
R. E. Aylor MS	4%	76%	14%	6%	4%	75%	14%	6%	4%	75%	14%	6%
Total	5%	71%	18%	7%	5%	71%	18%	7%	5%	71%	18%	7%

Student counts are based on the 9/14/2018 FCPS student database.

¹ Estimated enrollment is calculated by adding the 2018-19 Unmatched students to their currently enrolled school plus the 6-8th grade live-in totals within each option.

Review of DRAFT Options

Option	Total 6-8th Live-In Students Impacted
Option 1	135
Option 2	138

MS Zone 2018-19	MS Option 1 Zone	Total 6-8th Live In Students
Admiral R. E. Byrd MS	Admiral R. E. Byrd MS	953
Frederick County MS	Frederick County MS	713
James Wood MS	Frederick County MS	135
James Wood MS	James Wood MS	806
R. E. Aylor MS	R. E. Aylor MS	622

MS Zone 2018-19	MS Option 2 Zone	Total 6-8th Live In Students
Admiral R. E. Byrd MS	Admiral R. E. Byrd MS	953
Frederick County MS	Frederick County MS	713
James Wood MS	Frederick County MS	138
James Wood MS	James Wood MS	803
R. E. Aylor MS	R. E. Aylor MS	622

Review of DRAFT Options

2018-19 ES Zone	2018-19 MS Zone	Total K-5th Live-In	ES Attendance
Apple Pie Ridge ES	Frederick County MS	207	53%
Apple Pie Ridge ES	James Wood MS	186	47%
Armel ES	Admiral R. E. Byrd MS	628	100%
Bass-Hoover ES	R. E. Aylor MS	600	100%
Evendale ES	Admiral R. E. Byrd MS	516	100%
Gainesboro ES	Frederick County MS	429	100%
Greenwood Mill ES	Admiral R. E. Byrd MS	381	63%
Greenwood Mill ES	James Wood MS	225	37%
Indian Hollow ES	Frederick County MS	430	95%
Indian Hollow ES	R. E. Aylor MS	24	5%
Middletown ES	R. E. Aylor MS	497	100%
Orchard View ES	Admiral R. E. Byrd MS	183	43%
Orchard View ES	Frederick County MS	88	20%
Orchard View ES	James Wood MS	142	33%
Orchard View ES	R. E. Aylor MS	17	4%
Redbud Run ES	James Wood MS	694	100%
Stonewall ES	James Wood MS	668	100%

2018-19 ES Zone	MS Option 2 Zone	Total K-5th Live-In	ES Attendance
Apple Pie Ridge ES	Frederick County MS	332	84%
Apple Pie Ridge ES	James Wood MS	61	16%
Armel ES	Admiral R. E. Byrd MS	628	100%
Bass-Hoover ES	R. E. Aylor MS	600	100%
Evendale ES	Admiral R. E. Byrd MS	516	100%
Gainesboro ES	Frederick County MS	429	100%
Greenwood Mill ES	Admiral R. E. Byrd MS	381	63%
Greenwood Mill ES	James Wood MS	225	37%
Indian Hollow ES	Frederick County MS	430	95%
Indian Hollow ES	R. E. Aylor MS	24	5%
Middletown ES	R. E. Aylor MS	497	100%
Orchard View ES	Admiral R. E. Byrd MS	183	43%
Orchard View ES	Frederick County MS	230	53%
Orchard View ES	R. E. Aylor MS	17	4%
Redbud Run ES	James Wood MS	694	100%
Stonewall ES	James Wood MS	668	100%

2018-19 ES Zone	MS Option 1 Zone	Total K-5th Live-In	ES Attendance
Apple Pie Ridge ES	Frederick County MS	332	84%
Apple Pie Ridge ES	James Wood MS	61	16%
Armel ES	Admiral R. E. Byrd MS	628	100%
Bass-Hoover ES	R. E. Aylor MS	600	100%
Evendale ES	Admiral R. E. Byrd MS	516	100%
Gainesboro ES	Frederick County MS	429	100%
Greenwood Mill ES	Admiral R. E. Byrd MS	381	63%
Greenwood Mill ES	James Wood MS	225	37%
Indian Hollow ES	Frederick County MS	430	95%
Indian Hollow ES	R. E. Aylor MS	24	5%
Middletown ES	R. E. Aylor MS	497	100%
Orchard View ES	Admiral R. E. Byrd MS	183	43%
Orchard View ES	Frederick County MS	88	20%
Orchard View ES	James Wood MS	142	33%
Orchard View ES	R. E. Aylor MS	17	4%
Redbud Run ES	James Wood MS	694	100%
Stonewall ES	Frederick County MS	132	20%
Stonewall ES	James Wood MS	536	80%

Review of DRAFT Options

2018-19 MS Zone	2018-19 HS Zone	Total 6-8th Live-In	ES Attendance
Admiral R. E. Byrd MS	Millbrook High School	518	54%
Admiral R. E. Byrd MS	Sherando High School	435	46%
Frederick County MS	James Wood High School	713	100%
James Wood MS	James Wood High School	286	30%
James Wood MS	Millbrook High School	601	64%
James Wood MS	Sherando High School	54	6%
R. E. Aylor MS	Sherando High School	622	100%

MS Option 1 Zone	2018-19 HS Zone	Total 6-8th Live-In	ES Attendance
Admiral R. E. Byrd MS	Millbrook High School	518	54%
Admiral R. E. Byrd MS	Sherando High School	435	46%
Frederick County MS	James Wood High School	848	100%
James Wood MS	James Wood High School	151	19%
James Wood MS	Millbrook High School	601	75%
James Wood MS	Sherando High School	54	7%
R. E. Aylor MS	Sherando High School	622	100%

MS Option 2 Zone	2018-19 HS Zone	Total 6-8th Live-In	ES Attendance
Admiral R. E. Byrd MS	Millbrook High School	518	54%
Admiral R. E. Byrd MS	Sherando High School	435	46%
Frederick County MS	James Wood High School	797	94%
Frederick County MS	Sherando High School	54	6%
James Wood MS	James Wood High School	202	25%
James Wood MS	Millbrook High School	601	75%
R. E. Aylor MS	Sherando High School	622	100%

Small Group Exercise

Break into 3 groups

Each group review the options tables and maps.

Planning blocks can be adjusted if you feel they are dividing a neighborhood or can be refined in any way.

Please feel free to note any changes or highlight any part of the map you want to discuss. If you have any notes/comments, please write them directly on the plots.

Once you've had time to evaluate the info, the groups will report to the full committee.

Next Meeting is Wednesday, October 24th.

6:30pm @ FCPS School Board Office

Same place, same time!