

# Central Area Redistricting Study -Committee Meeting 3-

November 13, 2013



# Welcome

## *Tonight's Agenda*

- 5:30 - 6:00 Dinner, Welcome and Introductions**
- 6:00 - 6:45 Discuss feedback obtained during break and review new handouts**
- 6:45 - 7:15 Perform scoring exercise (individually) and discuss as a group**
- 7:15 - 7:30 Discuss next steps and adjourn**

# Welcome

## *Tonight's Goals*

### **Tonight's Three Goals:**

- #1. To discuss feedback since last meeting
- #2. Present options 4-6 and new statistics on demographics and impacts
- #3. Perform scoring table exercise individually and discuss as a group

*Feedback and News  
since last meeting*

# Updates on Feedback

- Several communities in the region have engaged in the process and provided feedback.
  - Riderwood / West Towson / Hampton
  - Padonia
  - Lutherville Lab and rezoning affects on magnets
  - Communities north of Shawan desire to attend Sparks
  - Franklin ES communities' desire to attend new school
  - Others?

# Review of new options and stats

- Committee requested more information on options, including:
  - Percent Minority (non-white)
  - Percent Free-Reduced Lunch
  - Student impact counts
- Also, per committee feedback and public input, 3 new options have been drafted for your review.
  - These are options 4-6

# Review of new options and stats

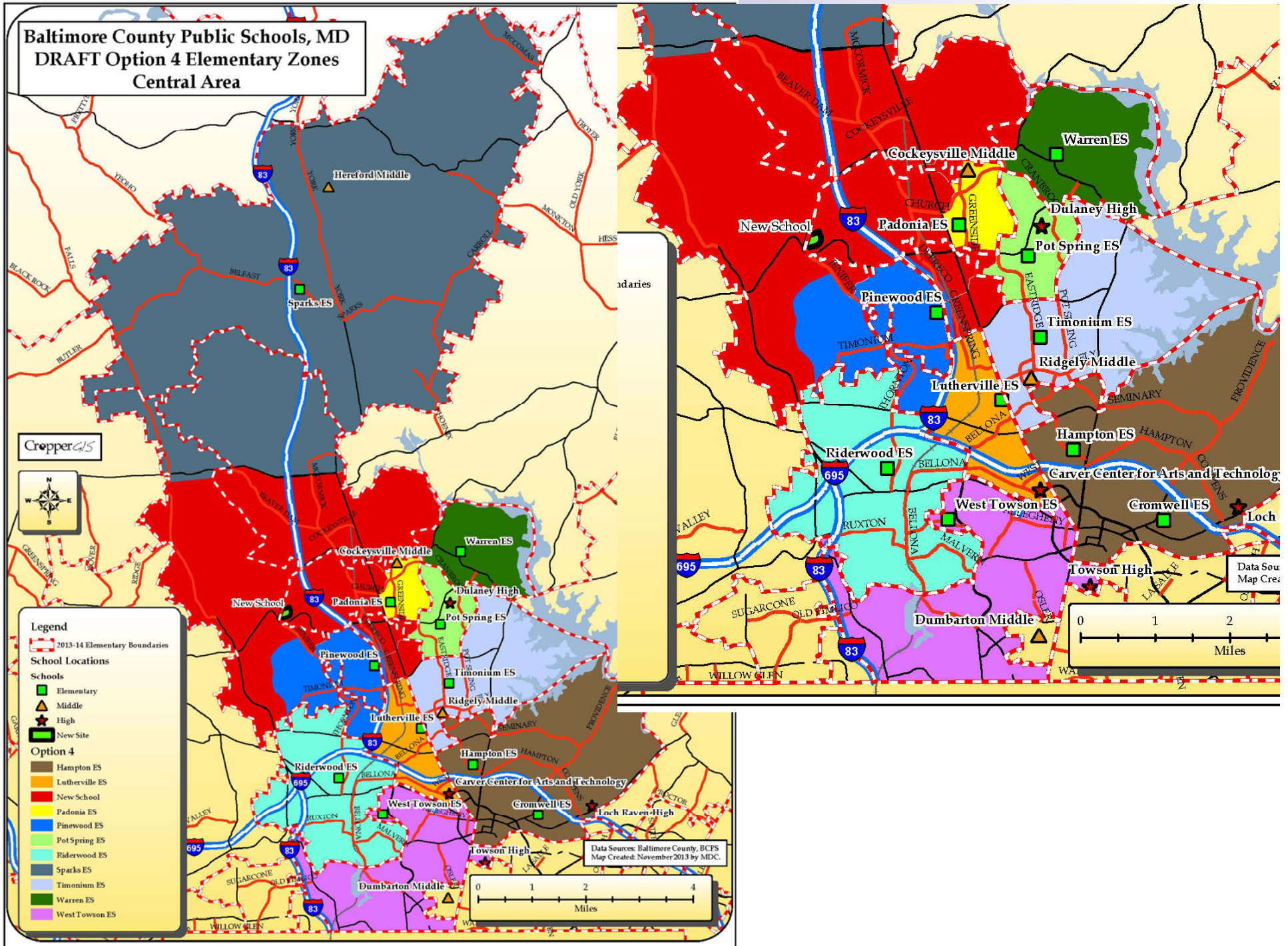
## Current capacity and live-in stats

		Current Enrollment and Live-In Counts			
School Name	State Rated Capacity	2013-14 K-5 Grade Enrollment	K-5 Live In Counts (2013-14)	K-5 Live In Utilization	Current Live In Over Capacity
Hampton*	648	554	656	101.2%	8
Lutherville	407	543	482	118.4%	75
Padonia	311	422	426	137.0%	115
Pinewood	566	590	574	101.4%	8
Pot Spring	477	578	641	134.4%	164
Riderwood	463	490	471	101.7%	8
Sparks	410	561	556	135.6%	146
Timonium	395	466	460	116.5%	65
Warren	395	400	412	104.3%	17
West Towson	451	542	548	121.5%	97
<b>Total</b>	<b>4,523</b>	<b>5,146</b>	<b>5,226</b>	<b>115.5%</b>	<b>703</b>

\*99 students attend Cromwell but live inside the Hampton Boundary. Cromwell Magnet is located in the Hampton boundary, but most students who attend the magnet live outside of the study area (except for Hampton).



# Baltimore County Public Schools, MD DRAFT Option 4 Elementary Zones Central Area

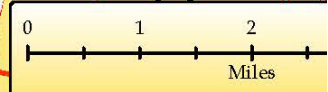
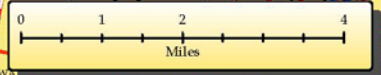


CropperGIS



- Legend**
- 2013-14 Elementary Boundaries
  - School Locations**
  - Elementary
  - ▲ Middle
  - ★ High
  - ★ New Site
  - Option 4**
  - Hampton ES
  - Lutherville ES
  - New School
  - Padonia ES
  - Pinewood ES
  - Pot Spring ES
  - Riderwood ES
  - Sparks ES
  - Timonium ES
  - Warren ES
  - West Towson ES

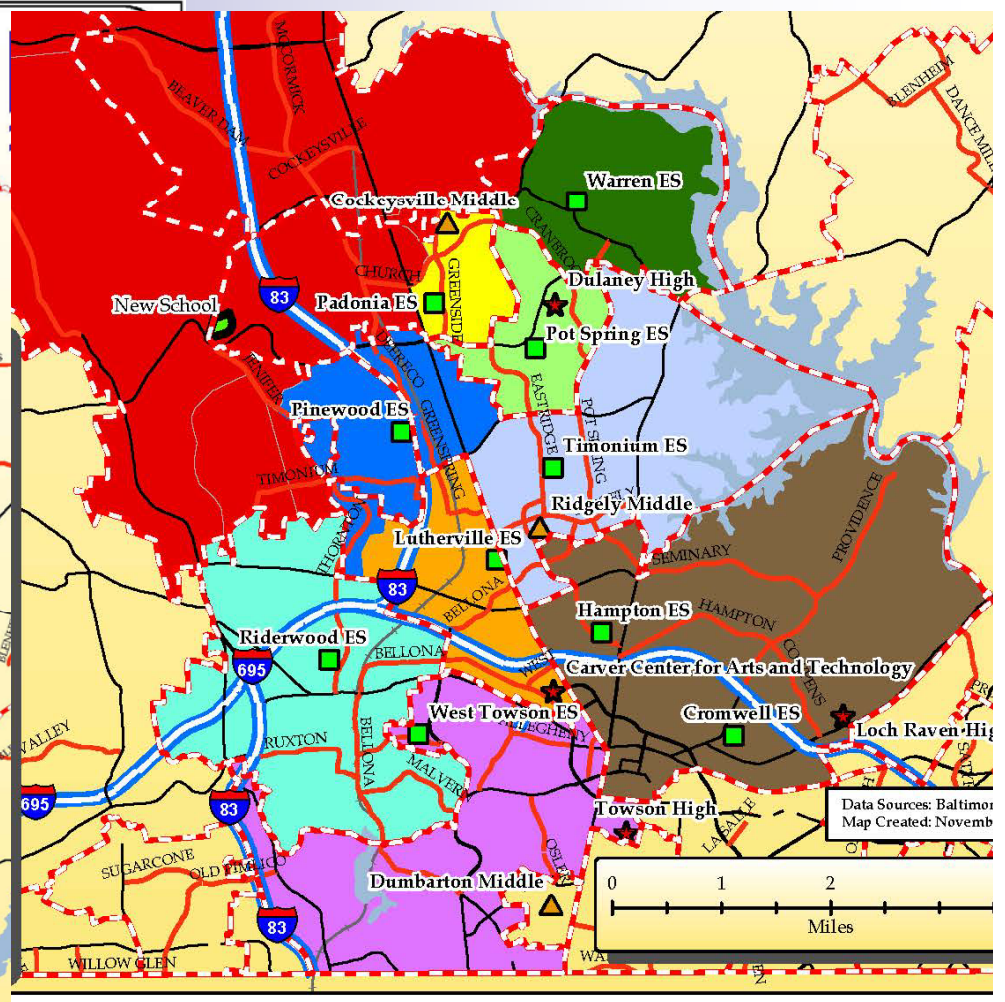
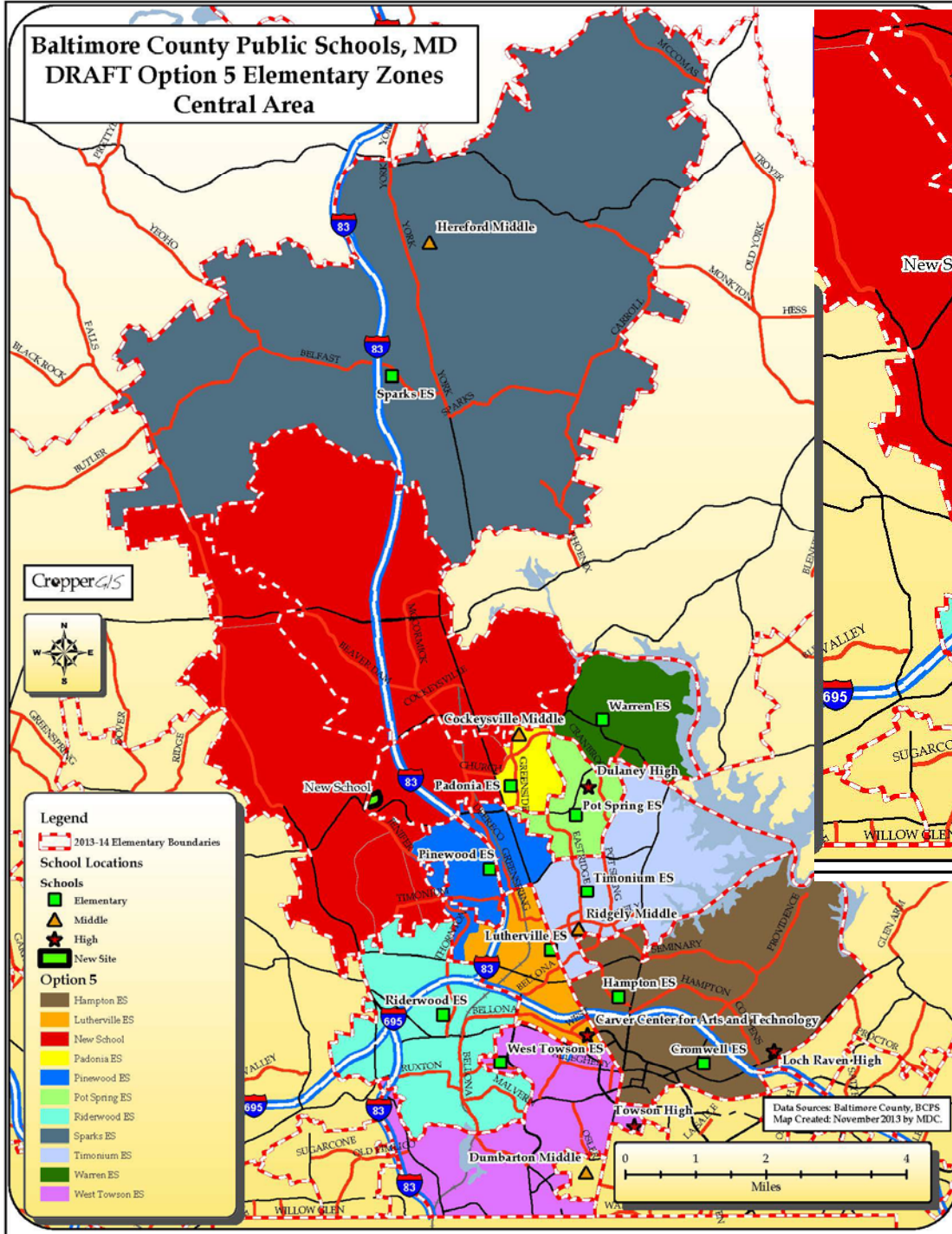
Data Sources: Baltimore County, BCPS  
Map Created: November 2013 by MDC



Data Source  
Map Created

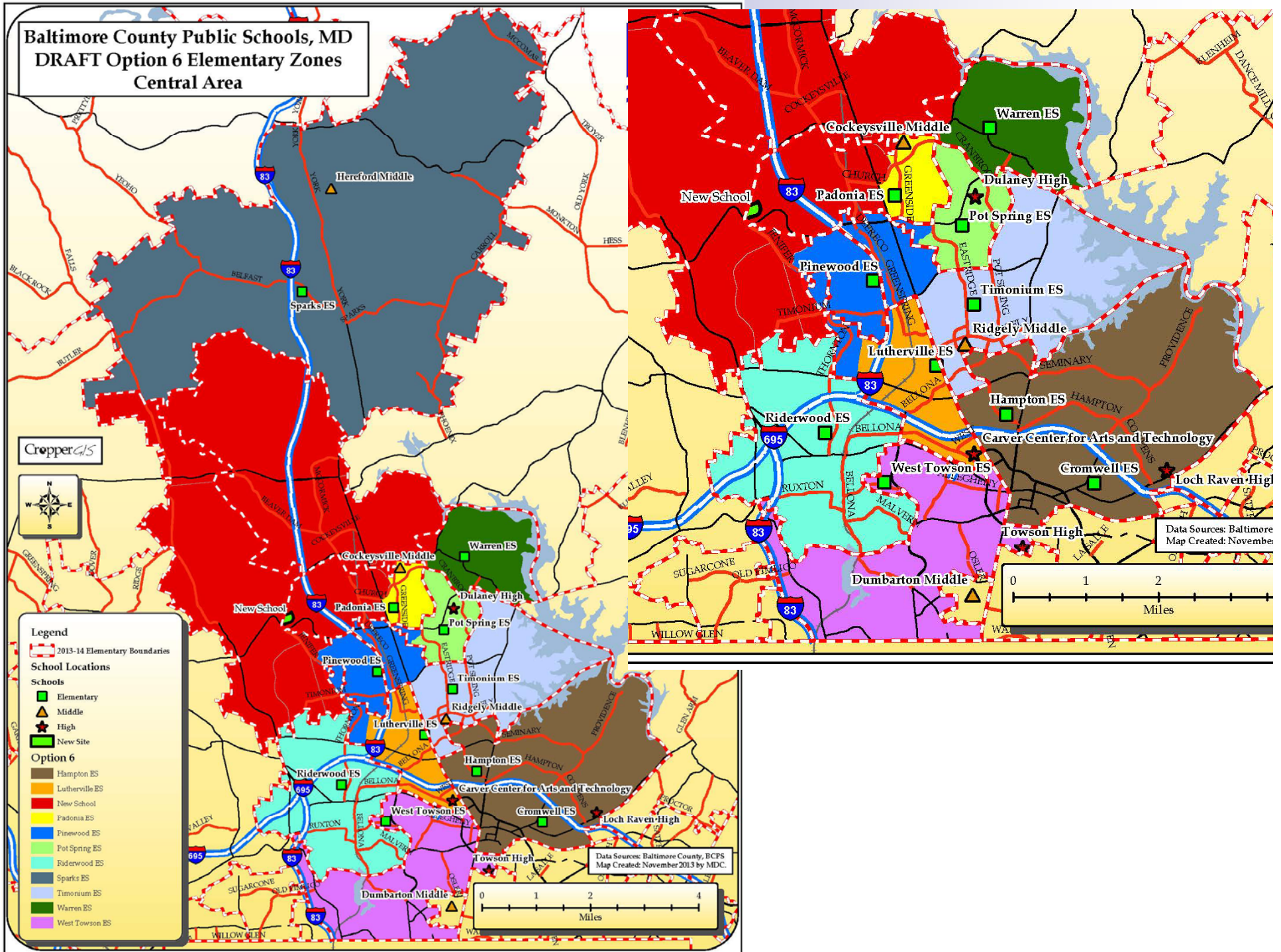


**Baltimore County Public Schools, MD  
DRAFT Option 5 Elementary Zones  
Central Area**





**Baltimore County Public Schools, MD  
DRAFT Option 6 Elementary Zones  
Central Area**

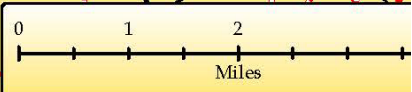


CropperGIS

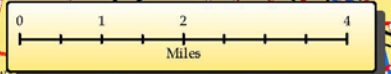


- Legend**
- 2013-14 Elementary Boundaries
  - School Locations**
  - Elementary
  - Middle
  - High
  - New Site
  - Option 6**
  - Hampton ES
  - Lutherville ES
  - New School
  - Padonia ES
  - Pinewood ES
  - Pot Spring ES
  - Riderwood ES
  - Sparks ES
  - Timonium ES
  - Warren ES
  - West Towson ES

Data Sources: Baltimore  
Map Created: November



Data Sources: Baltimore County, BCPS  
Map Created: November 2013 by MDC.



# Review of new options and stats

		Enrollment Estimates					
School Name	State Rated Capacity	Option 1	Option 2	Option 3	Option 4	Option 5	Option 6
Hampton*	648	623	597	597	557	557	557
Lutherville	407	448	408	408	323	363	357
New School	700	506	580	508	488	477	477
Padonia	311	305	312	305	352	359	359
Pinewood	566	557	544	560	547	504	549
Pot Spring	477	424	477	480	438	477	438
Riderwood	463	415	415	415	471	471	471
Sparks**	410	556	556	556	588	556	556
Timonium	395	391	336	396	421	421	421
Warren	395	394	394	394	394	394	394
West Towson	451	508	508	508	548	548	548
<b>Total</b>	<b>5,223</b>	<b>5,127</b>	<b>5,127</b>	<b>5,127</b>	<b>5,127</b>	<b>5,127</b>	<b>5,127</b>

\*Hampton option counts remove 99 students attending Cromwell but living inside Hampton Boundary. Cromwell Magnet is located in the Hampton boundary, but most students who attend the magnet live outside of the study area (except for Hampton).

# Review of new options and stats

		Utilization Estimates					
School Name	State Rated Capacity	Option 1	Option 2	Option 3	Option 4	Option 5	Option 6
Hampton	648	96.1%	92.1%	92.1%	86.0%	86.0%	86.0%
Lutherville	407	110.1%	100.2%	100.2%	100.2%	89.2%	87.7%
New School	700	72.3%	82.9%	72.6%	61.9%	68.1%	68.1%
Padonia	311	98.1%	100.3%	98.1%	98.1%	115.4%	115.4%
Pinewood	566	98.4%	96.1%	98.9%	96.6%	89.0%	97.0%
Pot Spring	477	88.9%	100.0%	100.6%	100.6%	100.0%	91.8%
Riderwood	463	89.6%	89.6%	89.6%	101.7%	101.7%	101.7%
Sparks	410	135.6%	135.6%	135.6%	143.4%	135.6%	135.6%
Timonium	395	99.0%	85.1%	100.3%	100.3%	106.6%	106.6%
Warren	395	99.7%	99.7%	99.7%	99.7%	99.7%	99.7%
West Towson	451	112.6%	112.6%	112.6%	121.5%	121.5%	121.5%
<b>Total</b>	<b>5,223</b>	<b>98.2%</b>	<b>98.2%</b>	<b>98.2%</b>	<b>98.2%</b>	<b>98.2%</b>	<b>98.2%</b>

# Review of new options and stats

School Name	State Rated Capacity	Over / Under					
		Option 1	Option 2	Option 3	Option 4	Option 5	Option 6
Hampton	648	-25	-51	-51	-91	-91	-91
Lutherville	407	41	1	1	1	-44	-50
New School	700	-194	-120	-192	-267	-223	-223
Padonia	311	-6	1	-6	-6	48	48
Pinewood	566	-9	-22	-6	-19	-62	-17
Pot Spring	477	-53	0	3	3	0	-39
Riderwood	463	-48	-48	-48	8	8	8
Sparks	410	146	146	146	178	146	146
Timonium	395	-4	-59	1	1	26	26
Warren	395	-1	-1	-1	-1	-1	-1
West Towson	451	57	57	57	97	97	97
<b>Total</b>	<b>5,223</b>	<b>-96</b>	<b>-96</b>	<b>-96</b>	<b>-96</b>	<b>-96</b>	<b>-96</b>



# Review of new options and stats

School Name	Current Live In	Percent Minority					
		Option 1	Option 2	Option 3	Option 4	Option 5	Option 6
Hampton	33%	32%	32%	32%	33%	33%	33%
Lutherville	41%	38%	38%	38%	39%	39%	39%
New School		27%	37%	28%	41%	36%	36%
Padonia	84%	88%	88%	88%	86%	86%	86%
Pinewood	22%	41%	31%	43%	30%	31%	34%
Pot Spring	59%	64%	65%	57%	65%	65%	65%
Riderwood	15%	15%	15%	15%	15%	15%	15%
Sparks	15%	15%	15%	15%	15%	15%	15%
Timonium	30%	35%	28%	35%	29%	29%	29%
Warren	60%	61%	61%	61%	61%	61%	61%
West Towson	21%	21%	21%	21%	21%	21%	21%
<b>Total</b>	<b>37%</b>	<b>37%</b>	<b>37%</b>	<b>37%</b>	<b>37%</b>	<b>37%</b>	<b>37%</b>



# Review of new options and stats

		Free-Reduced Lunch Percentages					
School Name	Current Live In	Option 1	Option 2	Option 3	Option 4	Option 5	Option 6
Hampton	18%	18%	19%	19%	18%	18%	18%
Lutherville	15%	15%	16%	16%	19%	17%	17%
New School	NA	6%	20%	5%	23%	17%	17%
Padonia	61%	61%	61%	61%	63%	62%	62%
Pinewood	4%	22%	8%	25%	5%	9%	11%
Pot Spring	41%	46%	49%	39%	50%	49%	50%
Riderwood	2%	3%	3%	3%	2%	2%	2%
Sparks	7%	7%	7%	7%	7%	7%	7%
Timonium	11%	21%	9%	19%	9%	9%	9%
Warren	45%	45%	45%	45%	45%	45%	45%
West Towson	8%	6%	6%	6%	8%	8%	8%
<b>Total</b>	<b>20%</b>	<b>20%</b>	<b>20%</b>	<b>20%</b>	<b>20%</b>	<b>20%</b>	<b>20%</b>

# Review of new options and stats

Option	Total Live-In Impacted
Option 1	986
Option 2	903
Option 3	977
Option 4	679
Option 5	635
Option 6	680

# Review of new options and stats

Current Zone	ES Option 1 Zone	Total Students Live-In
Hampton ES	Hampton ES	557
Lutherville ES	Lutherville ES	363
Lutherville ES	New School	119
Padonia ES	New School	15
Padonia ES	Padonia ES	305
Padonia ES	Pinewood ES	99
Padonia ES	Pot Spring ES	7
Pinewood ES	New School	279
Pinewood ES	Pinewood ES	295
Pot Spring ES	New School	37
Pot Spring ES	Pinewood ES	127
Pot Spring ES	Pot Spring ES	417
Pot Spring ES	Timonium ES	60
Riderwood ES	New School	56
Riderwood ES	Riderwood ES	415
Sparks ES	Sparks ES	556
Timonium ES	Hampton ES	26
Timonium ES	Lutherville ES	85
Timonium ES	Pinewood ES	18
Timonium ES	Timonium ES	331
Warren ES	Pinewood ES	18
Warren ES	Warren ES	394
West Towson ES	Hampton ES	40
West Towson ES	West Towson ES	508

Current Zone	ES Option 2 Zone	Total Students Live-In
Hampton ES	Hampton ES	557
Lutherville ES	Lutherville ES	323
Lutherville ES	Pinewood ES	159
Padonia ES	New School	114
Padonia ES	Padonia ES	312
Pinewood ES	New School	228
Pinewood ES	Pinewood ES	346
Pot Spring ES	New School	164
Pot Spring ES	Pot Spring ES	477
Riderwood ES	New School	56
Riderwood ES	Riderwood ES	415
Sparks ES	Sparks ES	556
Timonium ES	Lutherville ES	85
Timonium ES	Pinewood ES	39
Timonium ES	Timonium ES	336
Warren ES	New School	18
Warren ES	Warren ES	394
West Towson ES	Hampton ES	40

# Review of new options and stats

Current Zone	ES Option 3 Zone	Total Students Live-In
Hampton ES	Hampton ES	557
Lutherville ES	Lutherville ES	323
Lutherville ES	New School	159
Padonia ES	New School	15
Padonia ES	Padonia ES	305
Padonia ES	Pinewood ES	104
Padonia ES	Pot Spring ES	2
Pinewood ES	New School	278
Pinewood ES	Pinewood ES	296
Pot Spring ES	Pinewood ES	121
Pot Spring ES	Pot Spring ES	460
Pot Spring ES	Timonium ES	60
Riderwood ES	New School	56
Riderwood ES	Riderwood ES	415
Sparks ES	Sparks ES	556
Timonium ES	Lutherville ES	85
Timonium ES	Pinewood ES	39
Timonium ES	Timonium ES	336
Warren ES	Pot Spring ES	18
Warren ES	Warren ES	394
West Towson ES	Hampton ES	40
West Towson ES	West Towson ES	508

Current Zone	ES Option 4 Zone	Total Students Live-In
Hampton ES	Hampton ES	557
Lutherville ES	Lutherville ES	323
Lutherville ES	Pinewood ES	159
Padonia ES	New School	74
Padonia ES	Padonia ES	352
Pinewood ES	New School	185
Pinewood ES	Pinewood ES	388
Pinewood ES	Sparks ES	1
Pot Spring ES	New School	172
Pot Spring ES	Pot Spring ES	438
Pot Spring ES	Sparks ES	31
Riderwood ES	Riderwood ES	471
Sparks ES	Sparks ES	556
Timonium ES	New School	39
Timonium ES	Timonium ES	421
Warren ES	New School	18
Warren ES	Warren ES	394
West Towson ES	West Towson ES	548

# Review of new options and stats

Current Zone	ES Option 5 Zone	Total Students Live-In
Hampton ES	Hampton ES	557
Lutherville ES	Lutherville ES	363
Lutherville ES	Pinewood ES	119
Padonia ES	New School	67
Padonia ES	Padonia ES	359
Pinewood ES	New School	228
Pinewood ES	Pinewood ES	346
Pot Spring ES	New School	164
Pot Spring ES	Pot Spring ES	477
Riderwood ES	Riderwood ES	471
Sparks ES	Sparks ES	556
Timonium ES	Pinewood ES	39
Timonium ES	Timonium ES	421
Warren ES	New School	18
Warren ES	Warren ES	394
West Towson ES	West Towson ES	548

Current Zone	ES Option 6 Zone	Total Students Live-In
Hampton ES	Hampton ES	557
Lutherville ES	Lutherville ES	357
Lutherville ES	Pinewood ES	125
Padonia ES	New School	67
Padonia ES	Padonia ES	359
Pinewood ES	New School	228
Pinewood ES	Pinewood ES	346
Pot Spring ES	New School	164
Pot Spring ES	Pinewood ES	39
Pot Spring ES	Pot Spring ES	438
Riderwood ES	Riderwood ES	471
Sparks ES	Sparks ES	556
Timonium ES	Pinewood ES	39
Timonium ES	Timonium ES	421
Warren ES	New School	18
Warren ES	Warren ES	394
West Towson ES	West Towson ES	548

# *Options Scoring Table Exercise*



Please rate each option from 1 to 4 based on how it meets the Redistricting Guidelines and other criteria for redistricting.

Remember to focus on the entire option as a whole when scoring as opposed to one individual area.

A score of 1 would least meet the criteria, and a score of 4 would best meet the criteria.

	<b>1: Building utilization</b>	<b>2: Geography/ Proximity</b>	<b>3: Transportation efficiency and Walkability if possible?</b>	<b>4: Student Impacts</b>	<b>5: Demographics</b>	<b>6: Socio- Economics</b>	<b>Total Score</b>
Option #							
1							
2							
3							
4							
5							
6							

1: Refer to tables that show building utilization percentages and over/under counts

2: Reference maps. Does majority of population live close to the school? Could students attend another school closer that has space?

3. Are there students who currently walk who will need transportation as a result of the map? Are there students who could walk to school but are zoned to a school where they would need transportation?

4. Are students split off to different schools in small numbers? Note small splits for further review.

5. How do the current vs. option live-in demographics vary? Is one option better than the other?

6. How do the current vs. option live-in socio-economics vary? Is one option better than the other?

# General Announcements and Upcoming Schedule

# General Announcements & Upcoming Schedule

## November 2013: Upcoming Events

Sun	Mon	Tue	Wed	Thu	Fri	Sat
27	28	29	30 Committee Meeting 5:30-7:30 pm	31	November 1	2
3	4	5	6	7	8	9
10	11	12	13 Committee Meeting 5:30-7:30 pm	14	15	16
17	18	19	20 Committee Meeting 5:30-7:30 pm	21	22	23

# Communication Logistics

## Contact Info:

Cropper GIS

Matthew Cropper

[mcropper@croppergis.com](mailto:mcropper@croppergis.com)

614.451.1242

BCPS Office of Strategic Planning

Chris Brocato - [cbrocato@bcps.org](mailto:cbrocato@bcps.org)

and/or Robin Allen - [rallen4@bcps.org](mailto:rallen4@bcps.org)

410.887.4216

*Questions*

**See you next meeting on  
November 20, 2013!**

**Same time, same place**