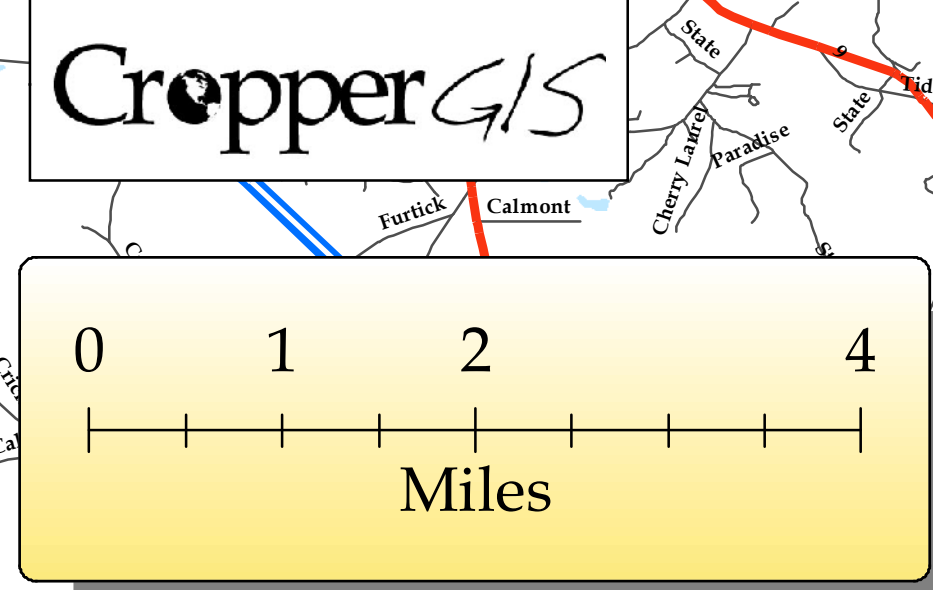
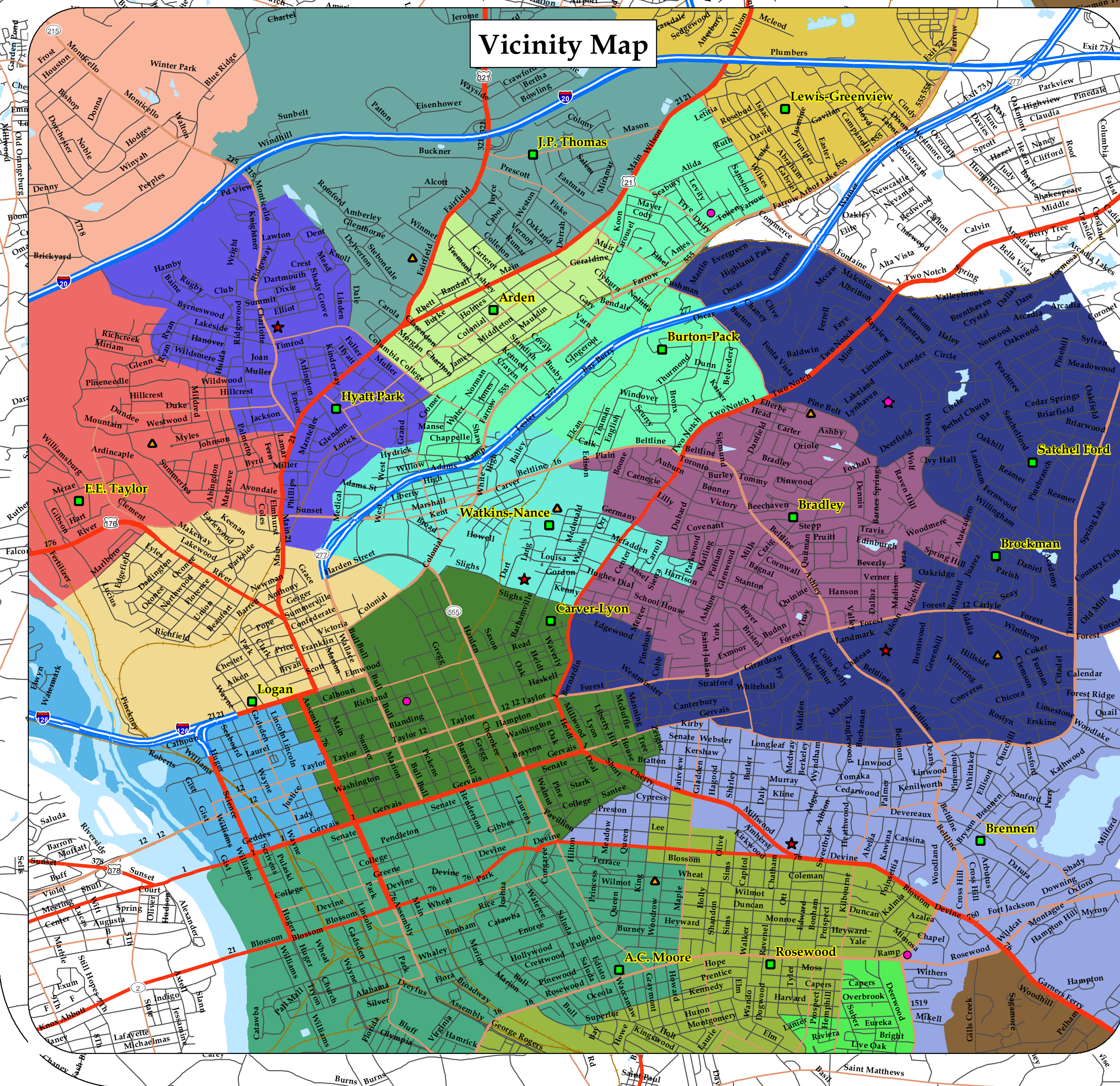
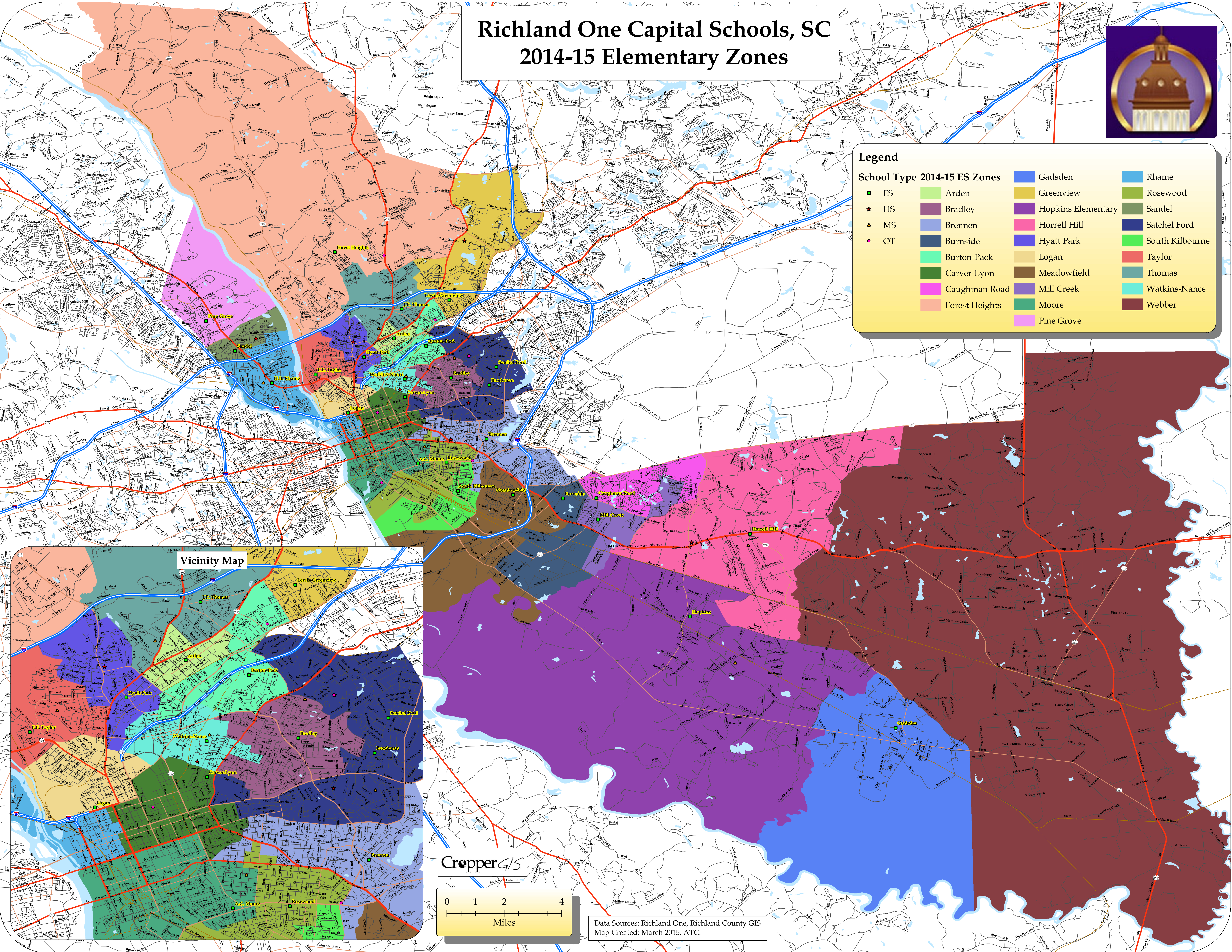


# Richland One Capital Schools, SC 2014-15 Elementary Zones



## Legend

School Type 2014-15 ES Zones		School Type 2014-15 ES Zones	
■ ES	■ Arden	■ Gadsden	■ Rhame
★ HS	■ Bradley	■ Greenview	■ Rosewood
▲ MS	■ Brennan	■ Hopkins Elementary	■ Sandel
● OT	■ Burnside	■ Horrell Hill	■ Satchel Ford
	■ Burton-Pack	■ Hyatt Park	■ South Kilbourne
	■ Carver-Lyon	■ Logan	■ Taylor
	■ Caughman Road	■ Meadowfield	■ Thomas
	■ Forest Heights	■ Mill Creek	■ Watkins-Nance
		■ Moore	■ Webber
		■ Pine Grove	



Data Sources: Richland One, Richland County GIS  
Map Created: March 2015, ATC.

CropperGIS

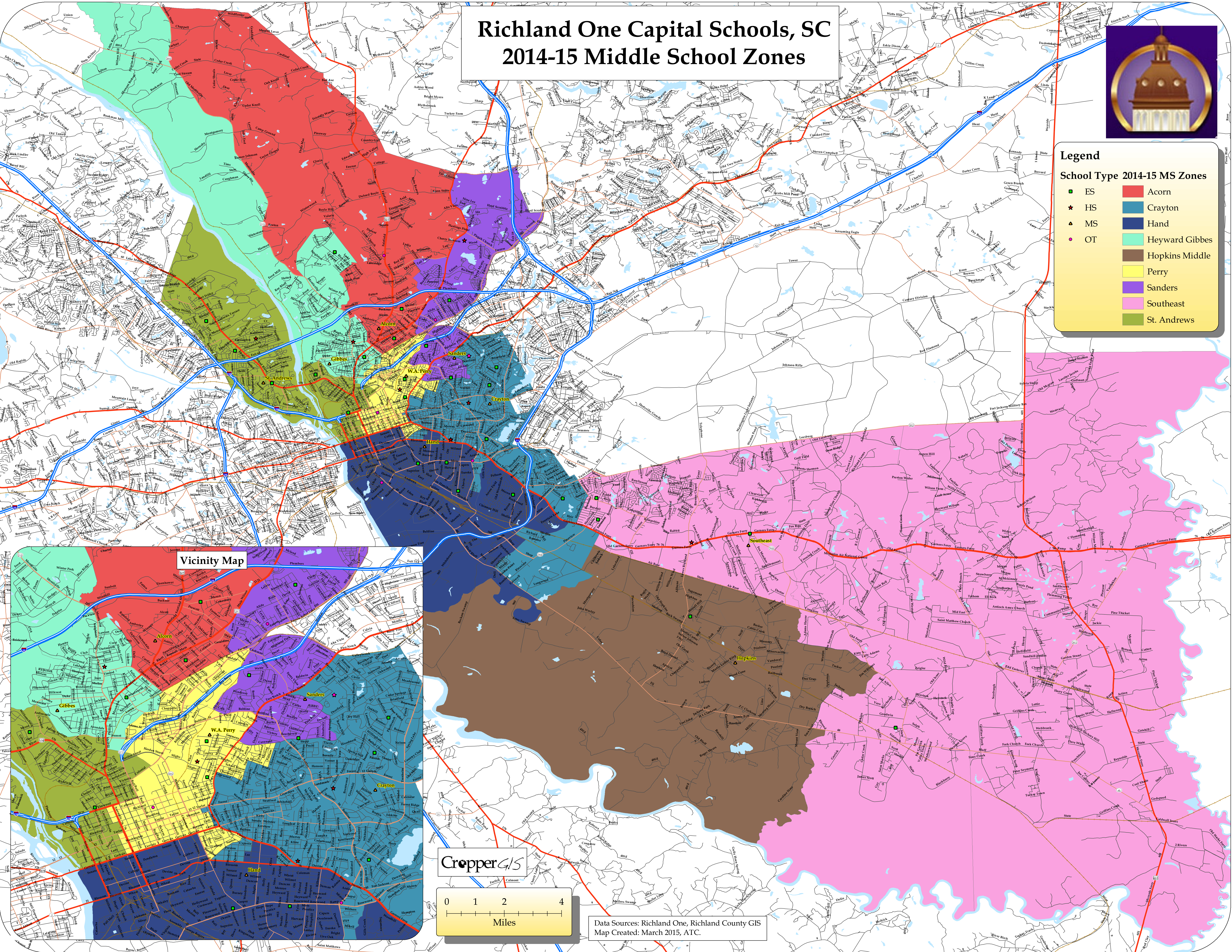
# Richland One Capital Schools, SC 2014-15 Middle School Zones



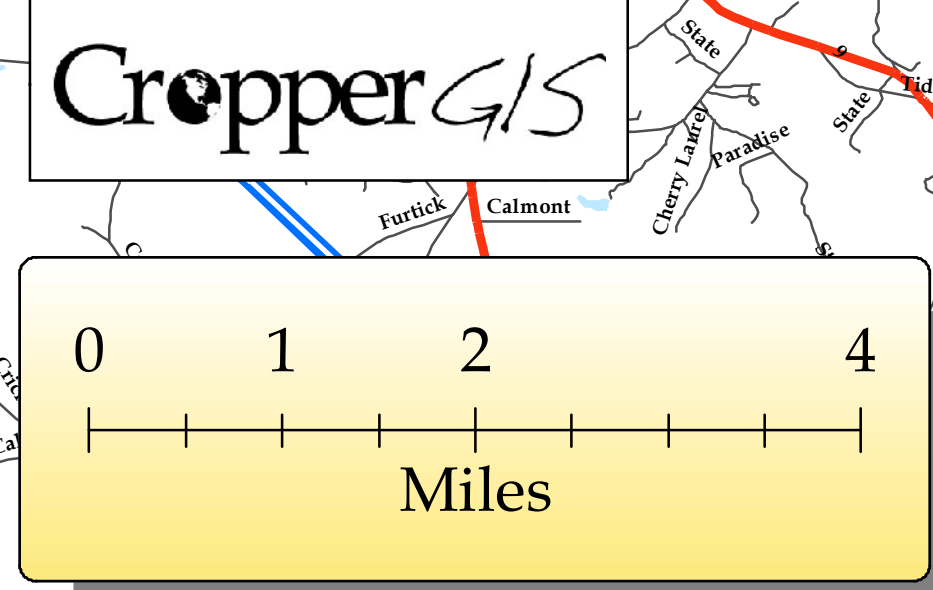
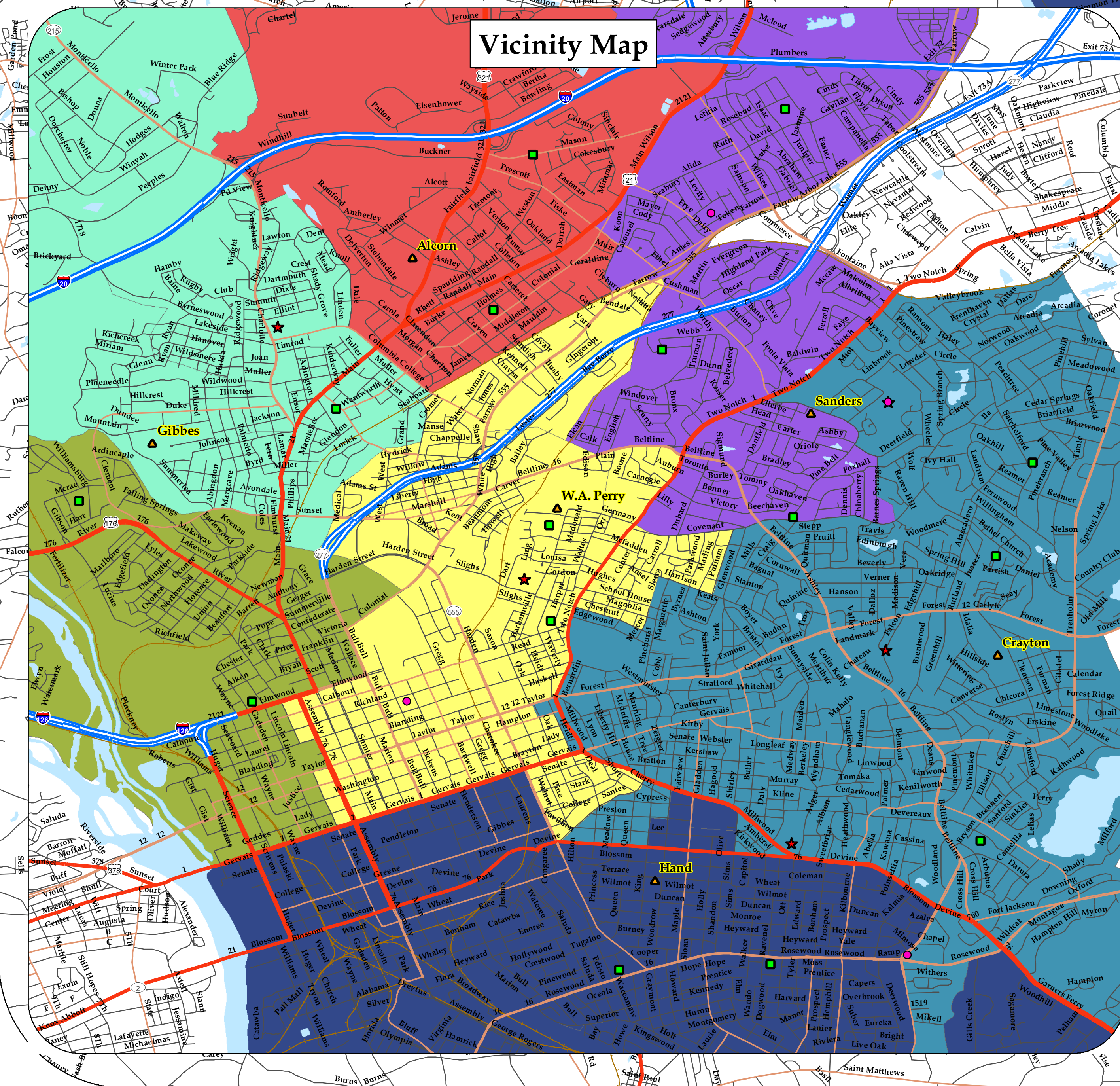
## Legend

### School Type 2014-15 MS Zones

- |      |                  |
|------|------------------|
| ■ ES | ■ Acorn          |
| ★ HS | ■ Crayton        |
| ▲ MS | ■ Hand           |
| ● OT | ■ Heyward Gibbs  |
|      | ■ Hopkins Middle |
|      | ■ Perry          |
|      | ■ Sanders        |
|      | ■ Southeast      |
|      | ■ St. Andrews    |



## Vicinity Map



Data Sources: Richland One, Richland County GIS  
Map Created: March 2015, ATC.

CropperGIS

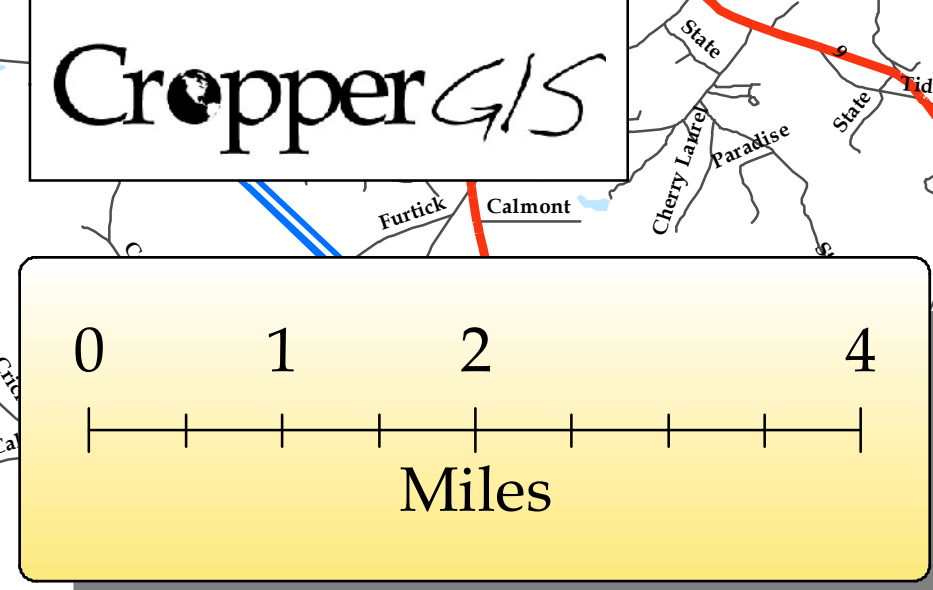
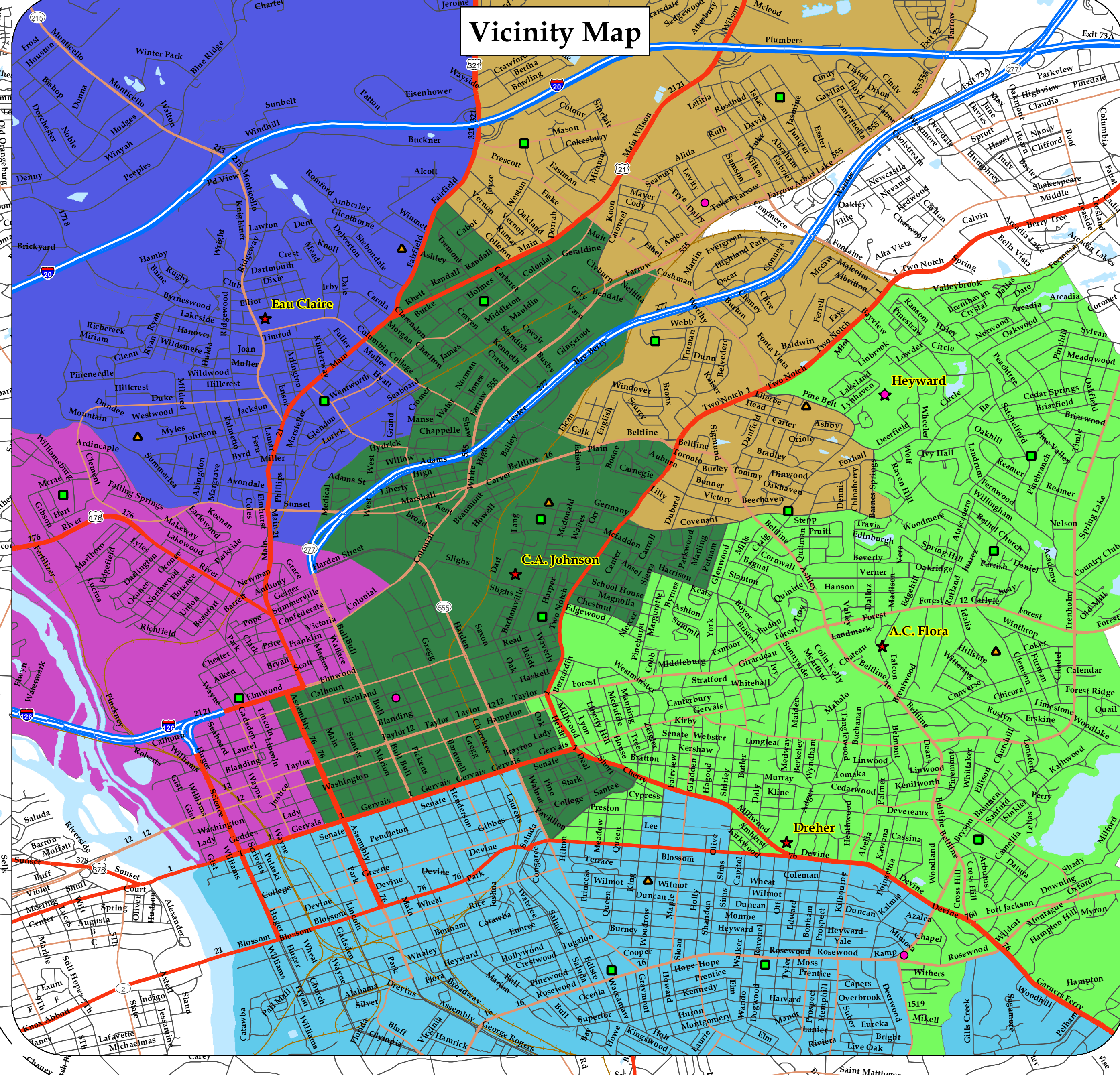
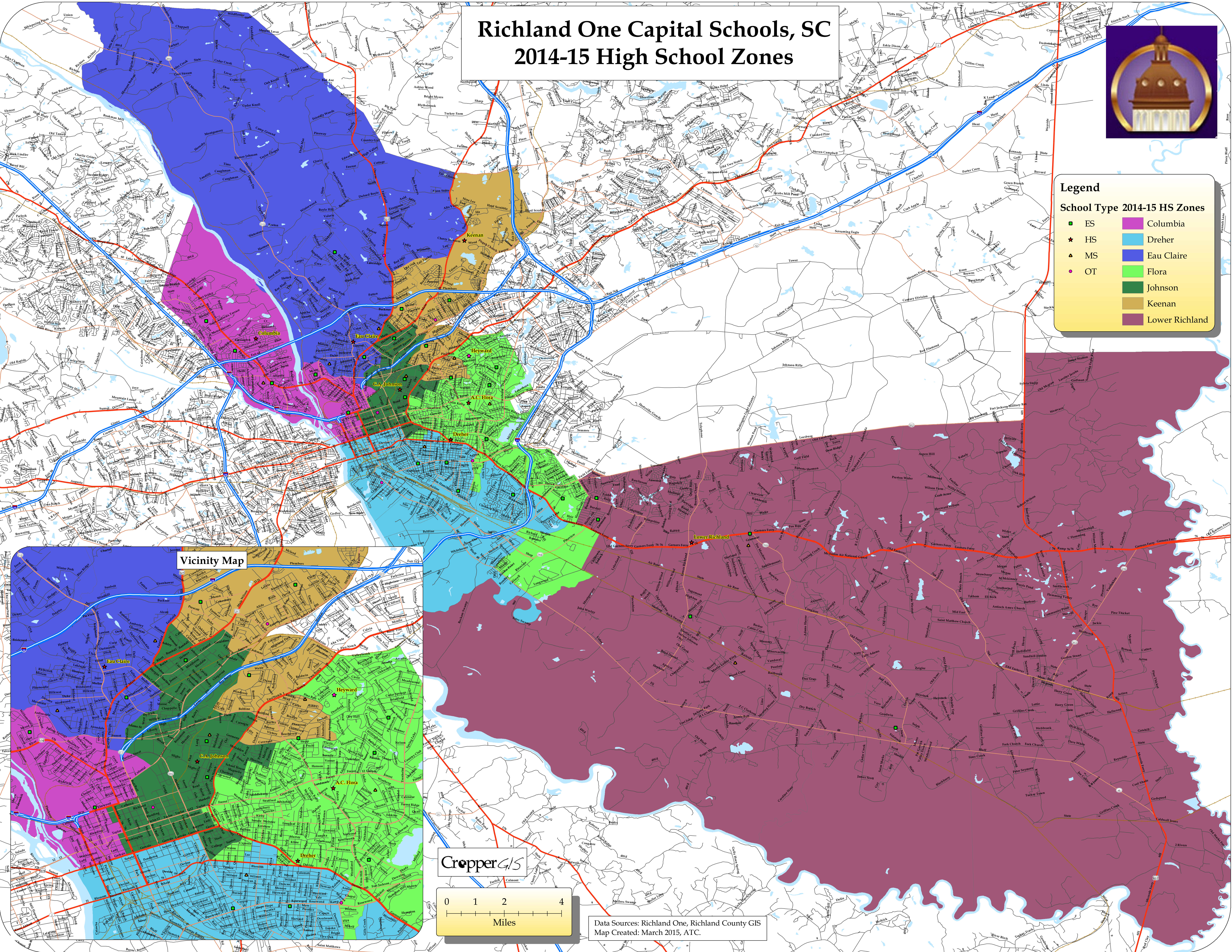
# Richland One Capital Schools, SC 2014-15 High School Zones



**Legend**

**School Type 2014-15 HS Zones**

- ES
- ★ HS
- ▲ MS
- OT
- Columbia
- Dreher
- Eau Claire
- Flora
- Johnson
- Keenan
- Lower Richland



Data Sources: Richland One, Richland County GIS  
Map Created: March 2015, ATC.