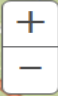


Overview of Cropper Map

Map Components:

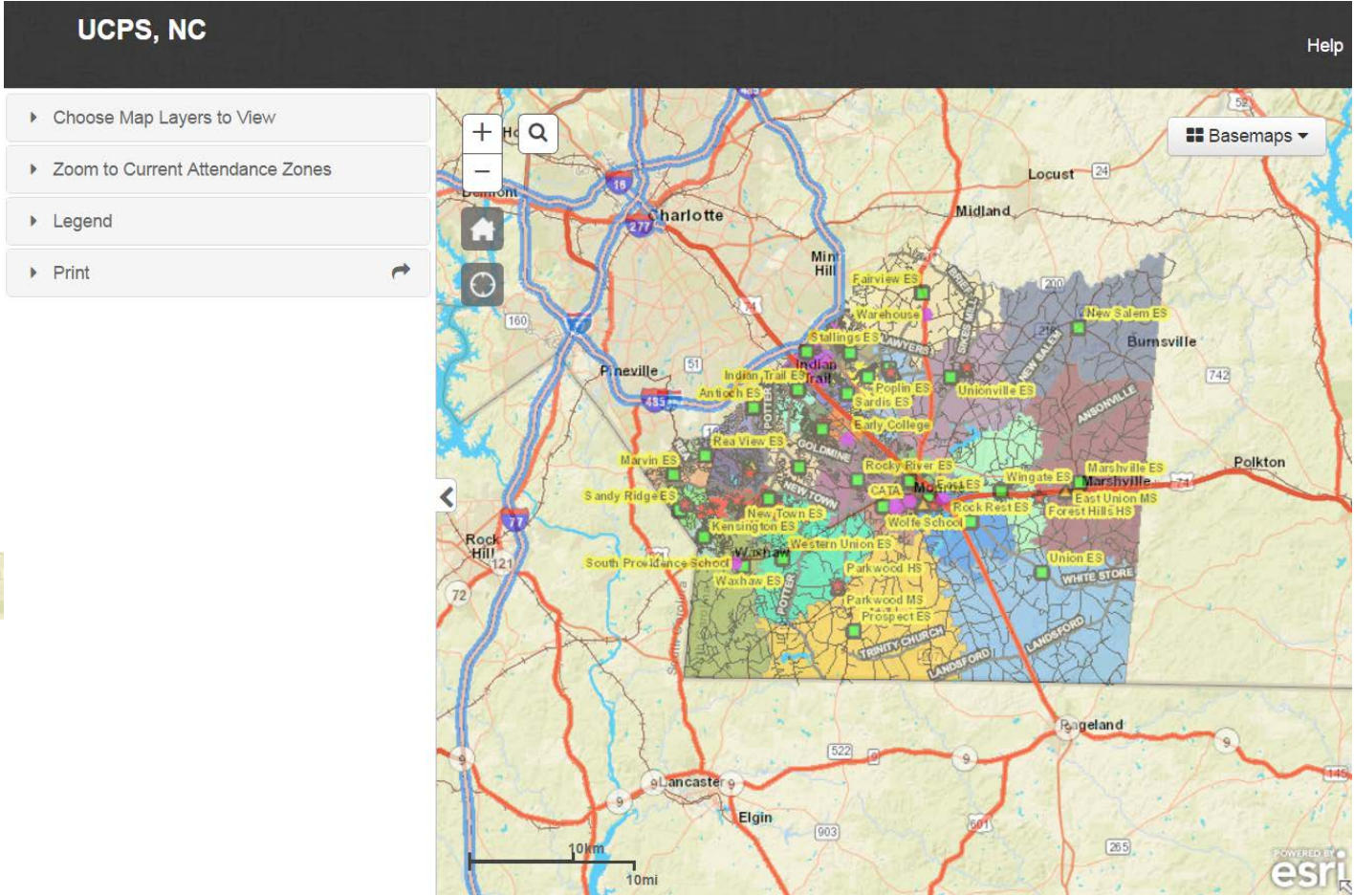
- Menu Options** Use these menus to interact with the map.
 - View School Zones:** Use this menu to choose which school zone map to view.
 - Zoom to School Zones:** Use this menu to zoom to a school zone.
 - Legend:** This shows the active layers that are turned on within the map.
 - Print:** Use this menu to format and print a map with a title.
- Find Address:** Use this to search for an address and to determine school options.

- Map Navigation:** This is used to zoom in & out. If your mouse has a scroll wheel this will also zoom in and out. If you click on the map screen and drag the mouse it will pan the map.
 

- Basemaps:** Use this dropdown list to determine which basemap to have on in the background.

- Home Button:** Click  on this button to zoom the map out to the district's full extent.

- GPS Location:** Click on this  to determine your current location.



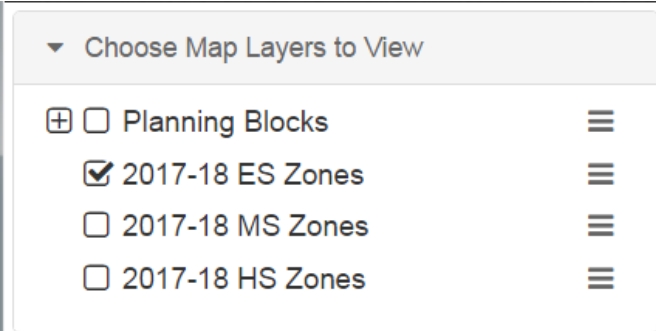
How to choose school zones to view:

Step 1: Click on the *View School Zones* dropdown within the Menu Options to select which School Zones to turn on.

Step 2: Click the check mark next to each option to turn on and off the school zone maps.

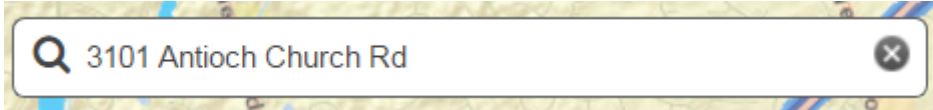
Step 3: Click on radio menu next to each option to change the map background.

Note: High Schools of Choice and Elementary Magnet Schools shown on the map do not have a defined school zone (attendance boundary).

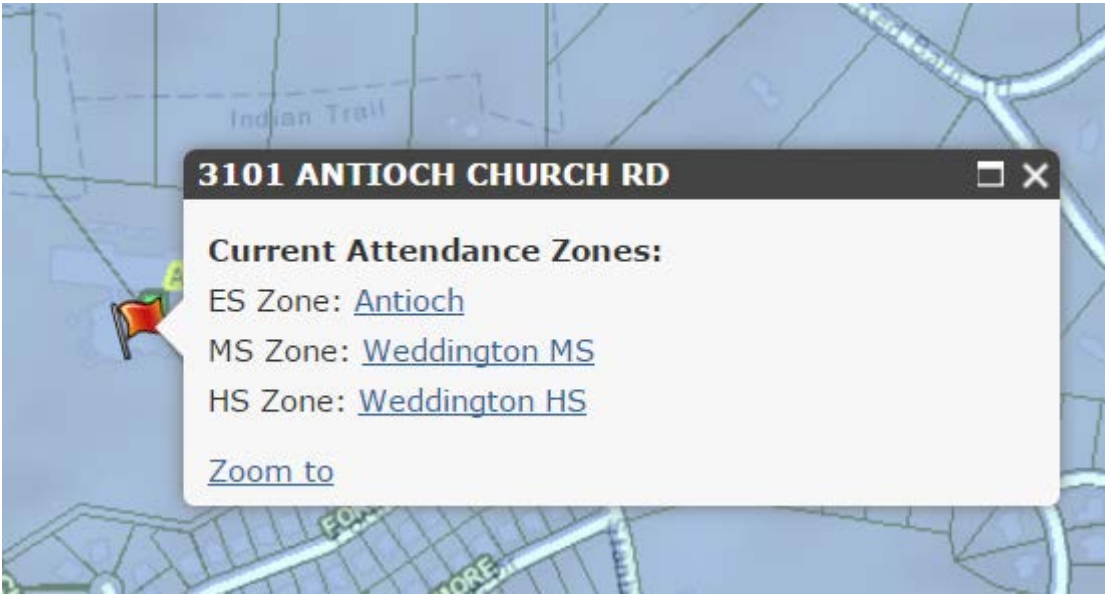


How to find an address and determine school options:

Step 1: Within the find address bar enter an address and hit enter.

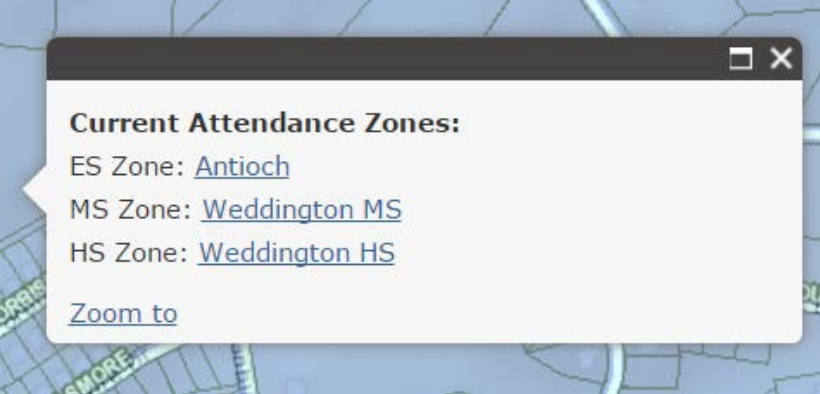


Step 2: If an address match is found the map will zoom in on the address and a popup menu will show the school options



How to Identify School Options by Clicking on the Map

Step 1: Click anywhere on the map within the district and a window will pop up with that location’s school options.

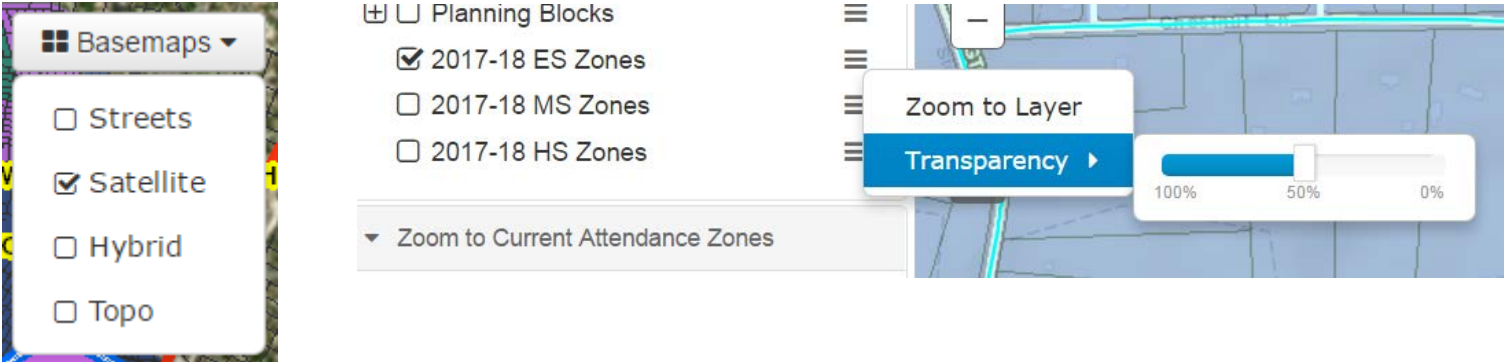


How to turn on Satellite Imagery and Toggle School Zone Transparency

Step 1: Within the View School Zones menu bar click on the three lines next to each school zone option. ≡

Step2: Click on Transparency and use the toggle bar to adjust the level of transparency.

Step 3: Click on Basemaps in the right hand corner of the map and check Satellite.



How to use Legend to determine which layers are active.

Step 1: Click on the **Legend** tool to expand the active layers that are being displayed on the map. If a student layer is turned on this will show up at the top of the legend.

How to design a printable map:

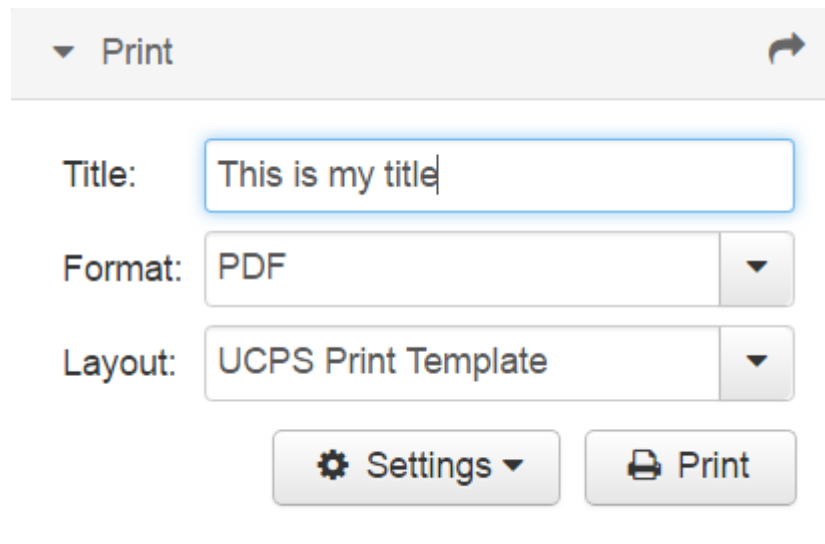
Step 1: Click on the “**Print**” menu

Step 2: Enter a map title in the space provided

Step 3. Select which format you would like.

Step 4. Click the Print button and wait for the print to complete.

Step 5. Double click on the output name to open the exported map.



The screenshot shows a 'Print' menu interface. At the top, there is a 'Print' button with a dropdown arrow and a refresh icon. Below this, there are three input fields: 'Title:' with the text 'This is my title', 'Format:' with 'PDF' selected, and 'Layout:' with 'UCPS Print Template' selected. At the bottom, there are two buttons: 'Settings' with a gear icon and a dropdown arrow, and 'Print' with a printer icon.