



# Wayne County Public Schools, NC Realignment Study 2020

## Options Statistics

Revised: 07/18/2019

### Enrollment Statistics Assumptions

The following document contains a series of tables and maps that depict statistics for current schools and boundaries, as well as redistricting options that are being evaluated. This information will help inform all committee members on how schools could be potentially impacted as a result of potential redistricting adjustments, along with a comparison to current school information

When estimating enrollment for the redistricting options, a series of assumptions were made. These assumptions help to ensure that special programs are not compromised by any redistricting adjustment, and that actual enrollments will materialize as close to the estimates as possible. The following assumptions were made:

**Option 1:**

1. No changes to grade configurations

**Options 2 and 3:**

1. The grade configuration for the Carver Heights ES and North Drive ES pairing is changed to K-1<sup>st</sup> at North Drive ES, and 2<sup>nd</sup> - 4<sup>th</sup> at Carver Heights ES.
2. Dillard MS grade configuration changes to 5-8th
3. Rosewood ES grade configuration changes to K-4<sup>th</sup>.
4. Rosewood MS grade configuration changes to 5-8th

**Option 4:**

1. Meadowlane ES joins the North Drive ES and Carver Heights ES pairing.
2. The K-1<sup>st</sup> grade students would be at Meadowlane ES, the 2<sup>nd</sup>-3<sup>rd</sup> grade students would be at Carver Heights ES, and the 4<sup>th</sup>-5<sup>th</sup> grade students would be at North Drive ES.
3. Greenwood MS grade configuration changes to 5-8th
4. Rosewood ES grade configuration changes to K-4<sup>th</sup>.
5. Rosewood MS grade configuration changes to 5-8<sup>th</sup>

**Option 5:**

1. North Drive ES and Tommy's Road ES are paired in this option. K-1<sup>st</sup> grade students would be at North Drive ES, and 2<sup>nd</sup>-5<sup>th</sup> grade students would be Tommy's Road ES.
2. Carver Heights ES and Meadowlane ES are paired in this option. K-1<sup>st</sup> grade students would be at Carver Heights ES, and 2<sup>nd</sup>-5<sup>th</sup> grade students would be Meadowlane ES.
3. Greenwood MS grade configuration changes to 5-8th
4. Rosewood ES grade configuration changes to K-4<sup>th</sup>.
5. Rosewood MS grade configuration changes to 5-8th

**Elementary School Options Estimated Enrollment Statistics**

Elementary School	2018-19 Capacity	Total Enrolled	DRAFT Option 1 Estimated Enrollment	DRAFT Option 2 Estimated Enrollment	DRAFT Option 3 Estimated Enrollment	DRAFT Option 4 Estimated Enrollment	DRAFT Option 5 Estimated Enrollment
Brogden Primary School	750	789	789	729	789	789	789
Carver Elementary School	518	563	563	563	563	563	563
Carver Heights Elementary School	586	450	465	503	489	570	495
Eastern Wayne Elementary School	617	664	664	664	664	664	664
Fremont Elementary School	308	246	333	315	336	336	336
Grantham Elementary School	396	445	445	424	445	445	445
Meadowlane Elementary School	723	561	658	658	707	643	820
North Drive Elementary School	498	597	619	403	368	477	382
Northeast Elementary School	585	685	632	630	630	630	630
Northwest Elementary School	667	752	718	738	717	717	717
Rosewood Elementary School	590	635	635	595	514	514	514
Spring Creek Elementary School	726	831	734	734	734	831	831
Tommy's Road Elementary School	603	673	636	673	673	673	666
<b>Total</b>	<b>7567</b>	<b>7891</b>	<b>7891</b>	<b>7629</b>	<b>7629</b>	<b>7852</b>	<b>7852</b>

Elementary School	2018-19 Capacity	Enrolled Utilization	DRAFT Option 1 Utilization	DRAFT Option 2 Utilization	DRAFT Option 3 Utilization	DRAFT Option 4 Utilization	DRAFT Option 5 Utilization
Brogden Primary School	750	105%	105%	97%	105%	105%	105%
Carver Elementary School	518	109%	109%	109%	109%	109%	109%
Carver Heights Elementary School	586	77%	79%	86%	83%	97%	84%
Eastern Wayne Elementary School	617	108%	108%	108%	108%	108%	108%
Fremont Elementary School	308	80%	108%	102%	109%	109%	109%
Grantham Elementary School	396	112%	112%	107%	112%	112%	112%
Meadowlane Elementary School	723	78%	91%	91%	98%	89%	113%
North Drive Elementary School	498	120%	124%	81%	74%	96%	77%
Northeast Elementary School	585	117%	108%	108%	108%	108%	108%
Northwest Elementary School	667	113%	108%	111%	107%	107%	107%
Rosewood Elementary School	590	108%	108%	101%	87%	87%	87%
Spring Creek Elementary School	726	114%	101%	101%	101%	114%	114%
Tommy's Road Elementary School	603	112%	105%	112%	112%	112%	110%
<b>Total</b>	<b>7567</b>	<b>104%</b>	<b>104%</b>	<b>101%</b>	<b>101%</b>	<b>104%</b>	<b>104%</b>

Student counts are based on the 10/08/2018 WCPS student database.

The estimated enrollment is calculated by adding the total number students within each new DRAFT option zone that “Live and Attend In” for the grade configuration for that school, plus the students that “Live Out and Attend In” a 2018-19 school, during the 2018-19 school year, plus students attending that school that live outside of the district, plus those students that could not be located in the GIS.

**Elementary School Options Demographics Statistics**

Elementary School	Enrolled				
	Percent Black	Percent White	Percent Other	Percent Non-Hispanic	Percent Hispanic
Brogden Primary School	34.3%	10.4%	55.3%	46.8%	53.2%
Carver Elementary School	40.5%	18.8%	40.7%	62.3%	37.7%
Carver Heights Elementary School	91.3%	3.1%	5.6%	96.2%	3.8%
Eastern Wayne Elementary School	45.2%	26.8%	28.0%	77.9%	22.1%
Fremont Elementary School	19.1%	59.8%	21.1%	85.8%	14.2%
Grantham Elementary School	18.7%	54.8%	26.5%	76.0%	24.0%
Meadowlane Elementary School	36.0%	34.8%	29.2%	83.6%	16.4%
North Drive Elementary School	88.4%	3.2%	8.4%	94.3%	5.7%
Northeast Elementary School	22.3%	54.3%	23.4%	85.5%	14.5%
Northwest Elementary School	20.1%	62.0%	18.0%	88.7%	11.3%
Rosewood Elementary School	10.9%	65.2%	23.9%	86.3%	13.7%
Spring Creek Elementary School	10.7%	27.7%	61.6%	40.6%	59.4%
Tommy's Road Elementary School	48.3%	31.9%	19.8%	89.5%	10.5%
<b>Total</b>	<b>36.2%</b>	<b>34.0%</b>	<b>29.8%</b>	<b>75.9%</b>	<b>24.1%</b>

Elementary School	Option 1				
	Percent Black	Percent White	Percent Other	Percent Non-Hispanic	Percent Hispanic
Brogden Primary School	34.3%	10.4%	55.3%	46.8%	53.2%
Carver Elementary School	40.5%	18.8%	40.7%	62.3%	37.7%
Carver Heights Elementary School	89.0%	5.2%	6.0%	96.1%	3.9%
Eastern Wayne Elementary School	45.2%	26.8%	28.0%	77.9%	22.1%
Fremont Elementary School	19.5%	58.3%	22.2%	83.8%	16.2%
Grantham Elementary School	18.7%	54.8%	26.5%	76.0%	24.0%
Meadowlane Elementary School	34.3%	33.4%	32.2%	79.0%	21.0%
North Drive Elementary School	85.9%	5.7%	8.4%	94.3%	5.7%
Northeast Elementary School	22.2%	55.4%	22.5%	86.9%	13.1%
Northwest Elementary School	20.3%	61.4%	18.2%	88.6%	11.4%
Rosewood Elementary School	10.9%	65.2%	23.9%	86.3%	13.7%
Spring Creek Elementary School	8.9%	27.9%	63.2%	39.0%	61.0%
Tommy's Road Elementary School	50.0%	29.7%	20.3%	89.2%	10.8%
<b>Total</b>	<b>36.2%</b>	<b>34.0%</b>	<b>29.8%</b>	<b>75.9%</b>	<b>24.1%</b>

Student counts are based on the 10/08/2018 WCPS student database.

The estimated enrollment is calculated by adding the total number students within each new DRAFT option zone that "Live and Attend In" for the grade configuration for that school, plus the students that "Live Out and Attend In" a 2018-19 school, during the 2018-19 school year, plus students attending that school that live outside of the district, plus those students that could not be located in the GIS.

**Elementary School Options Demographics Statistics (Continued)**

Elementary School	Option 2				
	Percent Black	Percent White	Percent Other	Percent Non-Hispanic	Percent Hispanic
Brogden Primary School	34.8%	10.4%	54.7%	47.5%	52.5%
Carver Elementary School	40.5%	18.8%	40.7%	62.3%	37.7%
Carver Heights Elementary School	90.1%	3.6%	6.4%	95.2%	4.8%
Eastern Wayne Elementary School	45.2%	26.8%	28.0%	77.9%	22.1%
Fremont Elementary School	23.5%	57.1%	19.4%	86.0%	14.0%
Grantham Elementary School	19.1%	53.3%	27.6%	74.8%	25.2%
Meadowlane Elementary School	34.3%	33.4%	32.2%	79.0%	21.0%
North Drive Elementary School	89.3%	2.2%	8.4%	94.8%	5.2%
Northeast Elementary School	20.3%	55.7%	24.0%	85.7%	14.3%
Northwest Elementary School	20.2%	61.5%	18.3%	88.5%	11.5%
Rosewood Elementary School	12.3%	60.2%	27.6%	81.5%	18.5%
Spring Creek Elementary School	8.9%	27.9%	63.2%	39.0%	61.0%
Tommy's Road Elementary School	48.3%	31.9%	19.8%	89.5%	10.5%
<b>Total</b>	<b>35.6%</b>	<b>34.0%</b>	<b>30.4%</b>	<b>75.4%</b>	<b>24.6%</b>

Elementary School	Option 3				
	Percent Black	Percent White	Percent Other	Percent Non-Hispanic	Percent Hispanic
Brogden Primary School	34.3%	10.4%	55.3%	46.8%	53.2%
Carver Elementary School	40.5%	18.8%	40.7%	62.3%	37.7%
Carver Heights Elementary School	85.3%	5.9%	8.8%	94.7%	5.3%
Eastern Wayne Elementary School	45.2%	26.8%	28.0%	77.9%	22.1%
Fremont Elementary School	23.2%	57.4%	19.3%	86.0%	14.0%
Grantham Elementary School	18.7%	54.8%	26.5%	76.0%	24.0%
Meadowlane Elementary School	43.6%	28.7%	27.7%	80.5%	19.5%
North Drive Elementary School	85.3%	4.1%	10.6%	94.8%	5.2%
Northeast Elementary School	20.3%	55.7%	24.0%	85.7%	14.3%
Northwest Elementary School	20.2%	61.5%	18.3%	88.6%	11.4%
Rosewood Elementary School	10.5%	65.0%	24.5%	85.8%	14.2%
Spring Creek Elementary School	8.9%	27.9%	63.2%	39.0%	61.0%
Tommy's Road Elementary School	48.3%	31.9%	19.8%	89.5%	10.5%
<b>Total</b>	<b>35.6%</b>	<b>34.0%</b>	<b>30.4%</b>	<b>75.4%</b>	<b>24.6%</b>

Student counts are based on the 10/08/2018 WCPS student database.

The estimated enrollment is calculated by adding the total number students within each new DRAFT option zone that “Live and Attend In” for the grade configuration for that school, plus the students that “Live Out and Attend In” a 2018-19 school, during the 2018-19 school year, plus students attending that school that live outside of the district, plus those students that could not be located in the GIS.

**Elementary School Options Demographics Statistics (Continued)**

Elementary School	Option 4				
	Percent Black	Percent White	Percent Other	Percent Non-Hispanic	Percent Hispanic
Brogden Primary School	34.3%	10.4%	55.3%	46.8%	53.2%
Carver Elementary School	40.5%	18.8%	40.7%	62.3%	37.7%
Carver Heights Elementary School	69.3%	14.6%	16.1%	89.8%	10.2%
Eastern Wayne Elementary School	45.2%	26.8%	28.0%	77.9%	22.1%
Fremont Elementary School	23.2%	57.4%	19.3%	86.0%	14.0%
Grantham Elementary School	18.7%	54.8%	26.5%	76.0%	24.0%
Meadowlane Elementary School	66.9%	16.5%	16.6%	90.7%	9.3%
North Drive Elementary School	74.6%	13.4%	11.9%	92.7%	7.3%
Northeast Elementary School	20.3%	55.7%	24.0%	85.7%	14.3%
Northwest Elementary School	20.2%	61.5%	18.3%	88.6%	11.4%
Rosewood Elementary School	10.5%	65.0%	24.5%	85.8%	14.2%
Spring Creek Elementary School	10.7%	27.7%	61.6%	40.6%	59.4%
Tommy's Road Elementary School	48.3%	31.9%	19.8%	89.5%	10.5%
<b>Total</b>	<b>36.7%</b>	<b>33.5%</b>	<b>29.8%</b>	<b>75.9%</b>	<b>24.1%</b>

Elementary School	Option 5				
	Percent Black	Percent White	Percent Other	Percent Non-Hispanic	Percent Hispanic
Brogden Primary School	34.3%	10.4%	55.3%	46.8%	53.2%
Carver Elementary School	40.5%	18.8%	40.7%	62.3%	37.7%
Carver Heights Elementary School	61.0%	20.4%	18.6%	89.5%	10.5%
Eastern Wayne Elementary School	45.2%	26.8%	28.0%	77.9%	22.1%
Fremont Elementary School	23.2%	57.4%	19.3%	86.0%	14.0%
Grantham Elementary School	18.7%	54.8%	26.5%	76.0%	24.0%
Meadowlane Elementary School	67.4%	16.7%	15.9%	90.4%	9.6%
North Drive Elementary School	61.0%	19.9%	19.1%	89.8%	10.2%
Northeast Elementary School	20.3%	55.7%	24.0%	85.7%	14.3%
Northwest Elementary School	20.2%	61.5%	18.3%	88.6%	11.4%
Rosewood Elementary School	10.5%	65.0%	24.5%	85.8%	14.2%
Spring Creek Elementary School	10.7%	27.7%	61.6%	40.6%	59.4%
Tommy's Road Elementary School	62.8%	23.1%	14.1%	91.9%	8.1%
<b>Total</b>	<b>36.7%</b>	<b>33.5%</b>	<b>29.8%</b>	<b>75.9%</b>	<b>24.1%</b>

Student counts are based on the 10/08/2018 WCPS student database.

The estimated enrollment is calculated by adding the total number students within each new DRAFT option zone that “Live and Attend In” for the grade configuration for that school, plus the students that “Live Out and Attend In” a 2018-19 school, during the 2018-19 school year, plus students attending that school that live outside of the district, plus those students that could not be located in the GIS.

**Elementary School Option Impacts**

Option	Total K-5th Live-In Students Impacted
Option 1	221
Option 2	501
Option 3	659
Option 4	281
Option 5	281

The Impact of Option 2 also includes 254 5th grade students from Rosewood ES and Carver Heights ES that will change from Elementary School to Middle School

The Impact of Option 3 also includes 247 5th grade students from Rosewood ES and Carver Heights ES that will change from Elementary School to Middle School

The Impact of Options 4 and 5 also includes 73 5th grade students from Meadowlane ES change from Middle School to Elementary School, and 118 students from Rosewood ES that will change from Elementary School to Middle School

ES Zone 2019-20	DRAFT Option 1 ES Zone	Total Grade Config Live and Attend In Students
Brogden	Brogden	769
Carver	Carver	549
Eastern Wayne	Eastern Wayne	596
Fremont Stars	Fremont Stars	174
Grantham	Grantham	421
Meadow Lane	Meadow Lane	461
North Drive/Carver Heights	North Drive/Carver Heights	1028
Northeast	Fremont Stars	53
Northeast	Northeast	592
Northwest	Fremont Stars	34
Northwest	Northwest	690
Rosewood	Rosewood	592
Spring Creek	Meadow Lane	97
Spring Creek	Spring Creek	685
Tommy's Road	North Drive/Carver Heights	37
Tommy's Road	Tommy's Road	482

ES Zone 2019-20	DRAFT Option 2 ES Zone	Total Grade Config Live and Attend In Students
Brogden	Brogden	709
Brogden	Rosewood (K-4)	60
Carver	Carver	549
Eastern Wayne	Eastern Wayne	596
Fremont Stars	Fremont Stars	174
Grantham	Grantham	400
Grantham	Rosewood (K-4)	21
Meadow Lane	Meadow Lane	461
North Drive/Carver Heights	North Drive/Carver Heights (K-4)	892
Northeast	Fremont Stars	55
Northeast	Northeast	590
Northwest	Fremont Stars	14
Northwest	Northwest	710
Rosewood	Rosewood (K-4)	474
Spring Creek	Meadow Lane	97
Spring Creek	Spring Creek	685
Tommy's Road	Tommy's Road	519

ES Zone 2019-20	DRAFT Option 3 ES Zone	Total Grade Config Live and Attend In Students
Brogden	Brogden	769
Carver	Carver	549
Eastern Wayne	Eastern Wayne	596
Fremont Stars	Fremont Stars	174
Grantham	Grantham	421
Meadow Lane	Meadow Lane	373
Meadow Lane	North Drive/Carver Heights (K-4)	88
North Drive/Carver Heights	Meadow Lane	137
North Drive/Carver Heights	North Drive/Carver Heights (K-4)	753
Northeast	Fremont Stars	55
Northeast	Northeast	590
Northwest	Fremont Stars	35
Northwest	Northwest	689
Rosewood	Rosewood (K-4)	474
Spring Creek	Meadow Lane	97
Spring Creek	Spring Creek	685
Tommy's Road	Tommy's Road	519

ES Zone 2019-20	DRAFT Option 4 ES Zone	Total Grade Config Live and Attend In Students
Brogden	Brogden	769
Carver	Carver	549
Eastern Wayne	Eastern Wayne	596
Fremont Stars	Fremont Stars	174
Grantham	Grantham	421
Meadow Lane	North Drive/Carver Heights/Meadow Lane	534
North Drive/Carver Heights	North Drive/Carver Heights/Meadow Lane	1028
Northeast	Fremont Stars	55
Northeast	Northeast	590
Northwest	Fremont Stars	35
Northwest	Northwest	689
Rosewood	Rosewood (K-4)	474
Spring Creek	Spring Creek	782
Tommy's Road	Tommy's Road	519

**Elementary School Option Impacts**

ES Zone 2019-20	DRAFT Option 5 ES Zone	Total Grade Config Live and Attend In Students
Brogden	Brogden	769
Carver	Carver	549
Eastern Wayne	Eastern Wayne	596
Fremont Stars	Fremont Stars	174
Grantham	Grantham	421
Meadow Lane	Carver Heights/Meadowlane	534
North Drive/Carver Heights	Carver Heights/Meadowlane	663
North Drive/Carver Heights	North Drive/Tommy's Road	365
Northeast	Fremont Stars	55
Northeast	Northeast	590
Northwest	Fremont Stars	35
Northwest	Northwest	689
Rosewood	Rosewood (K-4)	474
Spring Creek	Spring Creek	782
Tommy's Road	North Drive/Tommy's Road	519



**ES to MS Feeder Pattern**

2018-19 ES Zone	2018-19 MS Zone	Total K-5th Live and Attend-In	ES Attendance
Brogden	Brogden	960	100%
Carver	Grantham	1	0%
Carver	Mount Olive	646	100%
Eastern Wayne	Eastern Wayne	596	100%
Fremont Stars	Norwayne	174	100%
Grantham	Grantham	524	100%
Meadow Lane	Greenwood	534	100%
North Drive/Carver Heights	Dillard	1028	100%
Northeast	Norwayne	645	100%
Northwest	Norwayne	724	100%
Rosewood	Rosewood	592	100%
Spring Creek	Greenwood	5	1%
Spring Creek	Spring Creek	923	99%
Tommy's Road	Eastern Wayne	337	65%
Tommy's Road	Norwayne	182	35%

DRAFT Option 1 ES	DRAFT Option 1 MS	Total K-5th Live and Attend-In	ES Attendance
Brogden	Brogden	960	100%
Carver	Mount Olive	647	100%
Eastern Wayne	Eastern Wayne	596	100%
Fremont Stars	Norwayne	261	100%
Grantham	Grantham	524	100%
Meadow Lane	Greenwood	652	100%
North Drive/Carver Heights	Dillard	1065	100%
Northeast	Norwayne	592	100%
Northwest	Norwayne	690	100%
Rosewood	Rosewood	592	100%
Spring Creek	Spring Creek	810	100%
Tommy's Road	Eastern Wayne	337	70%
Tommy's Road	Norwayne	145	30%

DRAFT Option 2 ES	DRAFT Option 2 MS	Total K-5th Live and Attend-In	ES Attendance
Brogden	Brogden	885	100%
Carver	Mount Olive	647	100%
Eastern Wayne	Eastern Wayne	596	100%
Fremont Stars	Norwayne	243	100%
Grantham	Grantham	495	100%
Meadow Lane	Greenwood	652	100%
North Drive/Carver Heights (K-4)	Dillard (5-8)	884	86%
North Drive/Carver Heights (K-4)	Greenwood	144	14%
Northeast	Norwayne	590	100%
Northwest	Norwayne	710	100%
Rosewood (K-4)	Rosewood (5-8)	696	100%
Spring Creek	Spring Creek	810	100%
Tommy's Road	Eastern Wayne	337	65%
Tommy's Road	Norwayne	182	35%

DRAFT Option 3 ES	DRAFT Option 3 MS	Total K-5th Live and Attend-In	ES Attendance
Brogden	Brogden	960	100%
Carver	Mount Olive	647	100%
Eastern Wayne	Eastern Wayne	596	100%
Fremont Stars	Norwayne	264	100%
Grantham	Grantham	524	100%
Meadow Lane	Greenwood	691	100%
North Drive/Carver Heights (K-4)	Dillard (5-8)	989	100%
Northeast	Norwayne	590	100%
Northwest	Norwayne	689	100%
Rosewood (K-4)	Rosewood (5-8)	592	100%
Spring Creek	Spring Creek	810	100%
Tommy's Road	Eastern Wayne	337	65%
Tommy's Road	Norwayne	182	35%

DRAFT Option 4 ES	DRAFT Option 4 MS	Total K-5th Live and Attend-In	ES Attendance
Brogden	Brogden	960	100%
Carver	Mount Olive	647	100%
Eastern Wayne	Eastern Wayne	596	100%
Fremont Stars	Norwayne	264	100%
Grantham	Grantham	524	100%
North Drive/Carver Heights/Meadow Lane	Dillard	1028	66%
North Drive/Carver Heights/Meadow Lane	Greenwood	534	34%
Northeast	Norwayne	590	100%
Northwest	Norwayne	689	100%
Rosewood (K-4)	Rosewood (5-8)	592	100%
Spring Creek	Spring Creek	928	100%
Tommy's Road	Dillard	182	35%
Tommy's Road	Greenwood	337	65%

DRAFT Option 5 ES	DRAFT Option 5 MS	Total K-5th Live and Attend-In	ES Attendance
Brogden	Brogden	960	100%
Carver	Mount Olive	647	100%
Carver Heights/Meadowlane	Dillard	663	55%
Carver Heights/Meadowlane	Greenwood	534	45%
Eastern Wayne	Eastern Wayne	596	100%
Fremont Stars	Norwayne	264	100%
Grantham	Grantham	524	100%
North Drive/Tommy's Road	Dillard	547	62%
North Drive/Tommy's Road	Greenwood	337	38%
Northeast	Eastern Wayne	248	42%
Northeast	Norwayne	342	58%
Northwest	Norwayne	689	100%
Rosewood (K-4)	Rosewood (5-8)	592	100%
Spring Creek	Spring Creek	928	100%

**Middle School Options Estimated Enrollment Statistics**

Middle School	2018-19 Capacity	Total Enrolled	DRAFT Option 1 Estimated Enrollment	DRAFT Option 2 Estimated Enrollment	DRAFT Option 3 Estimated Enrollment	DRAFT Option 4 Estimated Enrollment	DRAFT Option 5 Estimated Enrollment
Brogden Middle School	672	570	570	532	570	570	570
Dillard Middle School	501	366	380	417	519	424	493
Eastern Wayne Middle School	498	537	537	537	537	389	480
Grantham Middle School	423	394	392	374	392	392	392
Greenwood Middle School	563	392	466	556	454	458	458
Mount Olive Middle School	387	386	388	388	388	388	388
Norwayne Middle School	781	887	873	887	887	829	669
Rosewood Middle School	433	333	333	510	454	454	454
Spring Creek Middle School	564	660	586	586	586	660	660
<b>Total</b>	<b>4822</b>	<b>4525</b>	<b>4525</b>	<b>4787</b>	<b>4787</b>	<b>4564</b>	<b>4564</b>

Middle School	2018-19 Capacity	Enrolled Utilization	DRAFT Option 1 Utilization	DRAFT Option 2 Utilization	DRAFT Option 3 Utilization	DRAFT Option 4 Utilization	DRAFT Option 5 Utilization
Brogden Middle School	672	85%	85%	79%	85%	85%	85%
Dillard Middle School	501	73%	76%	83%	104%	85%	98%
Eastern Wayne Middle School	498	108%	108%	108%	108%	78%	96%
Grantham Middle School	423	93%	93%	88%	93%	93%	93%
Greenwood Middle School	563	70%	83%	99%	81%	81%	81%
Mount Olive Middle School	387	100%	100%	100%	100%	100%	100%
Norwayne Middle School	781	114%	112%	114%	114%	106%	86%
Rosewood Middle School	433	77%	77%	118%	105%	105%	105%
Spring Creek Middle School	564	117%	104%	104%	104%	117%	117%
<b>Total</b>	<b>4822</b>	<b>94%</b>	<b>94%</b>	<b>99%</b>	<b>99%</b>	<b>95%</b>	<b>95%</b>

Student counts are based on the 10/08/2018 WCPS student database.

The estimated enrollment is calculated by adding the total number students within each new DRAFT option zone that “Live and Attend In” for the grade configuration for that school, plus the students that “Live Out and Attend In” a 2018-19 school, during the 2018-19 school year, plus students attending that school that live outside of the district, plus those students that could not be located in the GIS.

**Middle School Options Demographics Statistics**

Middle School	Enrolled				
	Percent Black	Percent White	Percent Other	Percent Non-Hispanic	Percent Hispanic
Brogden Middle School	34.7%	11.6%	53.7%	49.1%	50.9%
Dillard Middle School	87.7%	2.2%	10.1%	92.3%	7.7%
Eastern Wayne Middle School	55.9%	24.8%	19.4%	87.7%	12.3%
Grantham Middle School	18.0%	54.8%	27.2%	74.9%	25.1%
Greenwood Middle School	53.6%	21.9%	24.5%	82.4%	17.6%
Mount Olive Middle School	34.7%	23.1%	42.2%	61.4%	38.6%
Norwayne Middle School	22.7%	56.8%	20.5%	87.3%	12.7%
Rosewood Middle School	13.8%	64.6%	21.6%	85.3%	14.7%
Spring Creek Middle School	11.8%	32.6%	55.6%	47.6%	52.4%
<b>Total</b>	<b>34.5%</b>	<b>33.9%</b>	<b>31.7%</b>	<b>73.3%</b>	<b>26.7%</b>

Middle School	Option 1				
	Percent Black	Percent White	Percent Other	Percent Non-Hispanic	Percent Hispanic
Brogden Middle School	34.7%	11.6%	53.7%	48.1%	51.9%
Dillard Middle School	85.5%	4.2%	10.3%	92.1%	7.9%
Eastern Wayne Middle School	55.9%	24.8%	19.4%	76.7%	23.3%
Grantham Middle School	18.1%	54.1%	27.8%	67.6%	32.4%
Greenwood Middle School	48.5%	21.5%	30.0%	56.2%	43.8%
Mount Olive Middle School	34.5%	21.9%	43.6%	56.2%	43.8%
Norwayne Middle School	22.6%	56.5%	21.0%	85.1%	14.9%
Rosewood Middle School	13.8%	64.0%	22.2%	76.6%	23.4%
Spring Creek Middle School	10.6%	33.6%	55.8%	42.2%	57.8%
<b>Total</b>	<b>34.5%</b>	<b>33.5%</b>	<b>32.1%</b>	<b>66.9%</b>	<b>33.1%</b>

Middle School	Option 2				
	Percent Black	Percent White	Percent Other	Percent Non-Hispanic	Percent Hispanic
Brogden Middle School	35.5%	12.2%	52.3%	49.6%	50.4%
Dillard Middle School	89.3%	2.7%	8.0%	92.7%	7.3%
Eastern Wayne Middle School	55.9%	24.8%	19.4%	76.7%	23.3%
Grantham Middle School	17.6%	53.2%	29.1%	66.0%	34.0%
Greenwood Middle School	51.8%	19.5%	28.7%	59.7%	40.3%
Mount Olive Middle School	34.5%	21.9%	43.6%	56.2%	43.8%
Norwayne Middle School	22.7%	56.5%	20.9%	85.2%	14.8%
Rosewood Middle School	14.7%	60.0%	25.3%	75.9%	24.1%
Spring Creek Middle School	10.6%	33.6%	55.8%	42.2%	57.8%
<b>Total</b>	<b>35.5%</b>	<b>33.4%</b>	<b>31.1%</b>	<b>68.1%</b>	<b>31.9%</b>

Student counts are based on the 10/08/2018 WCPS student database.

The estimated enrollment is calculated by adding the total number students within each new DRAFT option zone that “Live and Attend In” for the grade configuration for that school, plus the students that “Live Out and Attend In” a 2018-19 school, during the 2018-19 school year, plus students attending that school that live outside of the district, plus those students that could not be located in the GIS.

**Middle School Options Demographics Statistics (Continued)**

Middle School	Option 3				
	Percent Black	Percent White	Percent Other	Percent Non-Hispanic	Percent Hispanic
Brogden Middle School	34.7%	11.6%	53.7%	48.1%	51.9%
Dillard Middle School	86.5%	4.0%	9.4%	91.7%	8.3%
Eastern Wayne Middle School	55.9%	24.8%	19.4%	76.7%	23.3%
Grantham Middle School	18.1%	54.1%	27.8%	67.6%	32.4%
Greenwood Middle School	49.3%	20.5%	30.2%	55.7%	44.3%
Mount Olive Middle School	34.5%	21.9%	43.6%	56.2%	43.8%
Norwayne Middle School	22.7%	56.5%	20.9%	85.2%	14.8%
Rosewood Middle School	13.4%	64.3%	22.2%	79.1%	20.9%
Spring Creek Middle School	10.6%	33.6%	55.8%	42.2%	57.8%
<b>Total</b>	<b>35.5%</b>	<b>33.4%</b>	<b>31.1%</b>	<b>68.1%</b>	<b>31.9%</b>

Middle School	Option 4				
	Percent Black	Percent White	Percent Other	Percent Non-Hispanic	Percent Hispanic
Brogden Middle School	34.7%	11.6%	53.7%	48.1%	51.9%
Dillard Middle School	79.2%	9.0%	11.8%	91.7%	8.3%
Eastern Wayne Middle School	52.2%	28.3%	19.5%	71.0%	29.0%
Grantham Middle School	18.1%	54.1%	27.8%	67.6%	32.4%
Greenwood Middle School	58.3%	17.9%	23.8%	65.5%	34.5%
Mount Olive Middle School	34.5%	21.9%	43.6%	56.2%	43.8%
Norwayne Middle School	22.4%	56.8%	20.7%	84.9%	15.1%
Rosewood Middle School	13.4%	64.3%	22.2%	79.1%	20.9%
Spring Creek Middle School	11.8%	32.3%	55.9%	42.7%	57.3%
<b>Total</b>	<b>33.6%</b>	<b>34.4%</b>	<b>32.0%</b>	<b>67.2%</b>	<b>32.8%</b>

Middle School	Option 5				
	Percent Black	Percent White	Percent Other	Percent Non-Hispanic	Percent Hispanic
Brogden Middle School	34.7%	11.6%	53.7%	48.1%	51.9%
Dillard Middle School	71.4%	16.0%	12.6%	91.1%	8.9%
Eastern Wayne Middle School	46.5%	34.8%	18.8%	74.8%	25.2%
Grantham Middle School	18.1%	54.1%	27.8%	67.6%	32.4%
Greenwood Middle School	58.3%	17.9%	23.8%	65.5%	34.5%
Mount Olive Middle School	34.5%	21.9%	43.6%	56.2%	43.8%
Norwayne Middle School	22.4%	55.8%	21.8%	83.9%	16.1%
Rosewood Middle School	13.4%	64.3%	22.2%	79.1%	20.9%
Spring Creek Middle School	11.8%	32.3%	55.9%	42.7%	57.3%
<b>Total</b>	<b>33.6%</b>	<b>34.4%</b>	<b>32.0%</b>	<b>67.2%</b>	<b>32.8%</b>

Student counts are based on the 10/08/2018 WCPS student database.

The estimated enrollment is calculated by adding the total number students within each new DRAFT option zone that “Live and Attend In” for the grade configuration for that school, plus the students that “Live Out and Attend In” a 2018-19 school, during the 2018-19 school year, plus students attending that school that live outside of the district, plus those students that could not be located in the GIS.

**Middle School Option Impacts**

Option	Total Grade Config Live and Attend In Students Impacted
Option 1	90
Option 2	443
Option 3	449
Option 4	399
Option 5	559

The Impact of Option 2 also includes 254 5th grade students from Rosewood ES and Carver Heights ES that will change from Elementary School to Middle School

The Impact of Option 3 also includes 247 5th grade students from Rosewood ES and Carver Heights ES that will change from Elementary School to Middle School

The Impact of Option 4 and 5 also includes 73 5th grade students from Meadowlane ES change from Middle School to Elementary School, and 118 students from Rosewood ES that will change from Elementary School to Middle School

MS Zone 2019-20	DRAFT Option 1 MS Zone	Total Grade Config Live and Attend In Students
Brogden	Brogden	562
Dillard	Dillard	365
Eastern Wayne	Eastern Wayne	474
Grantham	Grantham	361
Grantham	Mount Olive	2
Greenwood	Greenwood	270
Mount Olive	Mount Olive	358
Norwayne	Dillard	14
Norwayne	Norwayne	853
Rosewood	Rosewood	292
Spring Creek	Greenwood	74
Spring Creek	Spring Creek	540

MS Zone 2019-20	DRAFT Option 2 MS Zone	Total Grade Config Live and Attend In Students
Brogden	Brogden	524
Brogden	Rosewood (5-8)	38
Dillard	Dillard (5-8)	444
Dillard	Greenwood	57
Eastern Wayne	Eastern Wayne	474
Grantham	Grantham	343
Grantham	Mount Olive	2
Grantham	Rosewood (5-8)	18
Greenwood	Greenwood	270
Mount Olive	Mount Olive	358
Norwayne	Norwayne	867
Rosewood	Rosewood (5-8)	410
Spring Creek	Greenwood	74
Spring Creek	Spring Creek	540

MS Zone 2019-20	DRAFT Option 3 MS Zone	Total Grade Config Live and Attend In Students
Brogden	Brogden	562
Dillard	Dillard (5-8)	444
Dillard	Greenwood	57
Eastern Wayne	Eastern Wayne	474
Grantham	Grantham	361
Grantham	Mount Olive	2
Greenwood	Dillard (5-8)	69
Greenwood	Greenwood	201
Mount Olive	Mount Olive	358
Norwayne	Norwayne	867
Rosewood	Rosewood (5-8)	410
Spring Creek	Greenwood	74
Spring Creek	Spring Creek	540

MS Zone 2019-20	DRAFT Option 4 MS Zone	Total Grade Config Live and Attend In Students
Brogden	Brogden	562
Dillard	Dillard	365
Eastern Wayne	Eastern Wayne	326
Eastern Wayne	Greenwood	148
Grantham	Grantham	361
Grantham	Mount Olive	2
Greenwood	Greenwood	197
Mount Olive	Mount Olive	358
Norwayne	Dillard	58
Norwayne	Norwayne	809
Rosewood	Rosewood (5-8)	410
Spring Creek	Spring Creek	614

**Middle School Option Impacts (Continued)**

MS Zone 2019-20	DRAFT Option 5 MS Zone	Total Grade Config Live and Attend In Students
Brogden	Brogden	562
Dillard	Dillard	365
Eastern Wayne	Eastern Wayne	326
Eastern Wayne	Greenwood	148
Grantham	Grantham	361
Grantham	Mount Olive	2
Greenwood	Greenwood	197
Mount Olive	Mount Olive	358
Norwayne	Dillard	127
Norwayne	Eastern Wayne	91
Norwayne	Norwayne	649
Rosewood	Rosewood (5-8)	410
Spring Creek	Spring Creek	614

**MS to HS Feeder Pattern**

2018-19 MS Zone	2018-19 HS Zone	Total 5-8th Live and Attend-In	MS Attendance
Brogden	Southern Wayne	375	67%
Brogden	Spring Creek	187	33%
Dillard	Goldsboro	501	100%
Eastern Wayne	Eastern Wayne	642	100%
Grantham	Southern Wayne	363	100%
Greenwood	Eastern Wayne	199	74%
Greenwood	Spring Creek	71	26%
Mount Olive	Southern Wayne	358	100%
Norwayne	Aycock	1145	100%
Rosewood	Rosewood	410	100%
Spring Creek	Spring Creek	614	100%

DRAFT Option 1 MS Zone	DRAFT Option 1 HS Zone	Total 5-8th Live and Attend-In	MS Attendance
Brogden	Southern Wayne	375	67%
Brogden	Spring Creek	187	33%
Dillard	Goldsboro	520	100%
Eastern Wayne	Eastern Wayne	642	100%
Grantham	Southern Wayne	361	100%
Greenwood	Eastern Wayne	344	100%
Mount Olive	Southern Wayne	360	100%
Norwayne	Aycock	1126	100%
Rosewood	Rosewood	410	100%
Spring Creek	Spring Creek	540	100%

DRAFT Option 2 MS Zone	DRAFT Option 2 HS Zone	Total 5-8th Live and Attend-In	MS Attendance
Brogden	Southern Wayne	337	64%
Brogden	Spring Creek	187	36%
Dillard (5-8)	Goldsboro	444	100%
Eastern Wayne	Eastern Wayne	642	100%
Grantham	Southern Wayne	343	100%
Greenwood	Eastern Wayne	344	86%
Greenwood	Goldsboro	57	14%
Mount Olive	Southern Wayne	360	100%
Norwayne	Aycock	1145	100%
Rosewood (5-8)	Rosewood	466	100%
Spring Creek	Spring Creek	540	100%

DRAFT Option 3 MS Zone	DRAFT Option 3 HS Zone	Total 5-8th Live and Attend-In	MS Attendance
Brogden	Southern Wayne	375	67%
Brogden	Spring Creek	187	33%
Dillard (5-8)	Goldsboro	513	100%
Eastern Wayne	Eastern Wayne	642	100%
Grantham	Southern Wayne	361	100%
Greenwood	Eastern Wayne	258	78%
Greenwood	Spring Creek	74	22%
Mount Olive	Southern Wayne	360	100%
Norwayne	Aycock	1145	100%
Rosewood (5-8)	Rosewood	410	100%
Spring Creek	Spring Creek	540	100%

DRAFT Option 4 MS Zone	DRAFT Option 4 HS Zone	Total 5-8th Live and Attend-In	MS Attendance
Brogden	Southern Wayne	375	67%
Brogden	Spring Creek	187	33%
Dillard	Eastern Wayne	179	30%
Dillard	Goldsboro	412	70%
Eastern Wayne	Eastern Wayne	442	100%
Grantham	Southern Wayne	361	100%
Greenwood	Eastern Wayne	470	100%
Mount Olive	Southern Wayne	360	100%
Norwayne	Aycock	1055	100%
Rosewood (5-8)	Rosewood	410	100%
Spring Creek	Spring Creek	614	100%

DRAFT Option 5 MS Zone	DRAFT Option 5 HS Zone	Total 5-8th Live and Attend-In	MS Attendance
Brogden	Southern Wayne	375	67%
Brogden	Spring Creek	187	33%
Dillard	Eastern Wayne	179	26%
Dillard	Goldsboro	499	74%
Eastern Wayne	Aycock	127	22%
Eastern Wayne	Eastern Wayne	442	78%
Grantham	Southern Wayne	361	100%
Greenwood	Eastern Wayne	470	100%
Mount Olive	Southern Wayne	360	100%
Norwayne	Aycock	841	100%
Rosewood (5-8)	Rosewood	410	100%
Spring Creek	Spring Creek	614	100%

**High School Options Estimated Enrollment Statistics**

High School	2018-19 Capacity	Total Enrolled	DRAFT Option 1 Estimated Enrollment	DRAFT Option 2 Estimated Enrollment	DRAFT Option 3 Estimated Enrollment	DRAFT Option 4 Estimated Enrollment	DRAFT Option 5 Estimated Enrollment
Charles B. Aycock High School	1296	1164	1139	1164	1164	1087	981
Eastern Wayne High School	1403	965	1089	1088	1031	1243	1243
Goldsboro High School	672	574	599	574	567	432	538
Rosewood High School	556	499	499	549	499	499	499
Southern Wayne High School	1219	1083	1083	1033	1083	1083	1083
Spring Creek High School	773	714	590	591	655	655	655
<b>Total</b>	<b>5919</b>	<b>4999</b>	<b>4999</b>	<b>4999</b>	<b>4999</b>	<b>4999</b>	<b>4999</b>

High School	2018-19 Capacity	Enrolled Utilization	DRAFT Option 1 Utilization	DRAFT Option 2 Utilization	DRAFT Option 3 Utilization	DRAFT Option 4 Utilization	DRAFT Option 5 Utilization
Charles B. Aycock High School	1296	90%	88%	90%	90%	84%	76%
Eastern Wayne High School	1403	69%	78%	78%	73%	89%	89%
Goldsboro High School	672	85%	89%	85%	84%	64%	80%
Rosewood High School	556	90%	90%	99%	90%	90%	90%
Southern Wayne High School	1219	89%	89%	85%	89%	89%	89%
Spring Creek High School	773	92%	76%	76%	85%	85%	85%
<b>Total</b>	<b>5919</b>	<b>84%</b>	<b>84%</b>	<b>84%</b>	<b>84%</b>	<b>84%</b>	<b>84%</b>

Student counts are based on the 10/08/2018 WCPS student database.

The estimated enrollment is calculated by adding the total number students within each new DRAFT option zone that “Live and Attend In” for the grade configuration for that school, plus the students that “Live Out and Attend In” a 2018-19 school, during the 2018-19 school year, plus students attending that school that live outside of the district, plus those students that could not be located in the GIS.



**High School Options Demographics Statistics**

High School	Enrolled				
	Percent Black	Percent White	Percent Other	Percent Non-Hispanic	Percent Hispanic
Charles B. Aycock High School	21.0%	60.6%	18.4%	88.0%	12.0%
Eastern Wayne High School	52.2%	29.5%	18.2%	86.7%	13.3%
Goldsboro High School	90.1%	3.0%	7.0%	95.3%	4.7%
Rosewood High School	15.2%	64.9%	19.8%	88.2%	11.8%
Southern Wayne High School	35.5%	29.2%	35.4%	68.0%	32.0%
Spring Creek High School	16.2%	30.8%	52.9%	51.7%	48.3%
<b>Total</b>	<b>36.8%</b>	<b>37.3%</b>	<b>25.8%</b>	<b>79.1%</b>	<b>20.9%</b>

High School	Option 1				
	Percent Black	Percent White	Percent Other	Percent Non-Hispanic	Percent Hispanic
Charles B. Aycock High School	21.0%	60.5%	18.5%	87.8%	12.2%
Eastern Wayne High School	48.9%	29.6%	21.5%	83.6%	16.4%
Goldsboro High School	87.3%	5.5%	7.2%	95.3%	4.7%
Rosewood High School	15.2%	64.9%	19.8%	88.2%	11.8%
Southern Wayne High School	35.5%	29.2%	35.4%	68.0%	32.0%
Spring Creek High School	14.7%	31.0%	54.2%	50.2%	49.8%
<b>Total</b>	<b>36.8%</b>	<b>37.3%</b>	<b>25.8%</b>	<b>79.1%</b>	<b>20.9%</b>

High School	Option 2				
	Percent Black	Percent White	Percent Other	Percent Non-Hispanic	Percent Hispanic
Charles B. Aycock High School	21.0%	60.6%	18.4%	88.0%	12.0%
Eastern Wayne High School	49.0%	29.5%	21.5%	83.5%	16.5%
Goldsboro High School	90.1%	3.0%	7.0%	95.3%	4.7%
Rosewood High School	16.9%	61.6%	21.5%	86.5%	13.5%
Southern Wayne High School	35.5%	29.2%	35.2%	67.9%	32.1%
Spring Creek High School	14.7%	31.1%	54.1%	50.3%	49.7%
<b>Total</b>	<b>36.8%</b>	<b>37.3%</b>	<b>25.8%</b>	<b>79.1%</b>	<b>20.9%</b>

Student counts are based on the 10/08/2018 WCPS student database.

The estimated enrollment is calculated by adding the total number students within each new DRAFT option zone that “Live and Attend In” for the grade configuration for that school, plus the students that “Live Out and Attend In” a 2018-19 school, during the 2018-19 school year, plus students attending that school that live outside of the district, plus those students that could not be located in the GIS.

**High School Options Demographics Statistics**

High School	Option 3				
	Percent Black	Percent White	Percent Other	Percent Non-Hispanic	Percent Hispanic
Charles B. Aycock High School	21.0%	60.6%	18.4%	88.0%	12.0%
Eastern Wayne High School	53.2%	27.4%	19.4%	85.3%	14.7%
Goldsboro High School	86.1%	5.8%	8.1%	95.1%	4.9%
Rosewood High School	15.2%	64.9%	19.8%	88.2%	11.8%
Southern Wayne High School	35.5%	29.2%	35.4%	68.0%	32.0%
Spring Creek High School	15.4%	31.5%	53.1%	51.1%	48.9%
<b>Total</b>	<b>36.8%</b>	<b>37.3%</b>	<b>25.8%</b>	<b>79.1%</b>	<b>20.9%</b>

High School	Option 4				
	Percent Black	Percent White	Percent Other	Percent Non-Hispanic	Percent Hispanic
Charles B. Aycock High School	20.7%	61.1%	18.2%	87.9%	12.1%
Eastern Wayne High School	58.1%	24.2%	17.7%	87.0%	13.0%
Goldsboro High School	77.3%	13.0%	9.7%	93.8%	6.3%
Rosewood High School	15.2%	64.9%	19.8%	88.2%	11.8%
Southern Wayne High School	35.5%	29.2%	35.4%	68.0%	32.0%
Spring Creek High School	15.4%	31.5%	53.1%	51.1%	48.9%
<b>Total</b>	<b>36.8%</b>	<b>37.3%</b>	<b>25.8%</b>	<b>79.1%</b>	<b>20.9%</b>

High School	Option 5				
	Percent Black	Percent White	Percent Other	Percent Non-Hispanic	Percent Hispanic
Charles B. Aycock High School	21.2%	59.6%	19.2%	87.2%	12.8%
Eastern Wayne High School	58.1%	24.2%	17.7%	87.0%	13.0%
Goldsboro High School	65.2%	25.1%	9.7%	75.3%	5.0%
Rosewood High School	15.2%	64.9%	19.8%	88.2%	11.8%
Southern Wayne High School	35.5%	29.2%	35.4%	68.0%	32.0%
Spring Creek High School	15.4%	31.5%	53.1%	51.1%	48.9%
<b>Total</b>	<b>36.8%</b>	<b>37.3%</b>	<b>25.8%</b>	<b>77.1%</b>	<b>20.8%</b>

Student counts are based on the 10/08/2018 WCPS student database.

The estimated enrollment is calculated by adding the total number students within each new DRAFT option zone that “Live and Attend In” for the grade configuration for that school, plus the students that “Live Out and Attend In” a 2018-19 school, during the 2018-19 school year, plus students attending that school that live outside of the district, plus those students that could not be located in the GIS.

**High School Option Impacts**

Option	Total Grade Config Live and Attend In Students Impacted
Option 1	149
Option 2	173
Option 3	190
Option 4	355
Option 5	461

HS Zone 2019-20	DRAFT Option 1 HS Zone	Total Grade Config Live and Attend In Students
Aycock	Aycock	1103
Aycock	Goldsboro	25
Eastern Wayne	Eastern Wayne	804
Goldsboro	Goldsboro	555
Rosewood	Rosewood	425
Southern Wayne	Southern Wayne	1046
Spring Creek	Eastern Wayne	124
Spring Creek	Spring Creek	561

HS Zone 2019-20	DRAFT Option 2 HS Zone	Total Grade Config Live and Attend In Students
Aycock	Aycock	1128
Eastern Wayne	Eastern Wayne	804
Goldsboro	Goldsboro	555
Rosewood	Rosewood	425
Southern Wayne	Rosewood	50
Southern Wayne	Southern Wayne	996
Spring Creek	Eastern Wayne	123
Spring Creek	Spring Creek	562

HS Zone 2019-20	DRAFT Option 3 HS Zone	Total Grade Config Live and Attend In Students
Aycock	Aycock	1128
Eastern Wayne	Eastern Wayne	742
Eastern Wayne	Goldsboro	62
Goldsboro	Eastern Wayne	69
Goldsboro	Goldsboro	486
Rosewood	Rosewood	425
Southern Wayne	Southern Wayne	1046
Spring Creek	Eastern Wayne	59
Spring Creek	Spring Creek	626

HS Zone 2019-20	DRAFT Option 4 HS Zone	Total Grade Config Live and Attend In Students
Aycock	Aycock	1051
Aycock	Goldsboro	77
Eastern Wayne	Eastern Wayne	804
Goldsboro	Eastern Wayne	219
Goldsboro	Goldsboro	336
Rosewood	Rosewood	425
Southern Wayne	Southern Wayne	1046
Spring Creek	Eastern Wayne	59
Spring Creek	Spring Creek	626

HS Zone 2019-20	DRAFT Option 5 HS Zone	Total Grade Config Live and Attend In Students
Aycock	Aycock	945
Aycock	Goldsboro	183
Eastern Wayne	Eastern Wayne	804
Goldsboro	Eastern Wayne	219
Goldsboro	Goldsboro	336
Rosewood	Rosewood	425
Southern Wayne	Southern Wayne	1046
Spring Creek	Eastern Wayne	59
Spring Creek	Spring Creek	626

---

## Glossary of Terms

2018-19 Capacity – Capacity counts are calculated using 2018-19 capacity. Those capacities reflect the State of North Carolina’s implementation of a reduction of class size.

2018-19 Total Enrollment – The total number of students attending a given school as of the October 8<sup>th</sup>, 2018. Source is a database export from the Wayne County Public Schools’ student information system.

Utilization - Utilization is the enrollment divided by the 2018-19 Capacity, described as a percentage.

Live and Attend-in students – Students that live inside a school attendance boundary, and attends that school.

Live-out Attend-in students – Students that live outside of the 2018-19 attendance boundaries for the school that they attend, but attend that school.

Estimated Enrollment – The estimated enrollment is calculated by adding the total number students within each new DRAFT option zone that “Live and Attend In” for the grade configuration for that school, plus the students that “Live Out and Attend In” a 2018-19 school, during the 2018-19 school year, plus students attending that school that live outside of the district, plus those students that could not be located in the GIS.

Option Impact – The number of live-in students that change attendance boundaries from the 2018-19 attendance boundaries given each option and Grade Configuration. In other words, an estimate of the total number of students that could be impacted per any of the Options.

Feeder Pattern – The number of students living within the attendance boundary of both a lower grade cohort (ex. Elementary schools) and a higher grade cohort (i.e. Middle School). This is given as both the number of live and attend-in students, and described as a percentage.

# Wayne County Public Schools, NC 2018-19 Elementary School Zones



## Legend

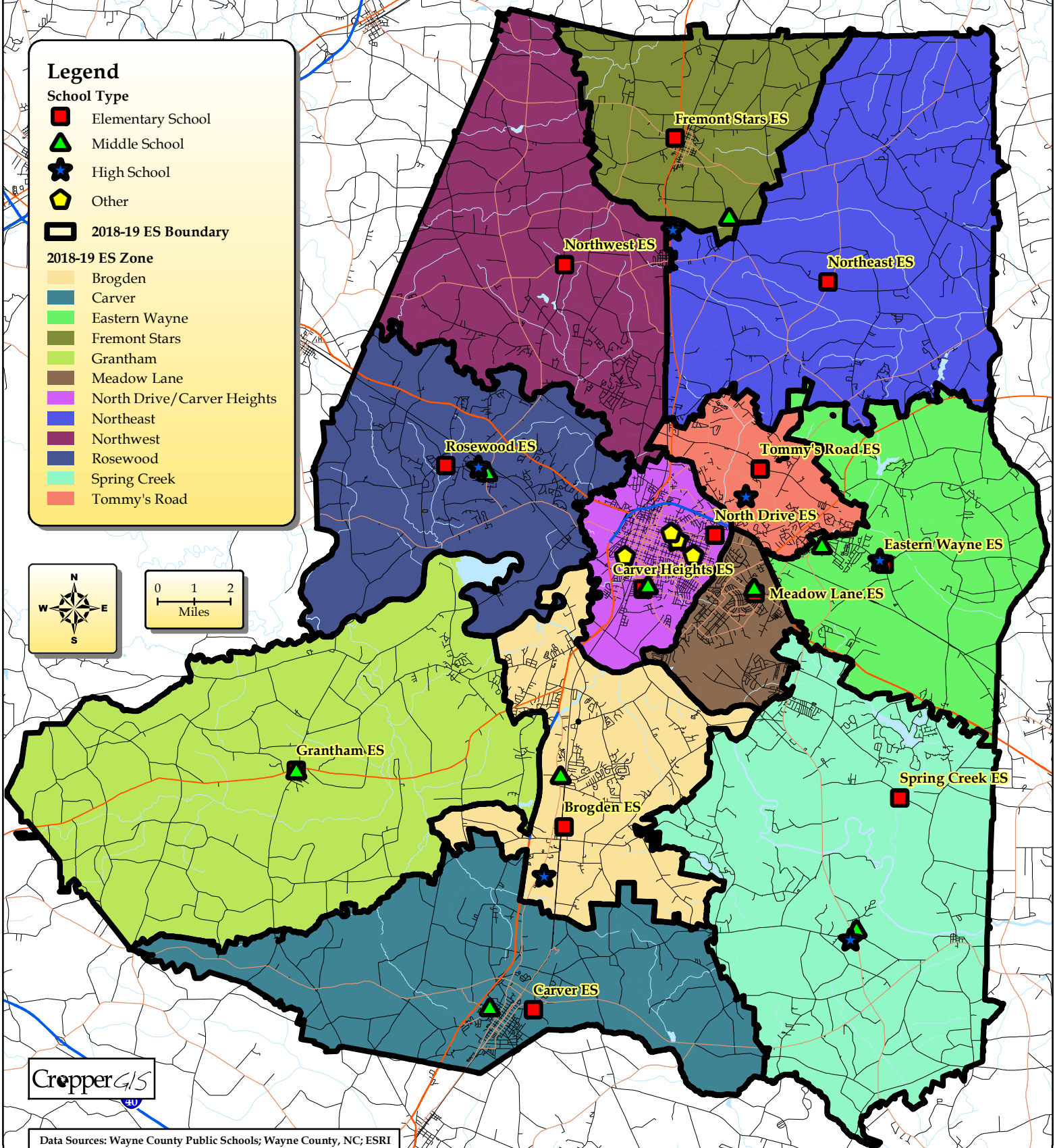
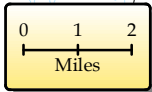
### School Type

- Elementary School
- ▲ Middle School
- ★ High School
- ⬠ Other

### 2018-19 ES Boundary

### 2018-19 ES Zone

- Brogden
- Carver
- Eastern Wayne
- Fremont Stars
- Grantham
- Meadow Lane
- North Drive/Carver Heights
- Northeast
- Northwest
- Rosewood
- Spring Creek
- Tommy's Road



Data Sources: Wayne County Public Schools; Wayne County, NC; ESRI  
Map Created: June 2019, SD.

# Wayne County Public Schools, NC Elementary School Zones DRAFT Option 1



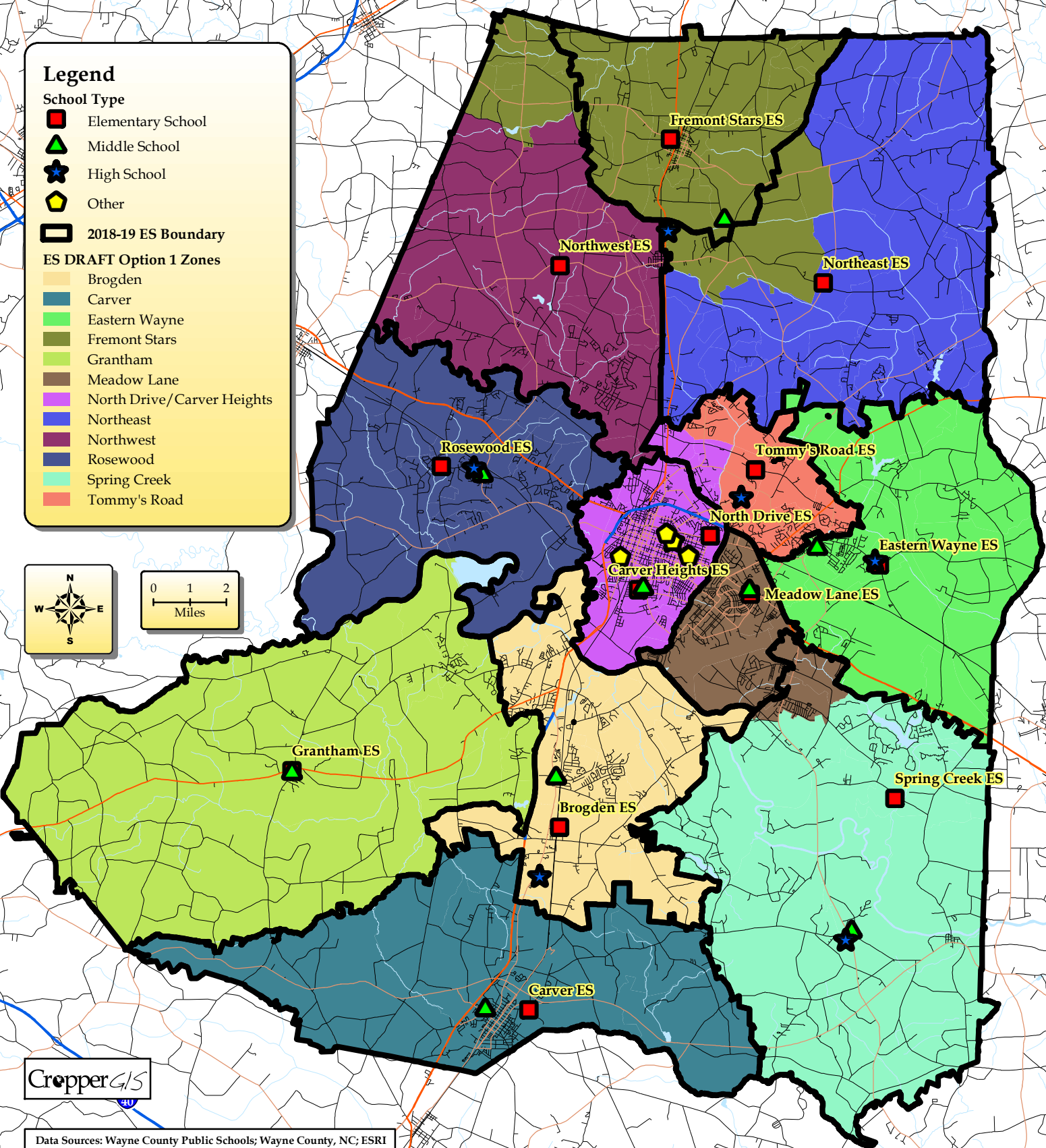
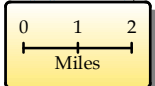
**Legend**

**School Type**

- Elementary School
- ▲ Middle School
- ★ High School
- ◆ Other
- 2018-19 ES Boundary

**ES DRAFT Option 1 Zones**

- Brogden
- Carver
- Eastern Wayne
- Fremont Stars
- Grantham
- Meadow Lane
- North Drive/Carver Heights
- Northeast
- Northwest
- Rosewood
- Spring Creek
- Tommy's Road



Data Sources: Wayne County Public Schools; Wayne County, NC; ESRI  
Map Created: June 2019, SD.

# Wayne County Public Schools, NC Elementary School Zones DRAFT Option 2



**Legend**

**School Type**

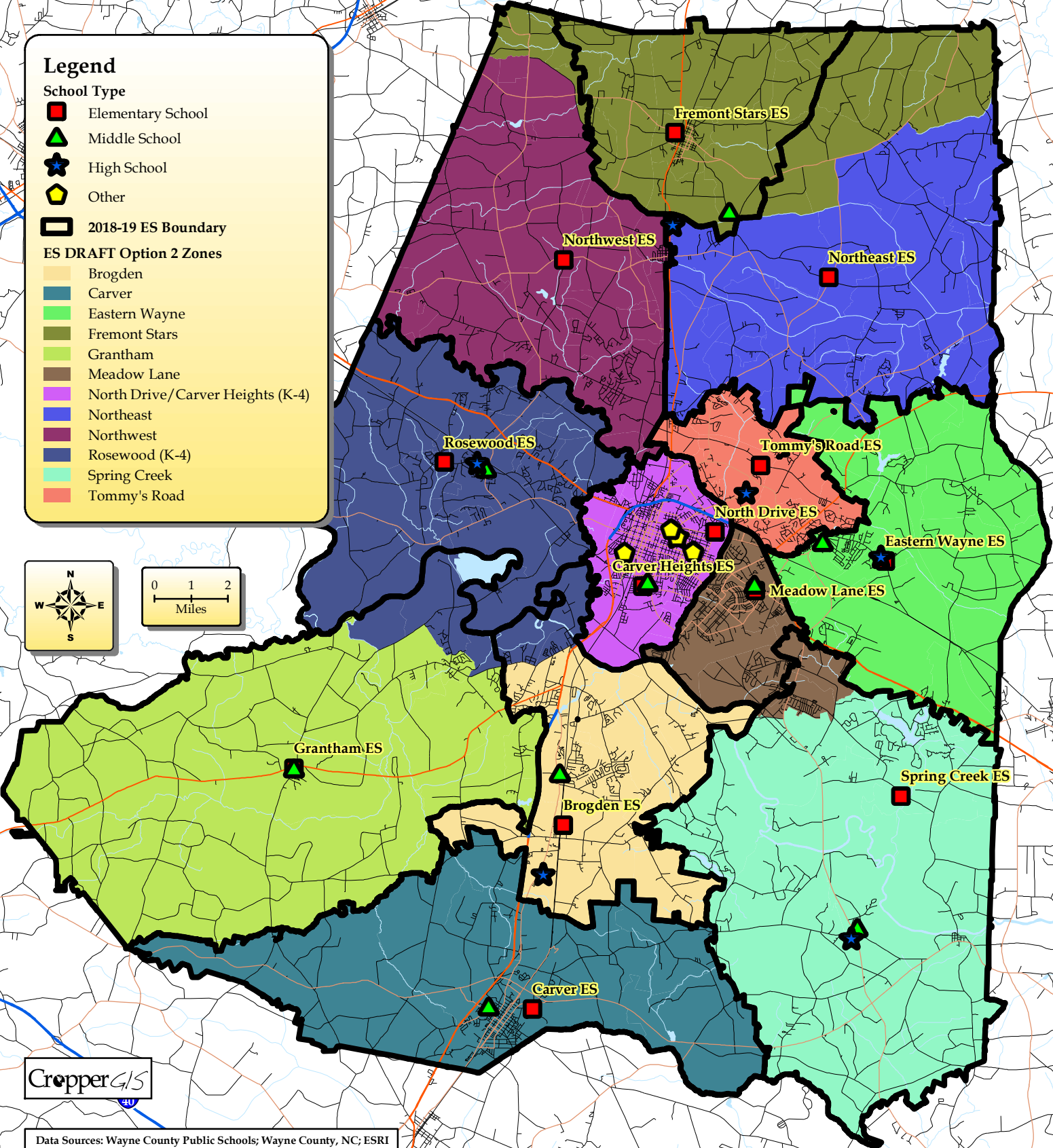
- Elementary School
- ▲ Middle School
- ★ High School
- ◆ Other

**2018-19 ES Boundary**

**ES DRAFT Option 2 Zones**

- Brogden
- Carver
- Eastern Wayne
- Fremont Stars
- Grantham
- Meadow Lane
- North Drive/Carver Heights (K-4)
- Northeast
- Northwest
- Rosewood (K-4)
- Spring Creek
- Tommy's Road

0 1 2 Miles



Data Sources: Wayne County Public Schools; Wayne County, NC; ESRI  
Map Created: June 2019, SD.

# Wayne County Public Schools, NC Elementary School Zones DRAFT Option 3



**Legend**

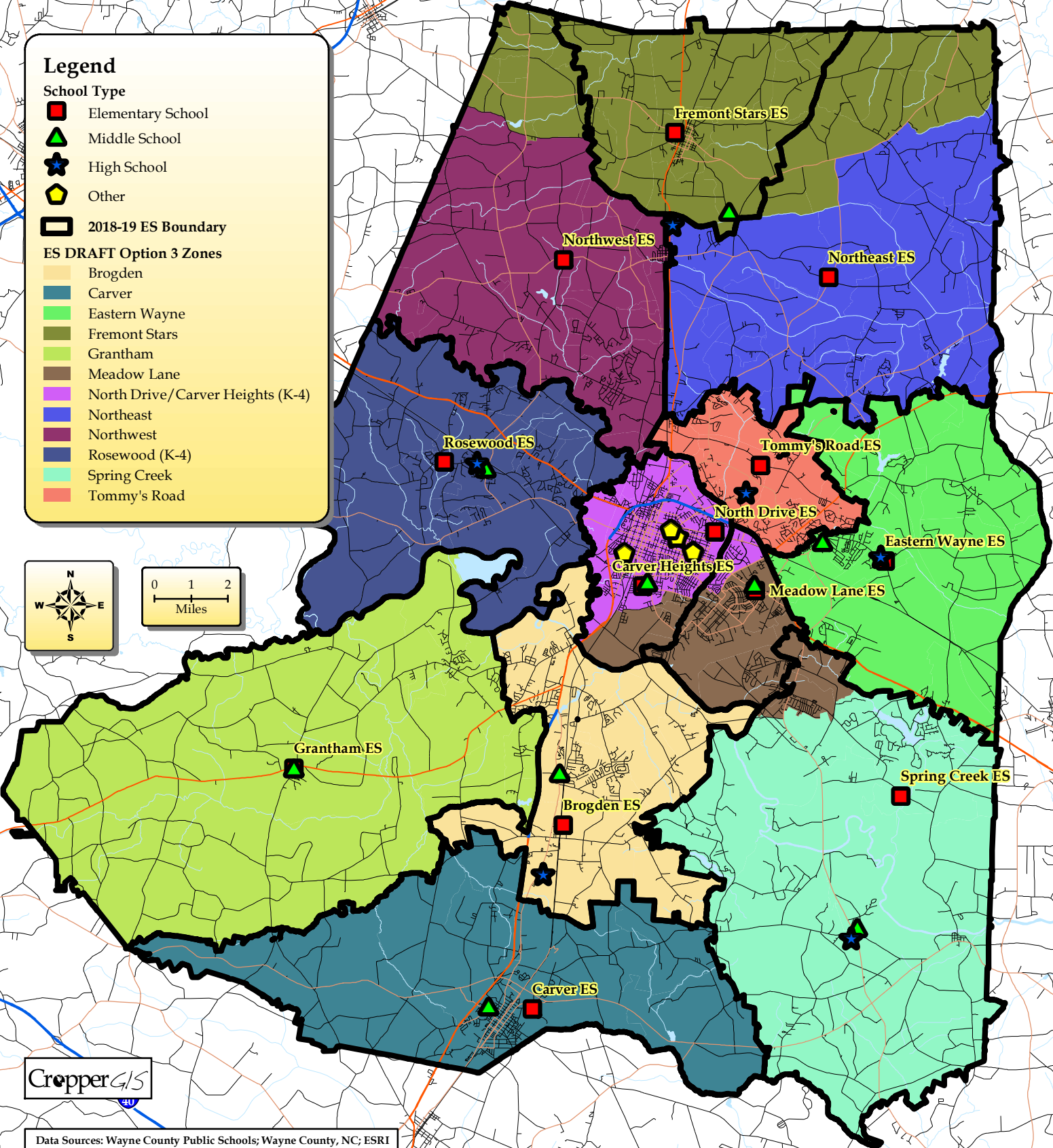
**School Type**

- Elementary School
- ▲ Middle School
- ★ High School
- ⬠ Other

**2018-19 ES Boundary**

**ES DRAFT Option 3 Zones**

- Brogden
- Carver
- Eastern Wayne
- Fremont Stars
- Grantham
- Meadow Lane
- North Drive/Carver Heights (K-4)
- Northeast
- Northwest
- Rosewood (K-4)
- Spring Creek
- Tommy's Road



Data Sources: Wayne County Public Schools; Wayne County, NC; ESRI  
Map Created: July 2019, ADM.



# Wayne County Public Schools, NC

## Elementary School Zones

### DRAFT Option 4



**Legend**

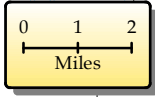
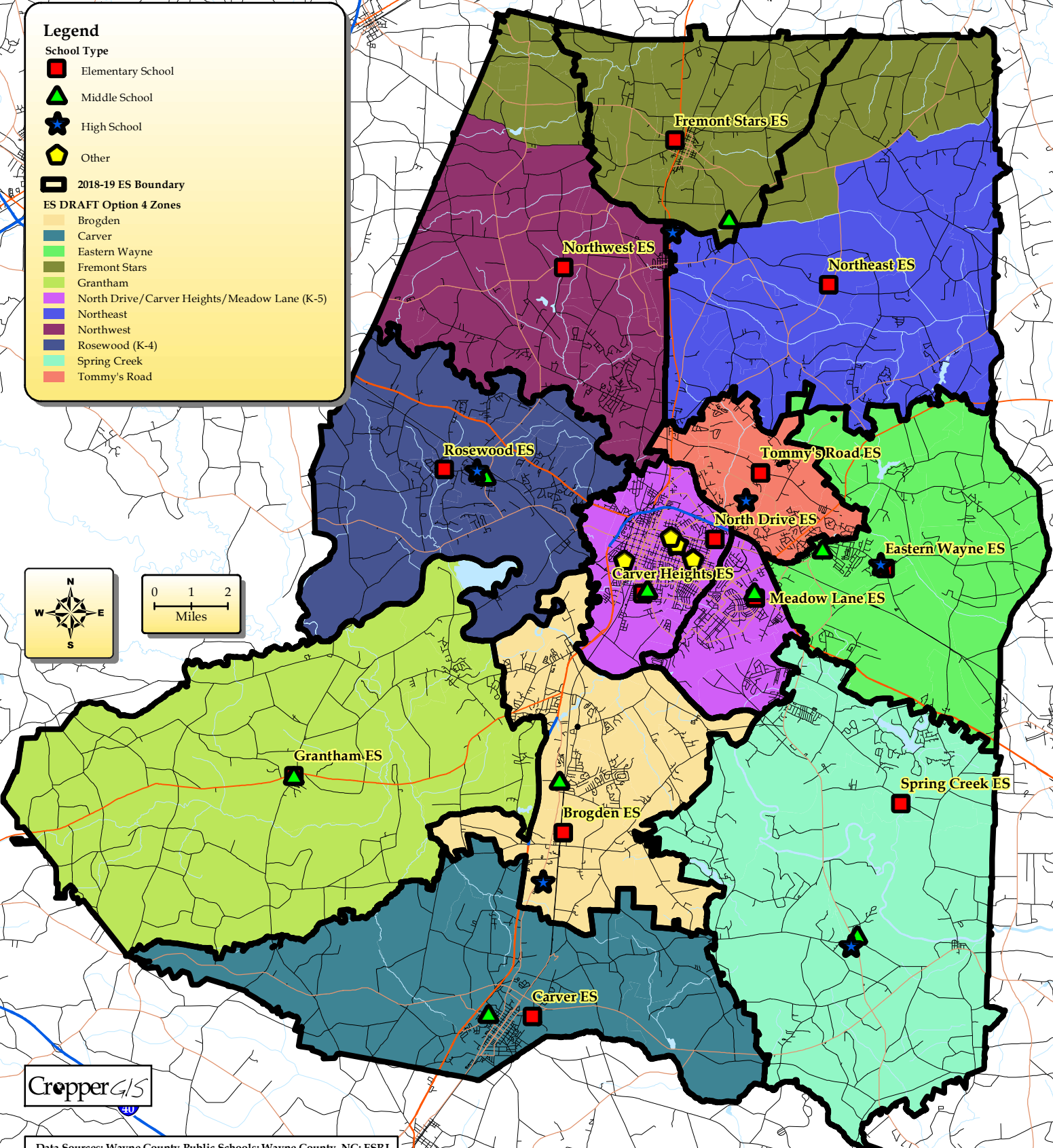
**School Type**

- Elementary School
- ▲ Middle School
- ★ High School
- ◊ Other

**2018-19 ES Boundary**

**ES DRAFT Option 4 Zones**

- Brogden
- Carver
- Eastern Wayne
- Fremont Stars
- Grantham
- North Drive/Carver Heights/Meadow Lane (K-5)
- Northeast
- Northwest
- Rosewood (K-4)
- Spring Creek
- Tommy's Road



Data Sources: Wayne County Public Schools; Wayne County, NC; ESRI  
 Map Created: July 2019, ADM.

# Wayne County Public Schools, NC Elementary School Zones DRAFT Option 5



**Legend**

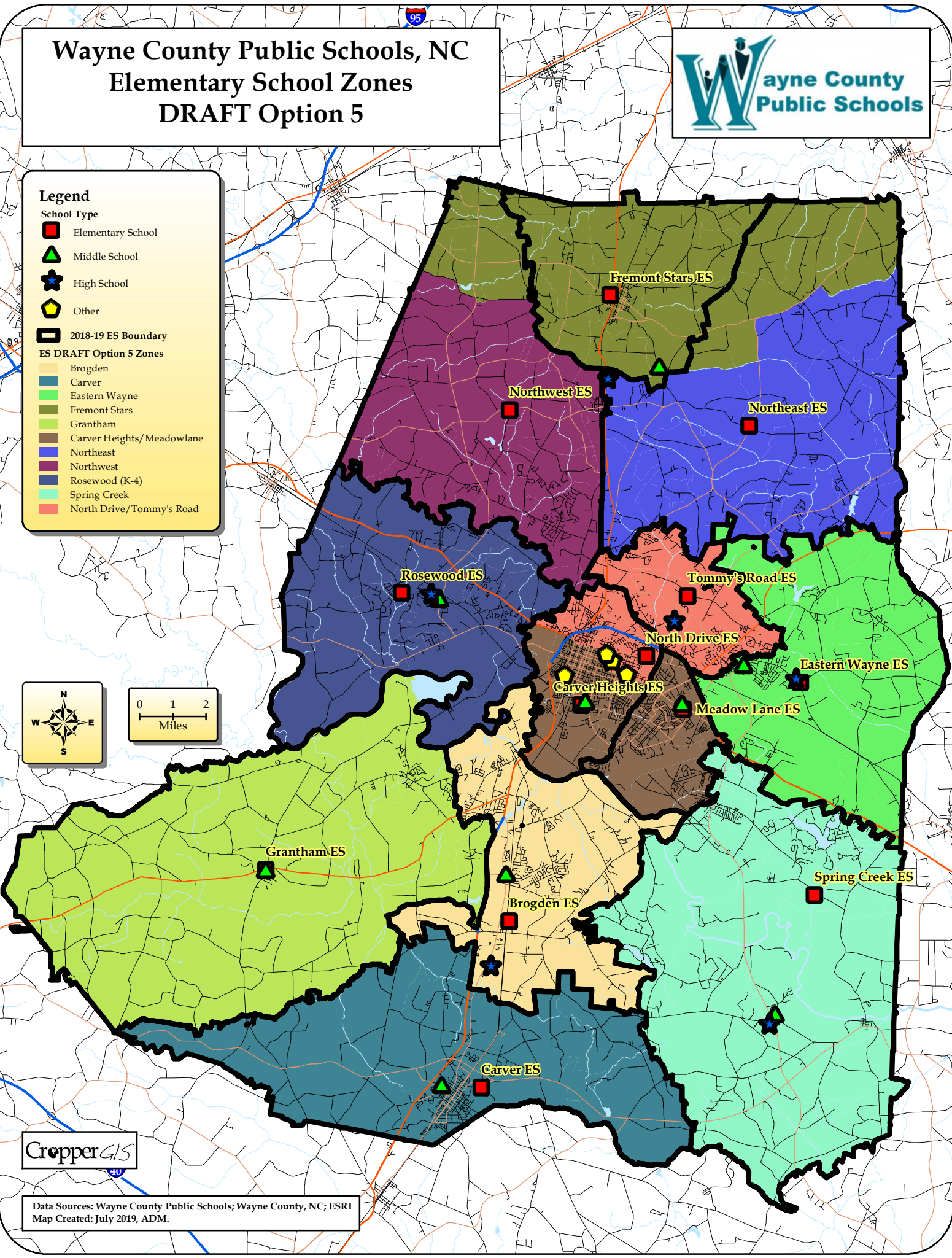
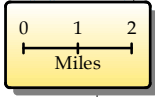
**School Type**

- Elementary School
- ▲ Middle School
- ★ High School
- ◊ Other

**2018-19 ES Boundary**

**ES DRAFT Option 5 Zones**

- Brogden
- Carver
- Eastern Wayne
- Fremont Stars
- Grantham
- Carver Heights/ Meadowlane
- Northeast
- Northwest
- Rosewood (K-4)
- Spring Creek
- North Drive/Tommy's Road



Data Sources: Wayne County Public Schools; Wayne County, NC; ESRI  
Map Created: July 2019, ADM.

# Wayne County Public Schools, NC 2018-19 Middle School Zones



**Legend**

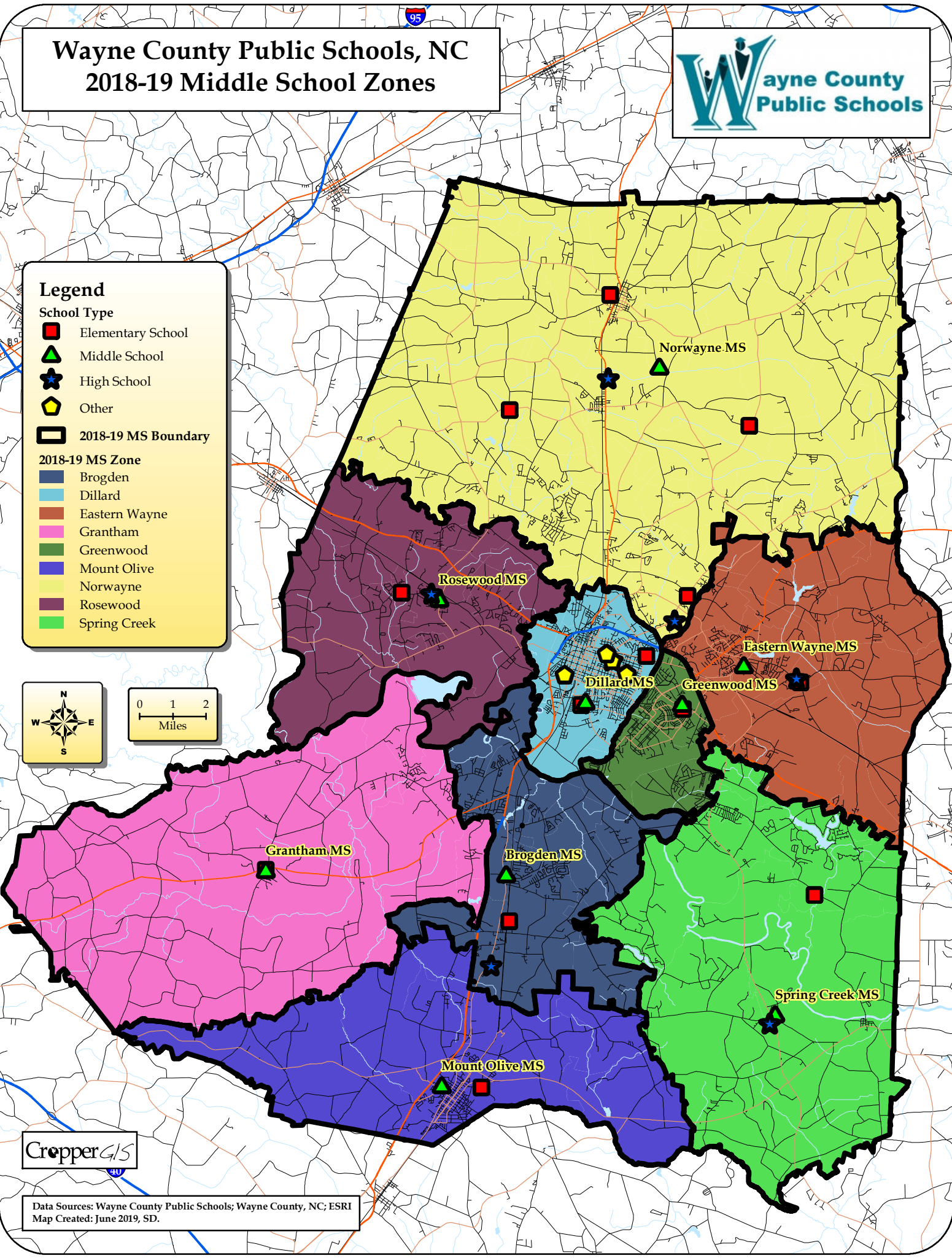
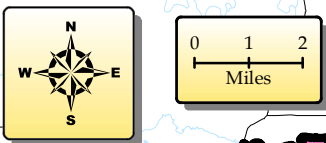
**School Type**

- Elementary School
- ▲ Middle School
- ★ High School
- ◡ Other

**2018-19 MS Zone**

- Brogden
- Dillard
- Eastern Wayne
- Grantham
- Greenwood
- Mount Olive
- Norwayne
- Rosewood
- Spring Creek

**2018-19 MS Boundary**



Cropper GIS

Data Sources: Wayne County Public Schools; Wayne County, NC; ESRI  
Map Created: June 2019, SD.

# Wayne County Public Schools, NC

## Middle School Zones

### DRAFT Option 1



**Legend**

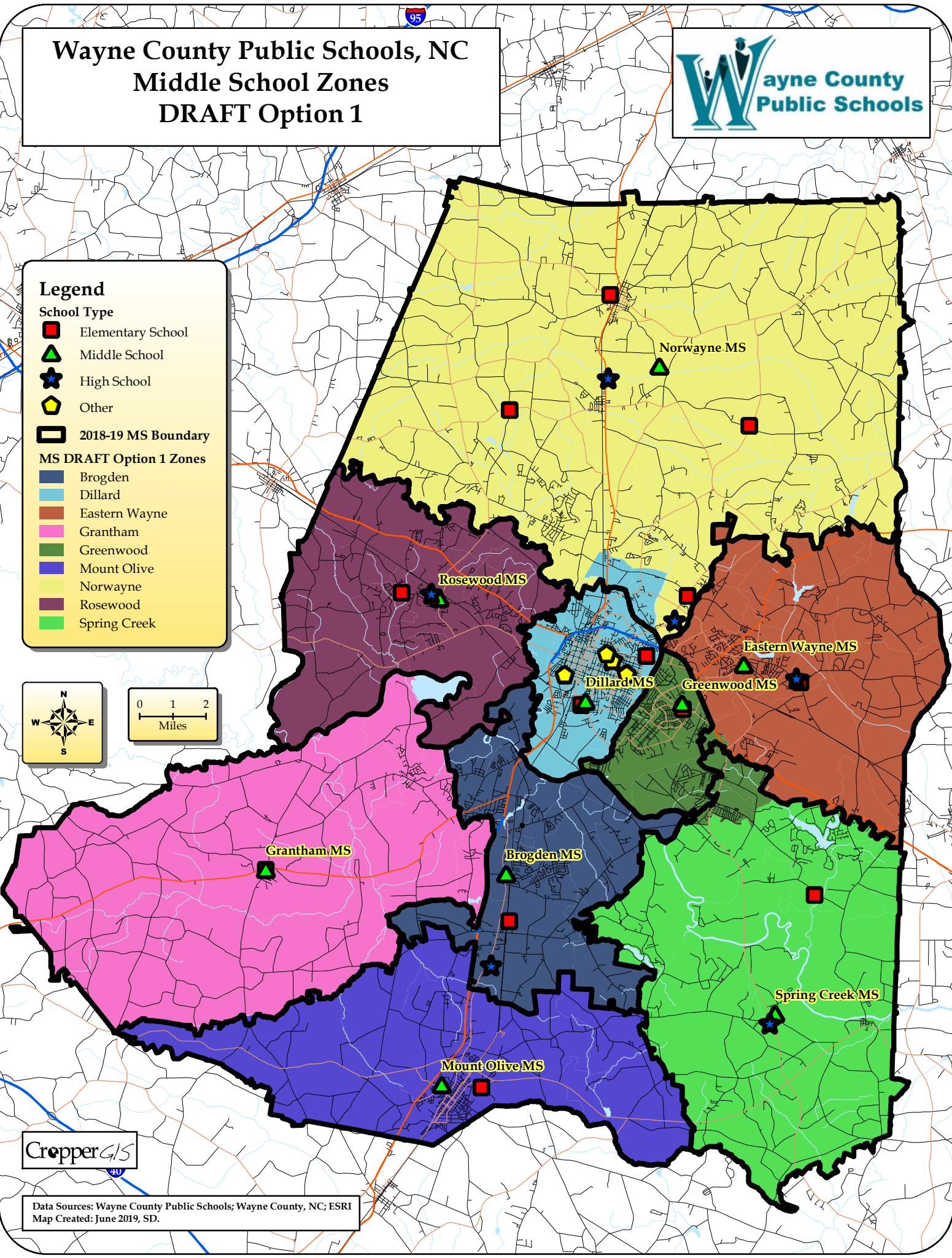
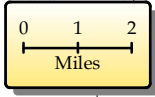
**School Type**

- Elementary School
- ▲ Middle School
- ★ High School
- ◆ Other

**2018-19 MS Boundary**

**MS DRAFT Option 1 Zones**

- Brogden
- Dillard
- Eastern Wayne
- Grantham
- Greenwood
- Mount Olive
- Norwayne
- Rosewood
- Spring Creek



Cropper GIS

Data Sources: Wayne County Public Schools; Wayne County, NC; ESRI  
 Map Created: June 2019, SD.

# Wayne County Public Schools, NC

## Middle School Zones

### DRAFT Option 2



**Legend**

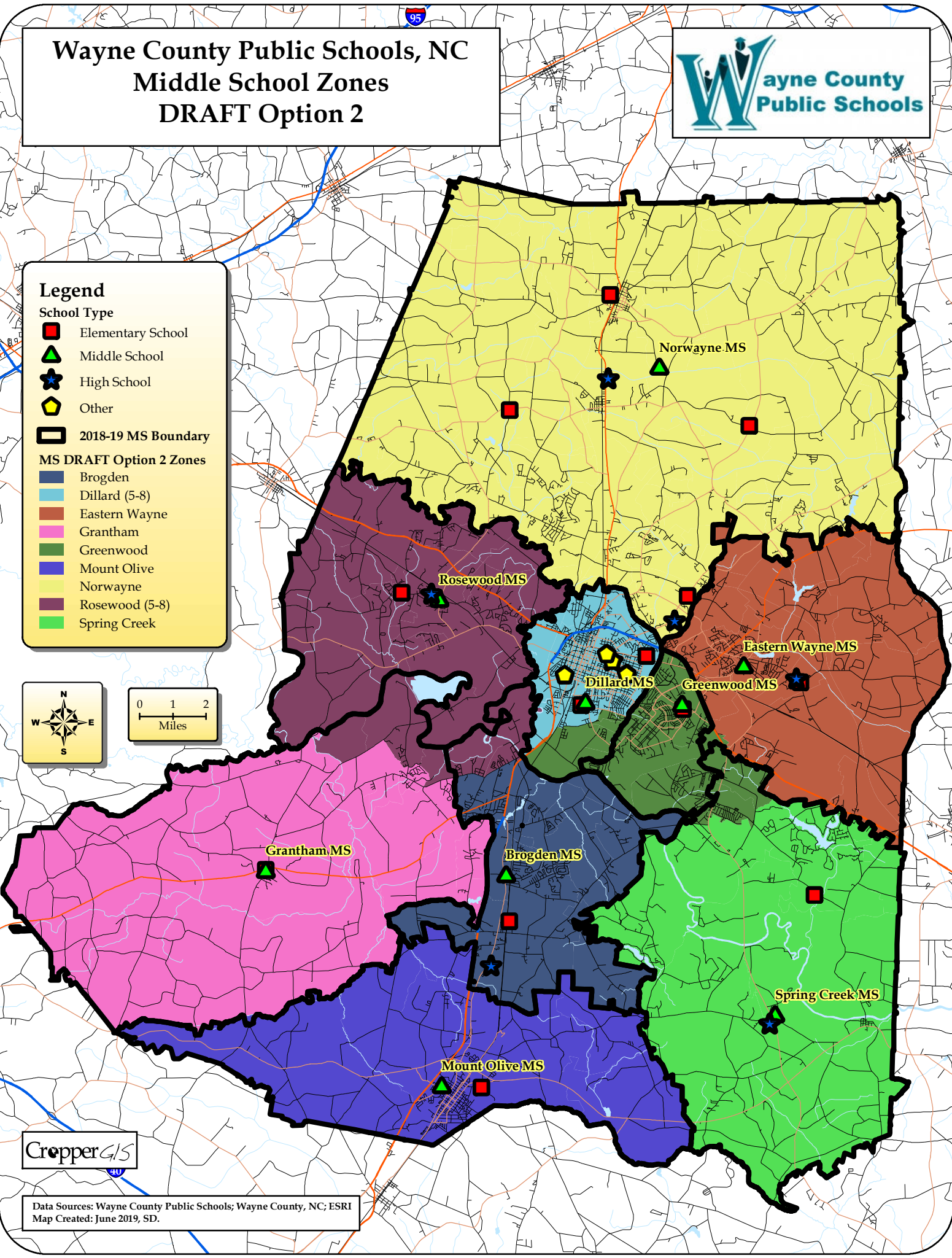
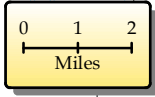
**School Type**

- Elementary School
- ▲ Middle School
- ★ High School
- ◆ Other

**2018-19 MS Boundary**

**MS DRAFT Option 2 Zones**

- Brogden
- Dillard (5-8)
- Eastern Wayne
- Grantham
- Greenwood
- Mount Olive
- Norwayne
- Rosewood (5-8)
- Spring Creek



Data Sources: Wayne County Public Schools; Wayne County, NC; ESRI  
 Map Created: June 2019, SD.

# Wayne County Public Schools, NC

## Middle School Zones

### DRAFT Option 3



**Legend**

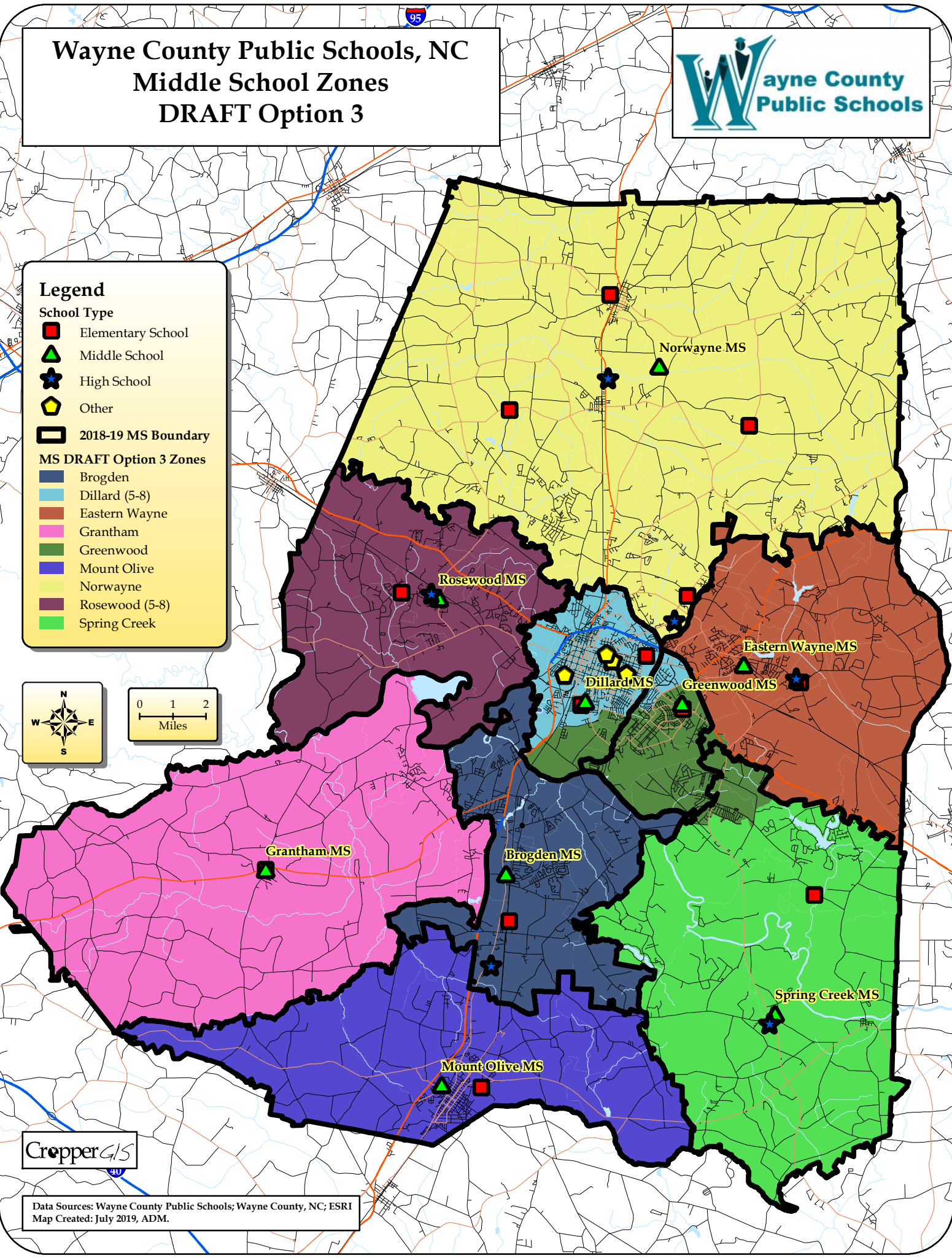
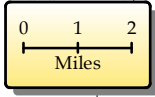
**School Type**

- Elementary School
- ▲ Middle School
- ★ High School
- ◆ Other

**2018-19 MS Boundary**

**MS DRAFT Option 3 Zones**

- Brogden
- Dillard (5-8)
- Eastern Wayne
- Grantham
- Greenwood
- Mount Olive
- Norwayne
- Rosewood (5-8)
- Spring Creek



Data Sources: Wayne County Public Schools; Wayne County, NC; ESRI  
 Map Created: July 2019, ADM.

# Wayne County Public Schools, NC

## Middle School Zones

### DRAFT Option 4



**Legend**

**School Type**

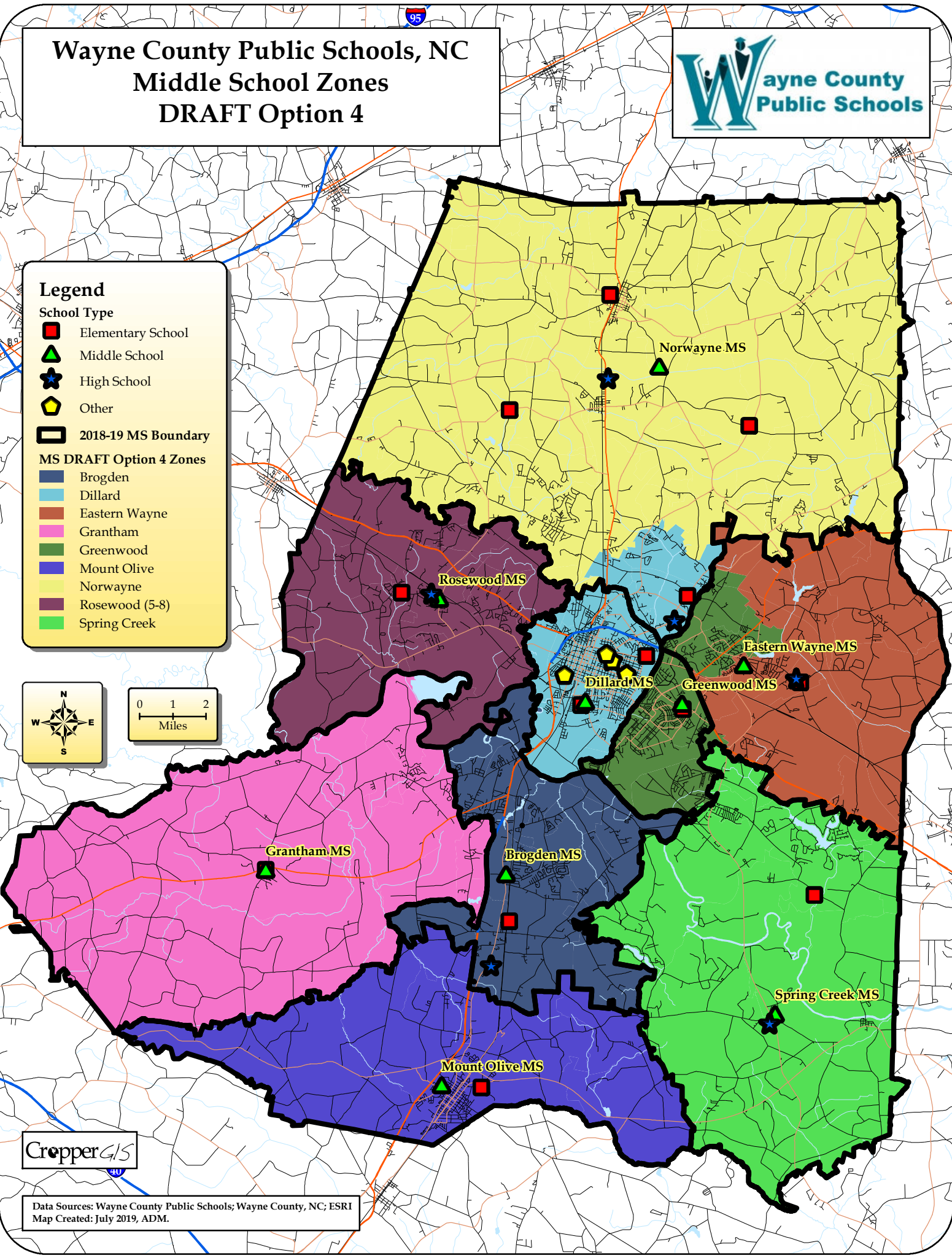
- Elementary School
- ▲ Middle School
- ★ High School
- ◆ Other

**2018-19 MS Boundary**

**MS DRAFT Option 4 Zones**

- Brogden
- Dillard
- Eastern Wayne
- Grantham
- Greenwood
- Mount Olive
- Norwayne
- Rosewood (5-8)
- Spring Creek

0 1 2 Miles



Cropper GIS

Data Sources: Wayne County Public Schools; Wayne County, NC; ESRI  
 Map Created: July 2019, ADM.

# Wayne County Public Schools, NC

## Middle School Zones

### DRAFT Option 5



**Legend**

**School Type**

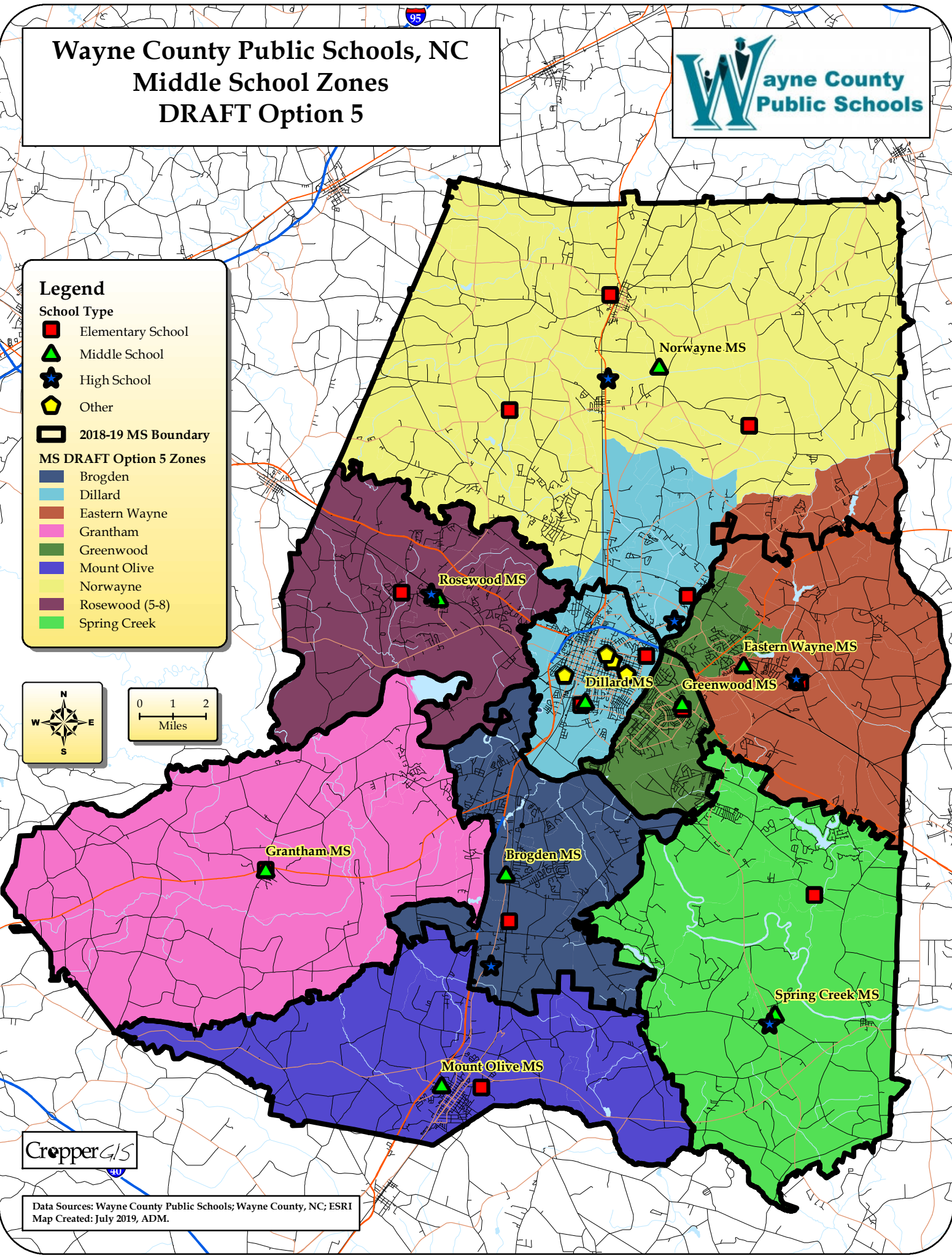
- Elementary School
- ▲ Middle School
- ★ High School
- ◊ Other

**2018-19 MS Boundary**

**MS DRAFT Option 5 Zones**

- Brogden
- Dillard
- Eastern Wayne
- Grantham
- Greenwood
- Mount Olive
- Norwayne
- Rosewood (5-8)
- Spring Creek

0 1 2 Miles



Cropper GIS

Data Sources: Wayne County Public Schools; Wayne County, NC; ESRI  
 Map Created: July 2019, ADM.



# Wayne County Public Schools, NC 2018-19 High School Zones



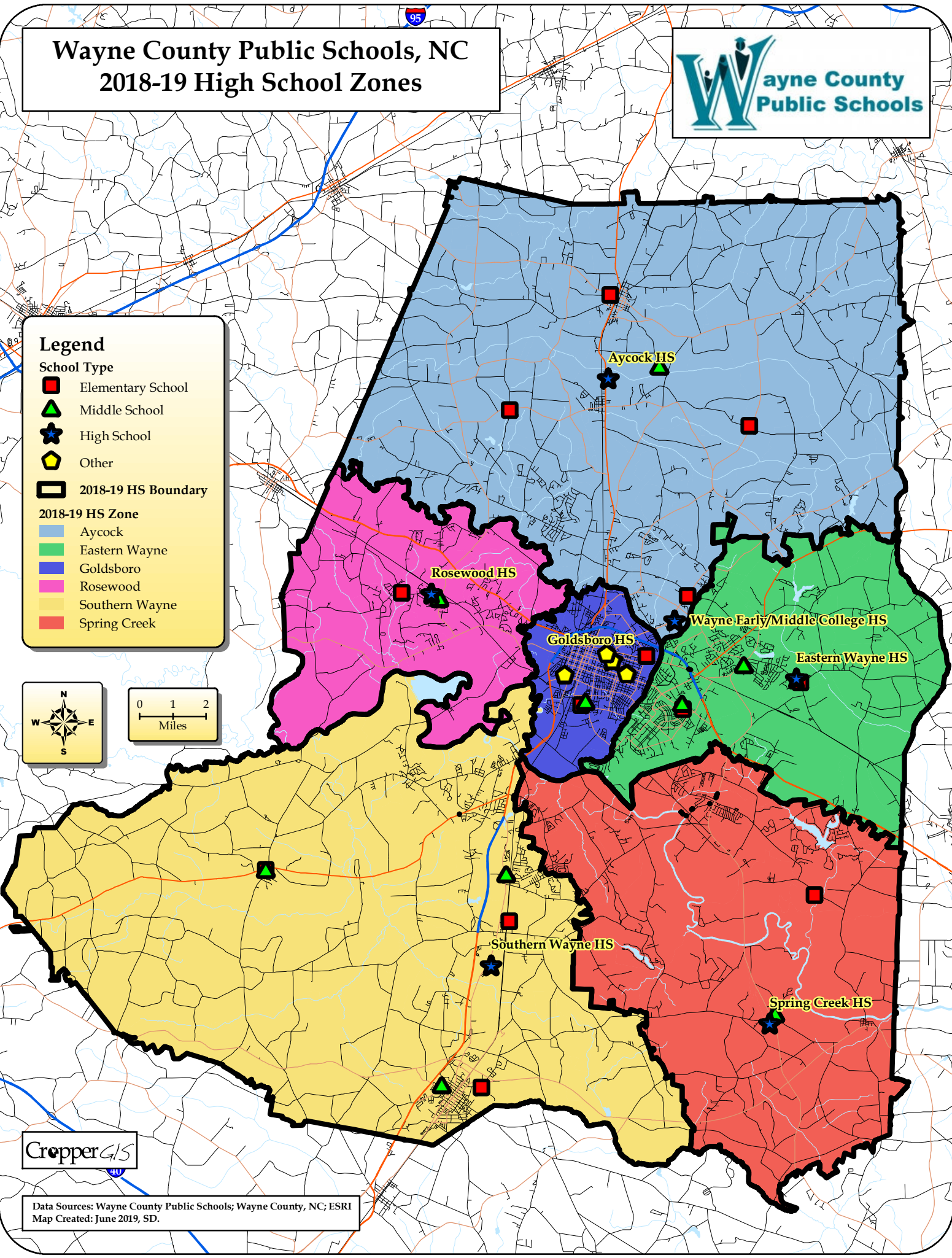
**Legend**

**School Type**

- Elementary School (Red square)
- Middle School (Green triangle)
- High School (Blue star)
- Other (Yellow pentagon)

**2018-19 HS Zone**

- Aycock (Light blue)
- Eastern Wayne (Light green)
- Goldsboro (Blue)
- Rosewood (Pink)
- Southern Wayne (Yellow)
- Spring Creek (Red)



Cropper GIS

Data Sources: Wayne County Public Schools; Wayne County, NC; ESRI  
Map Created: June 2019, SD.

# Wayne County Public Schools, NC High School Zones DRAFT Option 1



**Legend**

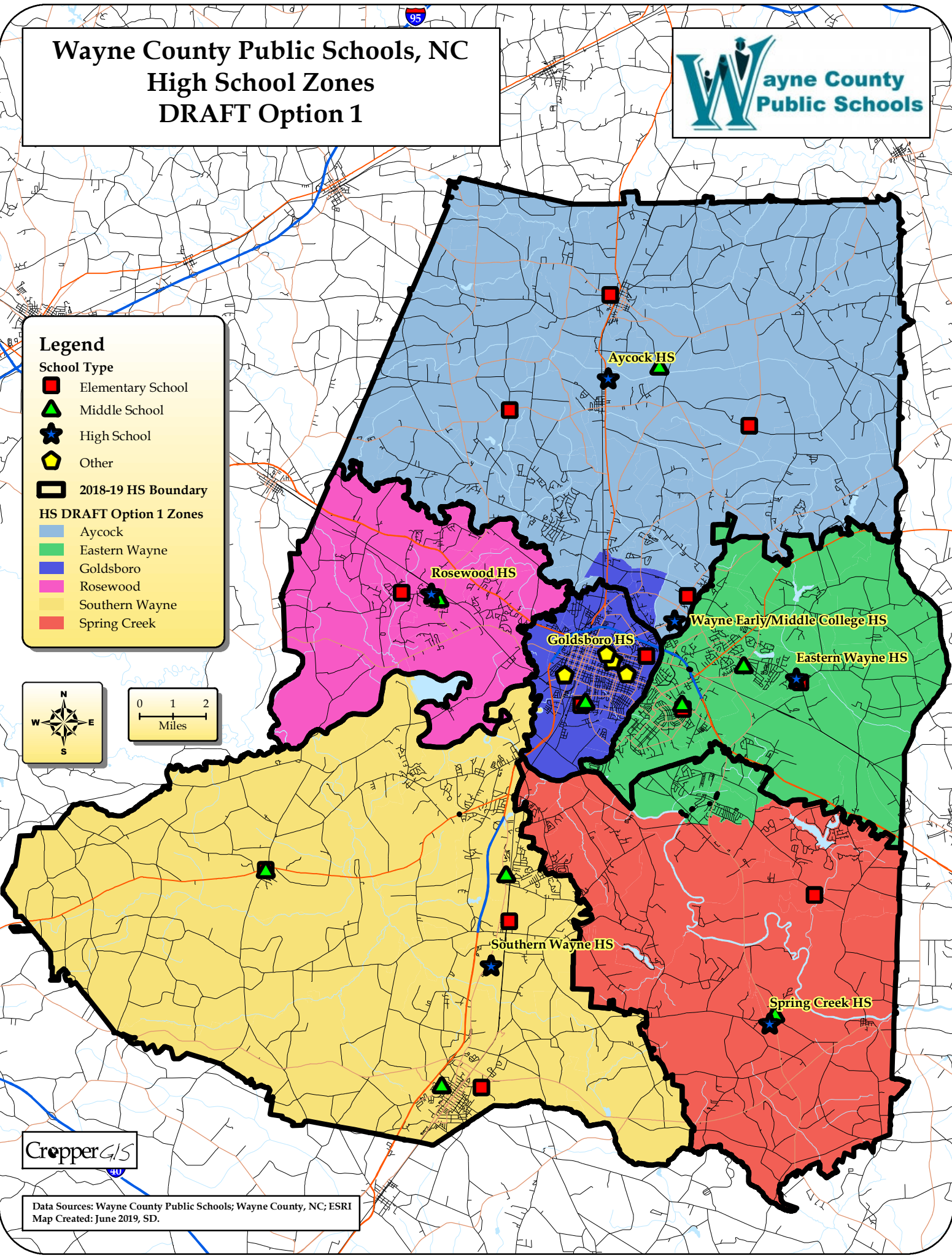
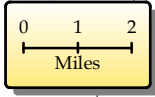
**School Type**

- Elementary School (Red square)
- Middle School (Green triangle)
- High School (Blue star)
- Other (Yellow pentagon)

**2018-19 HS Boundary**

**HS DRAFT Option 1 Zones**

- Aycock (Light blue)
- Eastern Wayne (Light green)
- Goldsboro (Blue)
- Rosewood (Pink)
- Southern Wayne (Yellow)
- Spring Creek (Red)



Cropper GIS

Data Sources: Wayne County Public Schools; Wayne County, NC; ESRI  
Map Created: June 2019, SD.

# Wayne County Public Schools, NC High School Zones DRAFT Option 2



**Legend**

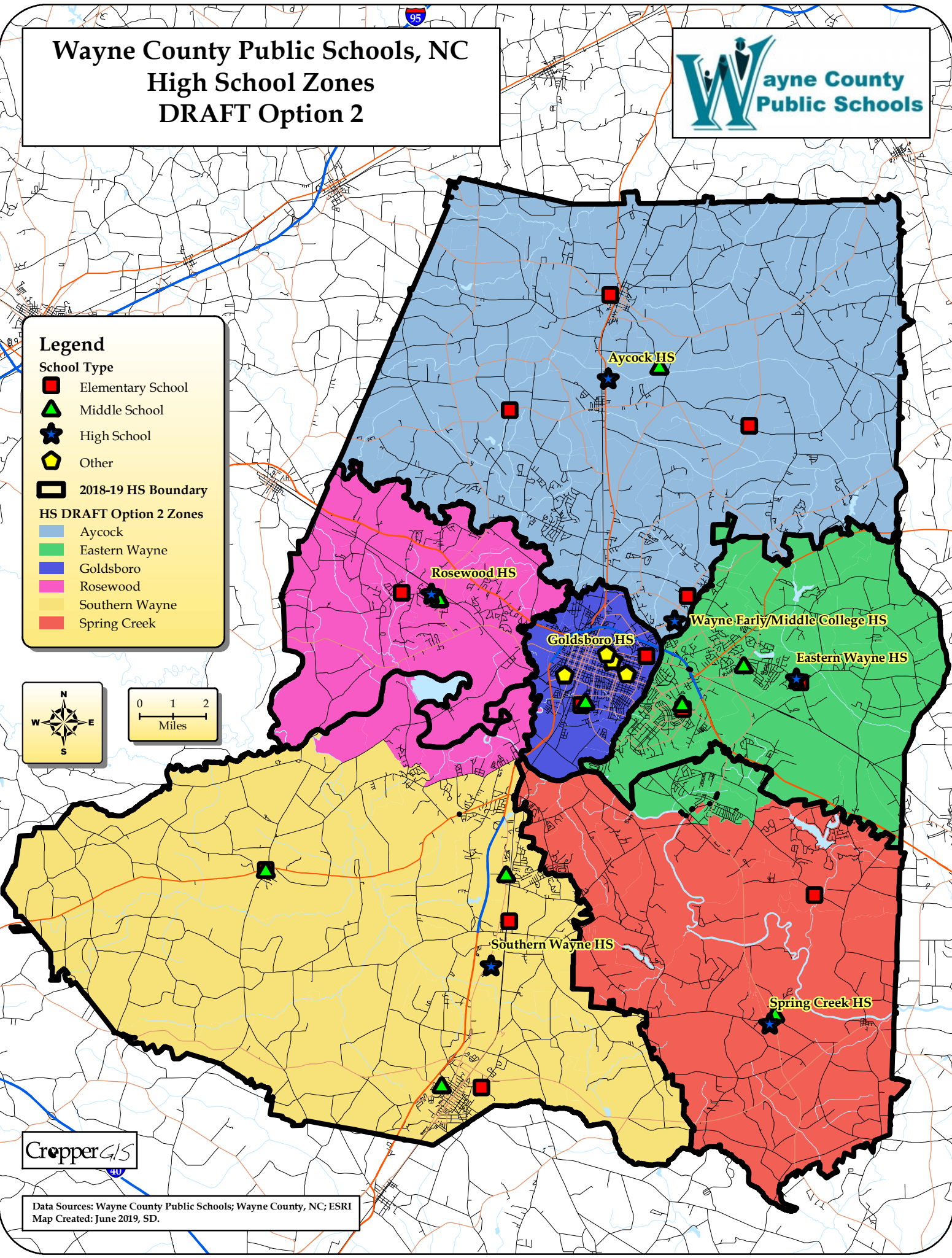
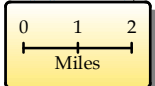
**School Type**

- Elementary School
- Middle School
- High School
- Other

**2018-19 HS Boundary**

**HS DRAFT Option 2 Zones**

- Aycock
- Eastern Wayne
- Goldsboro
- Rosewood
- Southern Wayne
- Spring Creek



Cropper GIS

Data Sources: Wayne County Public Schools; Wayne County, NC; ESRI  
Map Created: June 2019, SD.

# Wayne County Public Schools, NC High School Zones DRAFT Option 3



**Legend**

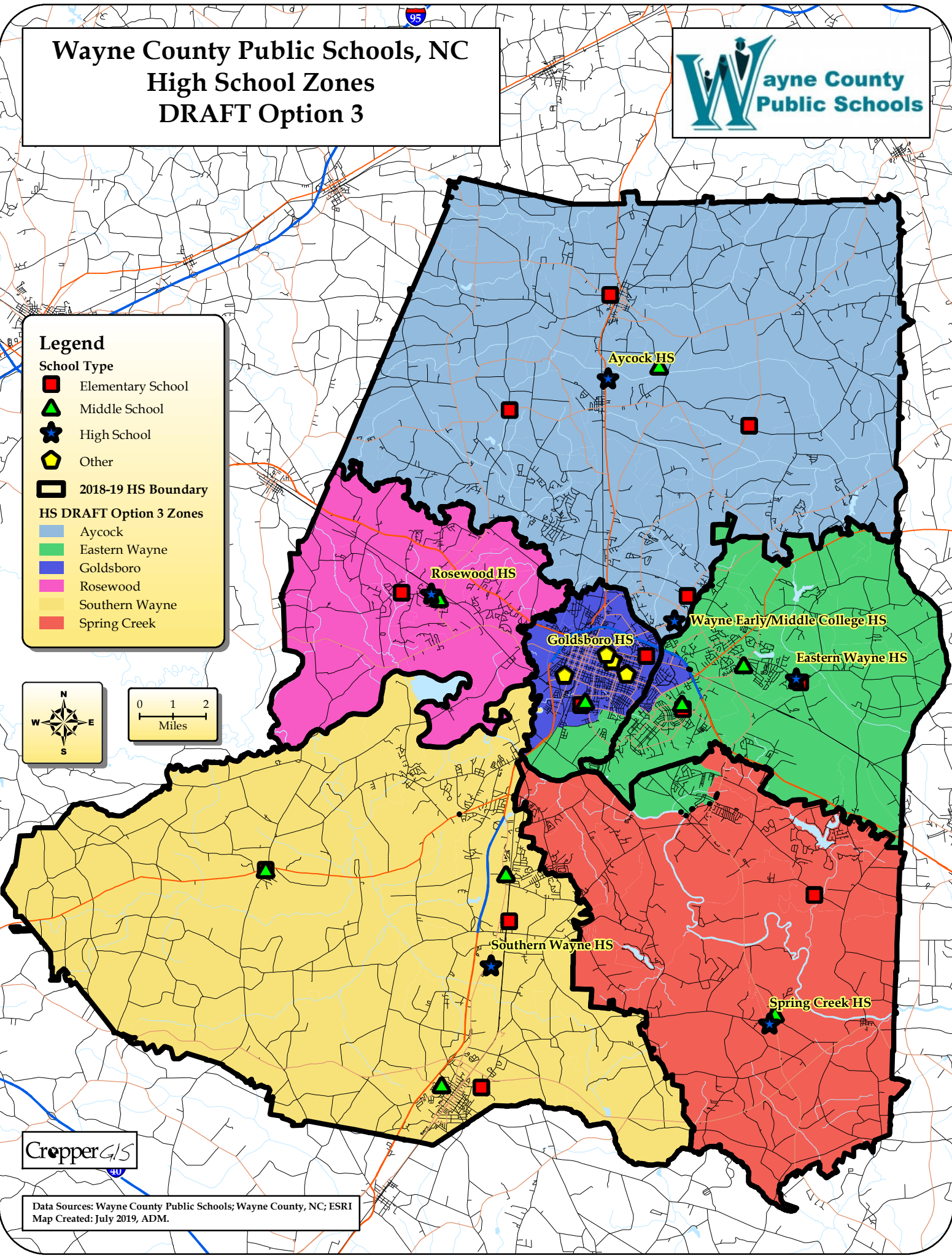
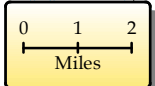
**School Type**

- Elementary School (Red square)
- Middle School (Green triangle)
- High School (Blue star)
- Other (Yellow pentagon)

**2018-19 HS Boundary**

**HS DRAFT Option 3 Zones**

- Aycock (Light blue)
- Eastern Wayne (Light green)
- Goldsboro (Blue)
- Rosewood (Pink)
- Southern Wayne (Yellow)
- Spring Creek (Red)



Data Sources: Wayne County Public Schools; Wayne County, NC; ESRI  
Map Created: July 2019, ADM.

# Wayne County Public Schools, NC High School Zones DRAFT Option 4



**Legend**

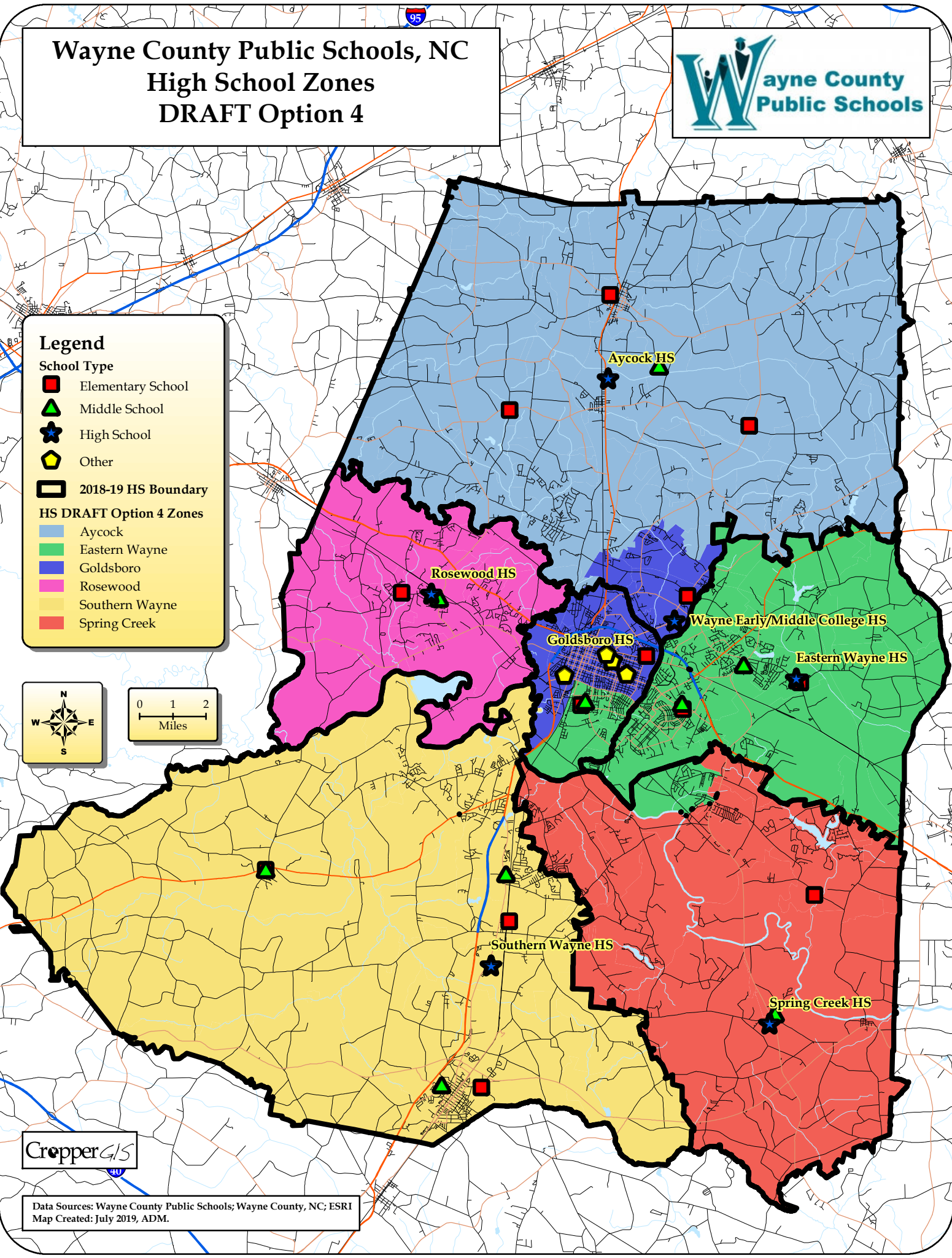
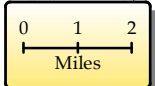
**School Type**

- Elementary School (Red square)
- Middle School (Green triangle)
- High School (Blue star)
- Other (Yellow pentagon)

**2018-19 HS Boundary**

**HS DRAFT Option 4 Zones**

- Aycock (Light blue)
- Eastern Wayne (Light green)
- Goldsboro (Blue)
- Rosewood (Pink)
- Southern Wayne (Yellow)
- Spring Creek (Red)



Cropper GIS

Data Sources: Wayne County Public Schools; Wayne County, NC; ESRI  
Map Created: July 2019, ADM.

# Wayne County Public Schools, NC High School Zones DRAFT Option 5



**Legend**

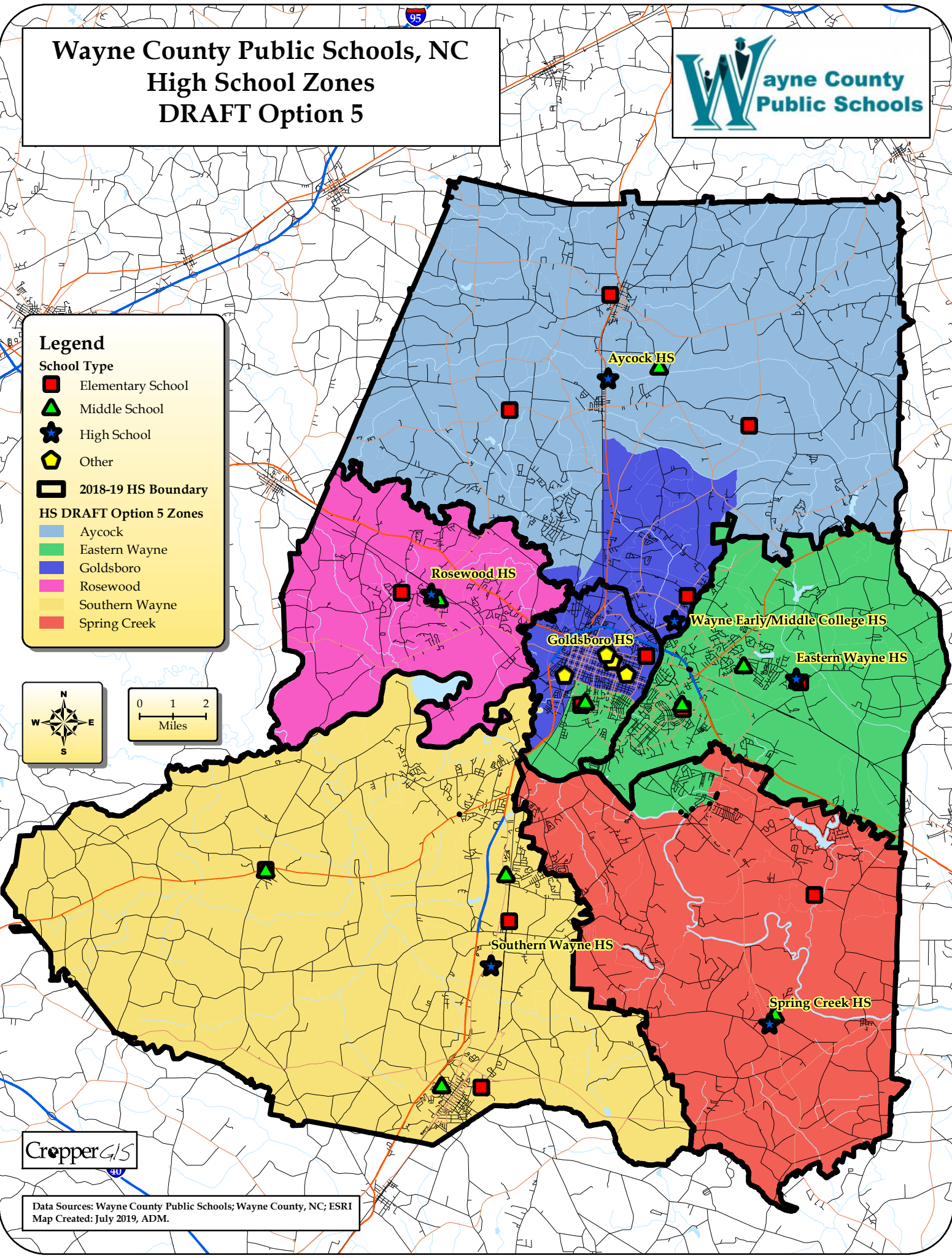
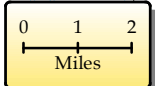
**School Type**

- Elementary School (Red square)
- Middle School (Green triangle)
- High School (Blue star)
- Other (Yellow pentagon)

**2018-19 HS Boundary**

**HS DRAFT Option 5 Zones**

- Aycock (Light blue)
- Eastern Wayne (Light green)
- Goldsboro (Dark blue)
- Rosewood (Pink)
- Southern Wayne (Yellow)
- Spring Creek (Red)



Data Sources: Wayne County Public Schools; Wayne County, NC; ESRI  
Map Created: July 2019, ADM.